



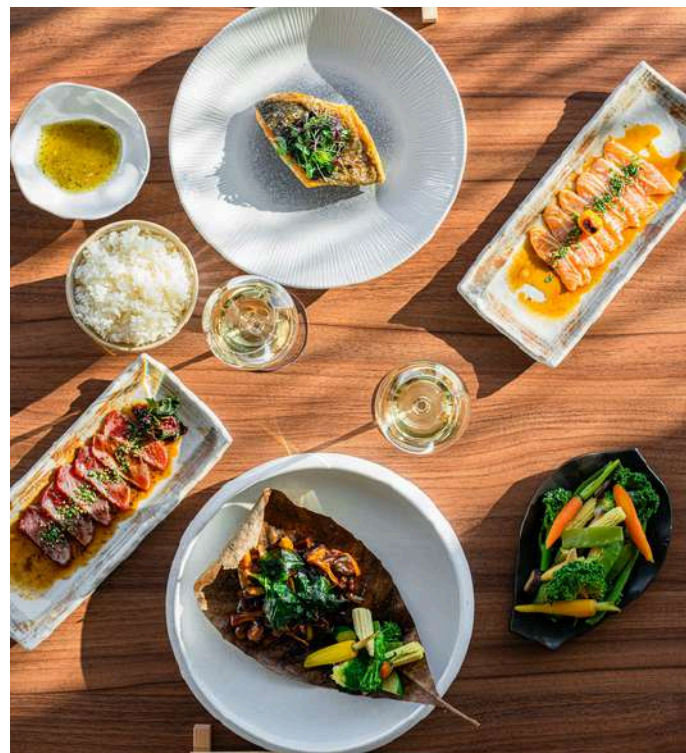
LARGE PARTIES

WELCOME TO SACHI

Discover SACHI, an elegant Japanese restaurant at Mandarin Oriental, Geneva, where traditional flavours meet contemporary sophistication. Helmed by Chef Mitsu, SACHI offers a refined culinary experience that showcases the very best of Japanese gastronomy.

SACHI is also the ideal destination for large parties and private events, with a variety of spaces to suit your occasion. Perfect for birthdays, corporate gatherings, or special occasions, SACHI combines impeccable service, exquisite cuisine, and a sophisticated ambiance to make every event truly memorable.

Please email mogva-sales@mohg.com or call +41 (0) 22 909 00 00 for more information and to book.





MAIN DINING ROOM

SACHI can accommodate up to 45 guests seated.

For group bookings and private events, we offer:

- Large communal tables in the main dining room accommodate group dining for up to 15 guests
- Exclusive hire of the entire restaurant for larger events

Please note that we do not offer partial or semi-private hire of the main dining room, aside from organising large group tables.



VERANDA AND TERRACE

A bright space with natural light streaming in, the veranda offers an intimate alternative to the main restaurant, while the terrace, a sunlit open-air area near the Rhône River, is available in summer – both are perfect for private lunches, dinners or celebrations.

- Veranda: seats up to 12 guests (up to 24 guests for full privatisation)
- Terrace: seats up to 14 guests
- Ideal for team meals, client hosting, or special occasions



OMAKASE

Nestled in the heart of the restaurant, our Omakase Bar offers an intimate and immersive dining experience - seats up to 10 guests.

- Chef's personalised tasting menus crafted from the freshest seasonal ingredients
- Perfect for food lovers seeking a unique and interactive meal
- Dedicated service with expert guidance throughout your culinary journey
- Ideal for private gatherings, special occasions, or intimate business meetings



GROUP MENUS

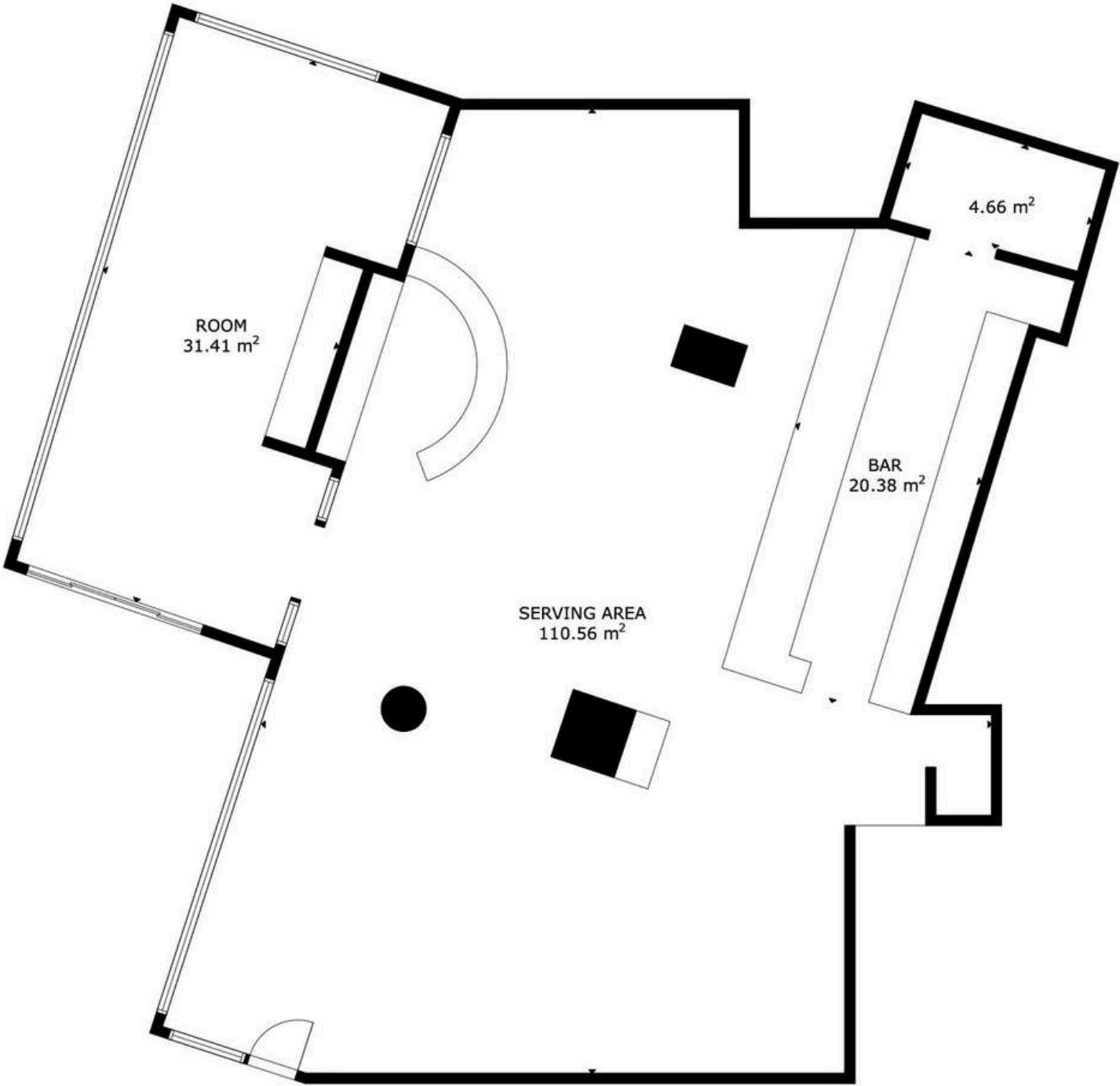
At SACHI, group dining offers an elevated culinary experience, showcasing meticulously crafted Japanese dishes that embody precision, balance, and artistry. Under the guidance of Chef Mitsu, a former disciple of the renowned master Nobu Matsuhisa, our thoughtfully curated menus take you on a journey through authentic flavours. Our group menus are available starting from 8 guests.

With attentive care, we accommodate dietary preferences given in advance, and tailor each dining experience to suit the nature of your event.





RESTAURANT FLOORPLAN



Total surface: 167.01 m²

Important : The areas and dimensions are approximate and may vary.
area calculated without walls.



Whether you're organising a business lunch, a team dinner, or a special celebration, allow us to craft an unforgettable experience for you and your guests.

Please contact us to enquire about availability, discover our bespoke menu offerings, and begin planning your event : mogva-sales@mohg.com

We look forward to welcoming you.

VIRTUAL TOUR

SACHI

Mandarin Oriental, Geneva
Quai Turrettini 1, 1201 Geneva
mogva-sales@mohg.com
+41 (0) 22 909 00 00
mandarinoriental.com

 [sachi.geneva](https://www.instagram.com/sachi.geneva)