

Plug in. Power up. Move on.

New 2-way socket outlet base with Wieland connector

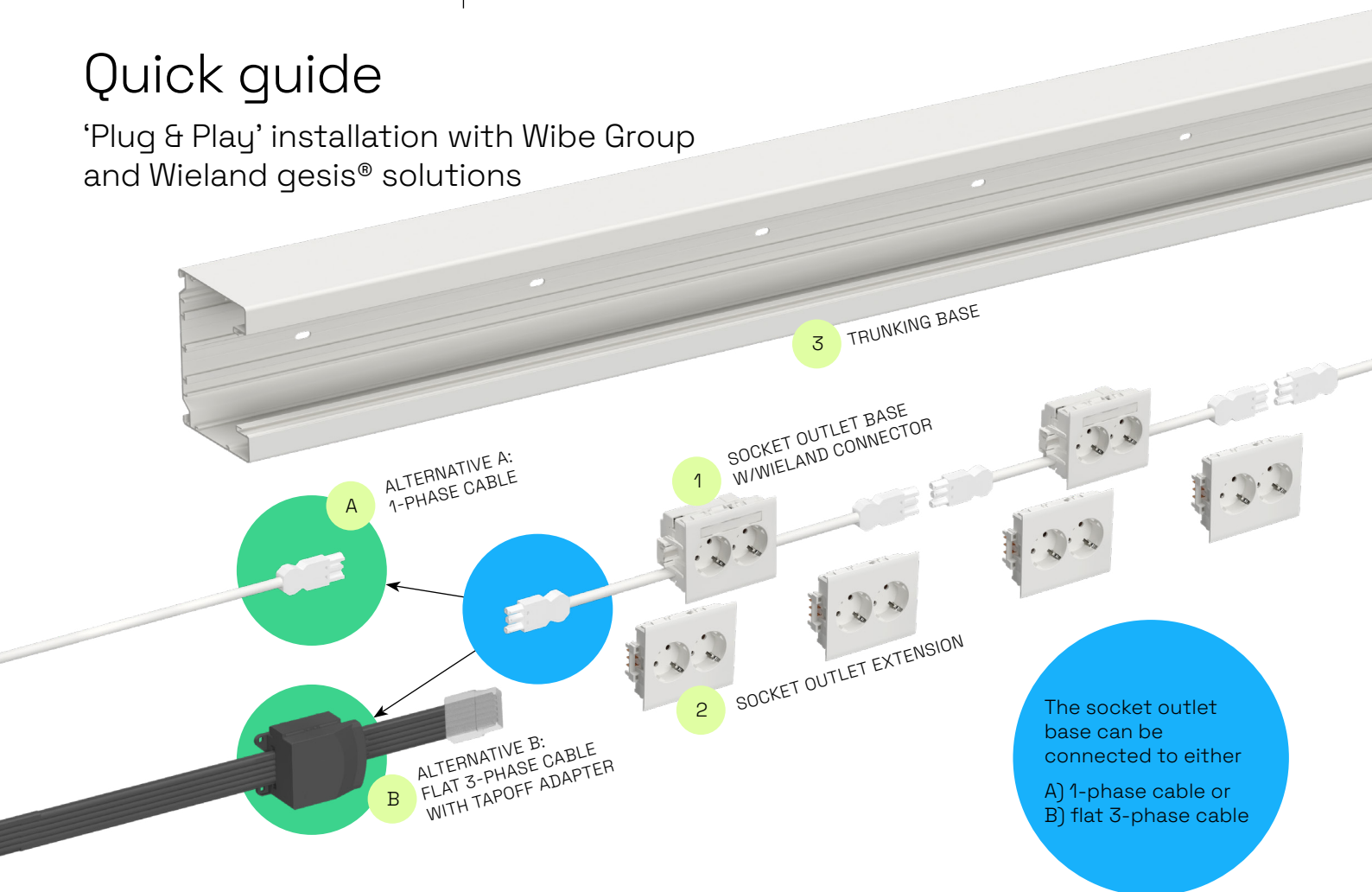
On busy construction sites, every second counts. The new Stago® 2-way base socket outlet with Wieland gesis® CLASSIC GST18 connector delivers speed, simplicity, and reliability when you need it most.

No cutting, stripping, or clamping needed. Just plug in, power up, and move on. It's the very essence of effortless and efficient installation, saving you precious time.

No need to worry about reliability either. With the new Stago 2-way base socket outlet with Wieland GST18 connector, quality comes prewired.

Quick guide

'Plug & Play' installation with Wibe Group
and Wieland gesis® solutions



Stago products

- | | |
|--|-----------------------------------|
| <p>1 STA501082 2-way socket outlet base with Wieland connector</p> <p>Front cover:</p> | <p>2 Socket outlet extension:</p> |
| | <p>3 Trunking base:</p> |

Wieland products

- | | |
|---|---|
| <p>A 1-phase GST18i3 3-pole Cable H05Z1Z1-F HF Cca</p> <p>92.238.5053.2 Cable Female/free 5m white
92.238.2050.2 Cable Male/female 2m white
92.238.3050.2 Cable Male/female 3m white
92.238.5050.2 Cable Male/female 5m white
05.587.3156.0 Locking clip GST18i3-i5 white</p> | <p>B Flat 3-phase cable</p> <p>00.770.0303.1 Flat cable 5x2,5mm² B2ca black
00.770.0304.1 Flat cable 5x4mm² B2ca black
92.050.1553.1 Input adapter flatcable NRG 5x2,5/5x4mm² black
92.031.5453.1 Tapoff adapter w/phase-selection, NRG to GST18i3
06.562.0653.0 Endcap flatcable 5x2,5/5x4mm²
05.569.7453.0 Cable clip flatcable NRG</p> |
|---|---|



Locking clip required in order to comply with IEC 61535