

UNIVERSAL CUT-IN BOX ADAPTER

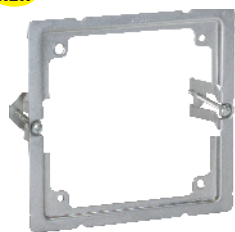
PRODUCT FEATURES

- ▶ Conveniently mount any 4" square steel junction box into old work applications
- ▶ Works with 4" square boxes of any depth
- ▶ Two integrated old work steel clips with screws
- ▶ For drywall or other wall materials
- ▶ Small footprint easily concealed by life safety devices greater than 4-7/8" W X 4-3/4" H
- ▶ Available in Red powder coat finish for FA circuits

Visit our website to download a wall mounting template

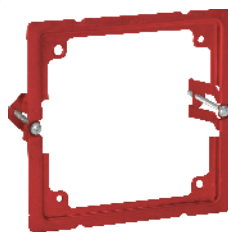
Cat. No.	Description	Std.Pkg.
UCIA-4S NEW	Cut-in adapter for 4" Square Boxes	20
FA-UCIA-4S NEW	Red Cut-in adapter for 4" Square Boxes	20

NEW



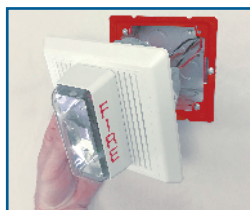
UCIA-4S

NEW



FA-UCIA-4S

Turn any 4" square box into an "Old Work" box!



FIRE ALARM

Small footprint easily concealed by life safety devices



PREFABRICATION

Prepare 4" boxes with UCIA-4S in the shop

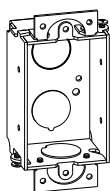
EXTRA SHALLOW GANGABLE SWITCH BOXES 1-1/2" DEEP

2" W x 3" H
7.5 Cu. In.

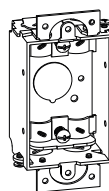
BX/MC CLAMP FEATURES

- ▶ All MC series boxes are suitable for use with MCI-A Type

Cat. No.	Description	Knockouts			Std. Pkg.
		Sides	Ends	Bottom	
GESB-1	Ears only	-	2 - 1/2"	2 - 1/2"	50
GESB-1-NM	With NM Cable Clamps	-	4 - Loom	1 - 1/2"	50



GESB-1

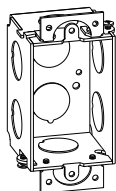


GESB-1-NM

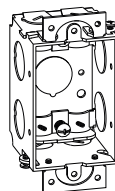
SHALLOW GANGABLE SWITCH BOXES 2" DEEP

2" W x 3" H
10.0 Cu. In.

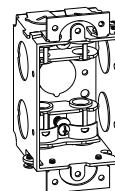
Cat. No.	Description	Knockouts			Std. Pkg.
		Sides	Ends	Bottom	
GSB-1	Ears only	4 - 1/2"	2 - 1/2"	2 - 1/2"	50
GSB-1-NM	With NM Cable Clamps	4 - 1/2"	4 - Loom	1 - 1/2"	50
GSB-1-MC	With BX/MC Cable Clamps	4 - 1/2"	4 - Loom	1 - 1/2"	50



GSB-1



GSB-1-NM



GSB-1-MC

- ▶ **600V** MKO's and CKO's suitable for bonding without any additional bonding means up to 600V
- ▶ *Acceptable for use in 2-hour rated walls (2-Gang only)
- ▶ Visit www.ul.com or QCIT Guide on page W1 for more information



*While Supplies Last