

Product data sheet

Specifications

SQUARE D



Load center, Homeline, 1 phase, 20 spaces, 40 circuits, 125A convertible main lugs, PoN, NEMA3R

HOM2040L125PRB

Product availability: Stock - Normally stocked in distribution facility

Main

Product Type	Load Center
Marketing Trade Name	Homeline
Load Center Type	PoN Convertible Mains (lugs)
Rated Current	125 A
Number of Spaces	20
Maximum Number of Single Pole Circuits	40
Enclosure Rating	NEMA 3R weatherproof enclosure
Cover Type	Surface cover
Electrical Connection	Lugs

Complementary

Max Short Circuit Current Rating	10 kA
Maximum Number of Tandem Breakers	20
Number of Phases	1 phase 3 wires
Voltage Rating	120/240 V AC
Wire Size	AWG 6...AWG 2/0 aluminium AWG 6...AWG 1/0 copper
Ground Bar	Grounding bar (ordered separately)
Busbar Material	Tin plated aluminium: busbar
Enclosure Material	Welded galvanized steel
Surface Finish	Baked enamel Gray
Box Number	4R
Bus Rated Current	125.0 A
Height	22.05 in (560 mm)
Width	14.8 in (375 mm)
Depth	4.5 in (115 mm)

Environment

Ambient Air Temperature for Operation	23 °F (-5 °C) 104 °F (40 °C)
Product Certifications	UL listed file E-6294

Price is "List Price" and may be subject to a trade discount – check with your local distributor or retailer for actual price.

Ordering and shipping details

Category	US1DE3C00145
Discount Schedule	DE3C
GTIN	785901847557
Returnability	Yes
Country of origin	US

Packing Units

Unit Type of Package 1	PCE
Nbr. of units in pkg.	1
Package 1 Height	5.10 in (12.954 cm)
Package 1 Width	15.50 in (39.370 cm)
Package 1 Length	24.00 in (60.960 cm)
Package weight(Lbs)	23.799 lb(US) (10.795 kg)
Unit Type of Package 2	PAL
Number of Units in Package 2	40
Package 2 Height	46.00 in (116.840 cm)
Package 2 Width	40.00 in (101.600 cm)
Package 2 Length	48.00 in (121.920 cm)
Package 2 Weight	981.999 lb(US) (445.427 kg)



Environmental Data

Schneider Electric aims to achieve Net Zero status by 2050 through supply chain partnerships, lower impact materials, and circularity via our ongoing “Use Better, Use Longer, Use Again” campaign to extend product lifetimes and recyclability.

[Environmental Data explained >](#)

[How we assess product sustainability >](#)

Environmental footprint

Carbon footprint (kg CO2 eq, Total Life cycle) 57

Environmental Disclosure [Product Environmental Profile](#)

Use Better

Materials and Substances

Packaging made with recycled cardboard No

Packaging without single use plastic No

EU RoHS Directive Under investigation

REACH Regulation [REACH Declaration](#)

California proposition 65 **WARNING:** This product can expose you to chemicals including: Lead and lead compounds, which is known to the State of California to cause cancer and birth defects or other reproductive harm. For more information go to www.P65Warnings.ca.gov

Use Again

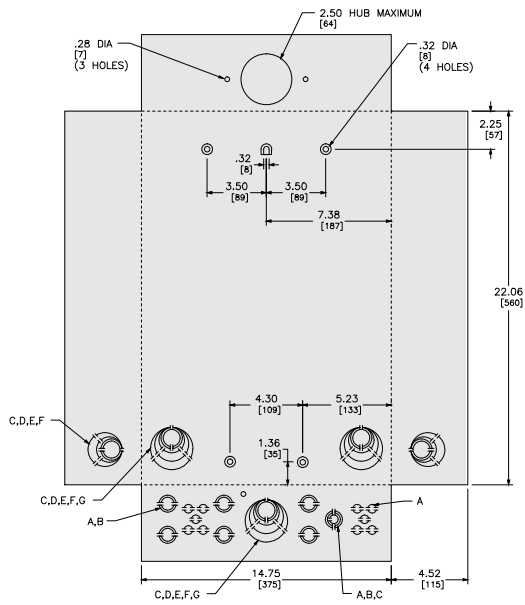
Repack and remanufacture

Circularity Profile No need of specific recycling operations

Take-back No

Technical Illustration

Dimensions



in.
[mm]

KNOCKOUTS							
SYMBOL	A	B	C	D	E	F	G
IN	.50	.75	1.00	1.25	1.50	2.00	2.50
MM	13	19	25	32	38	51	64

Dimensions are approximate. Refer to technical documentation for additional detail.

Technical Illustration

Wiring diagram

Image of product / Alternate images

Alternative

