

Product data sheet

Specifications

SQUARE D



All in one, Homeline, combination service entrance, ringed socket, 100A, surface, 10 spaces, 20 circuits, 10kA SSCR, OH, no bypass

SO1020M100S

Product availability: Stock - Normally stocked in distribution facility

Main

Product or Component Type	All-In-One
Range of Product	Homeline
Meter socket type	Ringed
Hub type	A

Complementary

Line Rated Current	100 A
Short-circuit current	10 kA
Mounting	Surface
Number of spaces	10
Number of circuits	20
Number of Tandem Breakers	10
Electrical connection	Lugs, line side Lugs, service ground
Wire Size	AWG 6...AWG 1 (aluminium/copper) line side AWG 8...AWG 4 (aluminium/copper) service ground
Tightening torque	Main lugs 50 lb.in, AWG 6...AWG 1, aluminium/copper Branch lugs 35 lb.in, AWG 6...AWG 4, aluminium/copper Branch lugs 25 lb.in, AWG 8, aluminium/copper Branch lugs 20 lb.in, AWG 14...AWG 10, aluminium/copper Branch lugs 20 lb.in, AWG 12...AWG 10, aluminium/copper Cover 10 lb.in
Disconnect	Service disconnect (factory installed)
Disconnect Rating	100 A
Branch Breaker Rating	80 A
Service feed location	OH
Bypass type	No bypass
Width	13.46 in (341.88 mm)
Depth	4.56 in (115.82 mm)
Height	20.79 in (528.07 mm)
Bus Rating	100.0 A

Environment

Price is "List Price" and may be subject to a trade discount – check with your local distributor or retailer for actual price.

NEMA Rating	NEMA 3R
Product Certifications	UL Listed

Ordering and shipping details

Category	US1DE3A00148
Discount Schedule	DE3A
GTIN	785901328049
Returnability	Yes
Country of origin	MX

Packing Units

Unit Type of Package 1	PCE
Nbr. of units in pkg.	1
Package 1 Height	5.300 in (13.462 cm)
Package 1 Width	13.700 in (34.798 cm)
Package 1 Length	21.800 in (55.372 cm)
Package weight(Lbs)	22.860 lb(US) (10.369 kg)
Unit Type of Package 2	PAL
Number of Units in Package 2	42
Package 2 Height	40.000 in (101.600 cm)
Package 2 Width	40.000 in (101.600 cm)
Package 2 Length	48.000 in (121.920 cm)
Package 2 Weight	963.000 lb(US) (436.809 kg)

Contractual warranty

Warranty	18 months
----------	-----------



Environmental Data

Schneider Electric aims to achieve Net Zero status by 2050 through supply chain partnerships, lower impact materials, and circularity via our ongoing “Use Better, Use Longer, Use Again” campaign to extend product lifetimes and recyclability.

[Environmental Data explained >](#)

[How we assess product sustainability >](#)

Environmental footprint

Carbon footprint (kg CO2 eq, Total Life cycle)	359
------------------------------------------------	-----

Environmental Disclosure	Product Environmental Profile
--------------------------	-----------------------------------------------

Use Better

Materials and Substances

Packaging made with recycled cardboard	No
----------------------------------------	----

Packaging without single use plastic	Yes
--------------------------------------	-----

EU RoHS Directive	Compliant with Exemptions
-----------------------------------	---------------------------

REACH Regulation	REACH Declaration
------------------	-----------------------------------

California proposition 65	WARNING: This product can expose you to chemicals including: Lead and lead compounds, which is known to the State of California to cause cancer and birth defects or other reproductive harm. For more information go to www.P65Warnings.ca.gov
---------------------------	----------------------------------------------------------------------------------------------------------------------------------------------------------------------------------------------------------------------------------------------------------------------------------------------------

Use Again

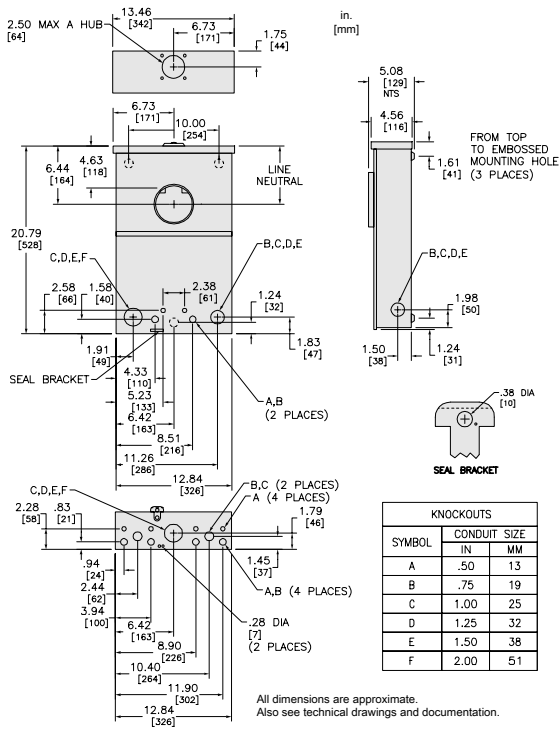
Repack and remanufacture

Circularity Profile	No need of specific recycling operations
---------------------	------------------------------------------

Take-back	No
-----------	----

Technical Illustration

Dimensions



Technical Illustration

Wiring diagram

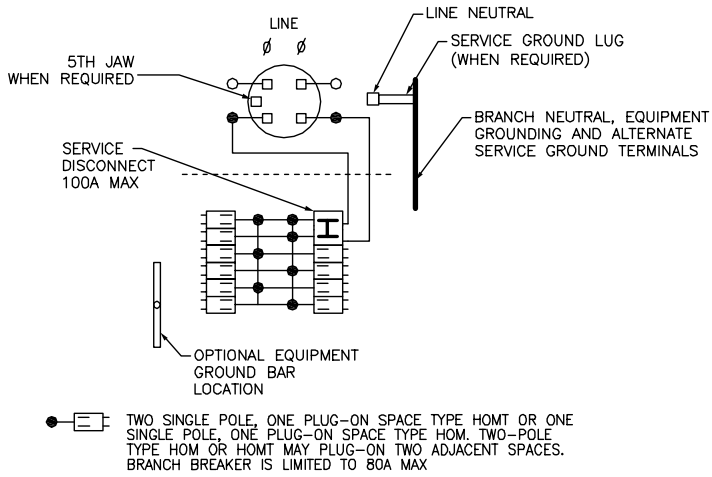


Image of product / Alternate images

Alternative

