

Product data sheet

Specifications



Load center interior, QO, mounting base, 3 phase, 42 spaces, 225A main lugs, OEM

QON342L225

Product availability: Stock - Normally stocked in distribution facility

Main

Product Type	Mounting base
Marketing Trade Name	QO
Load Center Type	Main lugs
Rated Current	225 A
Number of Spaces	42
Max Short Circuit Current Rating	10 kA
Number of Phases	3 phase 3 wires
Voltage Rating	120/240 V AC

Complementary

Wire Size	AWG 4...300 kcmil aluminium/copper
Product Certifications	CSA UL
Height	19.3 in (489 mm)
Width	8.0 in (202 mm)
Depth	3.03 in (77 mm)
Net Weight	3.999 lb(US) (1.814 kg)

Ordering and shipping details

Category	US1DE3A00909
Discount Schedule	DE3A
GTIN	785901868286
Returnability	Yes
Country of origin	US

Packing Units

Unit Type of Package 1	PCE
Nbr. of units in pkg.	1
Package 1 Height	4.300 in (10.922 cm)
Package 1 Width	12.800 in (32.512 cm)
Package 1 Length	20.900 in (53.086 cm)
Package weight(Lbs)	4.839 lb(US) (2.195 kg)

Price is "List Price" and may be subject to a trade discount – check with your local distributor or retailer for actual price.

Unit Type of Package 2	PAL
Number of Units in Package 2	64
Package 2 Height	40.000 in (101.600 cm)
Package 2 Width	36.000 in (91.440 cm)
Package 2 Length	48.000 in (121.920 cm)
Package 2 Weight	309.761 lb(US) (140.505 kg)

Contractual warranty

Warranty	18 months
-----------------	-----------



Environmental Data

Schneider Electric aims to achieve Net Zero status by 2050 through supply chain partnerships, lower impact materials, and circularity via our ongoing “Use Better, Use Longer, Use Again” campaign to extend product lifetimes and recyclability.

[Environmental Data explained >](#)

[How we assess product sustainability >](#)

Environmental footprint

[Environmental Disclosure](#)

[Product Environmental Profile](#)

Use Better

Materials and Substances

Packaging made with recycled cardboard

No

Packaging without single use plastic

No

[EU RoHS Directive](#)

Compliant

California proposition 65

WARNING: This product can expose you to chemicals including: Lead and lead compounds, which is known to the State of California to cause cancer and birth defects or other reproductive harm. For more information go to www.P65Warnings.ca.gov

Use Again

Repack and remanufacture


Circularity Profile

No need of specific recycling operations

Take-back

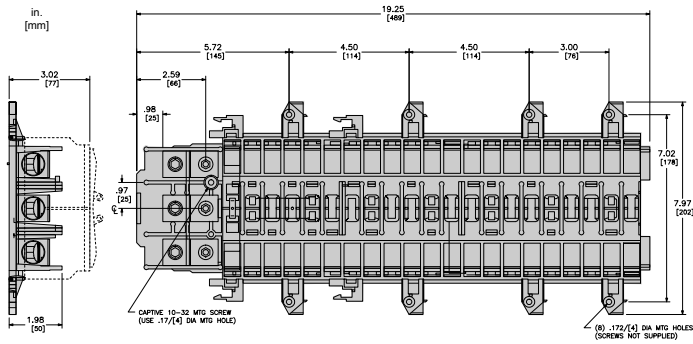
No

WEEE Label

 The product must be disposed on European Union markets following specific waste collection and never end up in rubbish bins.

Technical Illustration

Dimensions



ALL DIMENSIONS ARE APPROXIMATE.
ALSO REFER TO CAD, TECHNICAL DRAWINGS, AND TECHNICAL DOCUMENTATION.

Technical Illustration

Wiring diagram
