

Product data sheet

Specifications

SQUARE D



Manual Starter, fractional horsepower, 16A, 2 poles, 1 HP at 277 VAC, toggle operated, no indicator, NEMA 1 enclosure

2510FG2

Product availability: Stock - Normally stocked in distribution facility

Main

| | |
|---------------------|----------------------------|
| Product | Single Unit Manual Starter |
| Type | F |
| Overload Relay Type | Melting alloy |

Complementary

| | |
|-----------------------|---|
| Current Rating | 16 A |
| cable entry | 0.5" and 0.75" knock-outs (top and bottom) |
| Horsepower Rating | 1 hp 115 V AC 1 hp 277 V AC 0.75 hp 115 V DC 0.75 hp 230 V DC 2 hp 230 V AC |
| Voltage Rating | 277 V AC 230 V DC |
| Number of Poles | 2P |
| Control Unit | Toggle switch |
| Number of Phases | 1 phase |
| Pilot Light | No indicator |
| Reset | Manual |
| Motor starter type | Non reversing |
| Electrical Connection | Screw clamp terminals |
| Wire Gauge | AWG 14...AWG 12 copper |
| Height | 4.25 in (107.95 mm) |
| Width | 2.44 in (61.98 mm) |
| Depth | 2.75 in (69.85 mm) |
| Net Weight | 0.79 lb(US) (0.36 kg) |

Environment

| | |
|------------------------|---|
| Product Certifications | UL listed file E42243 CCN NLRV CSA LR25490 class 3211 05 |
| NEMA Enclosure Rating | NEMA 1 Plastic standard size |

Ordering and shipping details

| | |
|----------|--------------|
| Category | US10CP121101 |
|----------|--------------|

Price is "List Price" and may be subject to a trade discount – check with your local distributor or retailer for actual price.

| | |
|-------------------|--------------|
| Discount Schedule | 0CP1 |
| GTIN | 785901553953 |
| Returnability | Yes |
| Country of origin | MX |

Packing Units

| | |
|------------------------------|------------------------------|
| Unit Type of Package 1 | PCE |
| Nbr. of units in pkg. | 1 |
| Package 1 Height | 2.60 in (6.604 cm) |
| Package 1 Width | 3.00 in (7.62 cm) |
| Package 1 Length | 4.70 in (11.938 cm) |
| Package weight(Lbs) | 12.640 oz (358.338 g) |
| Unit Type of Package 2 | CAR |
| Number of Units in Package 2 | 14 |
| Package 2 Height | 8.90 in (22.606 cm) |
| Package 2 Width | 8.30 in (21.082 cm) |
| Package 2 Length | 14.50 in (36.83 cm) |
| Package 2 Weight | 11.680 lb(US) (5.298 kg) |
| Unit Type of Package 3 | PAL |
| Number of Units in Package 3 | 624 |
| Package 3 Height | 40.00 in (101.6 cm) |
| Package 3 Width | 40.00 in (101.6 cm) |
| Package 3 Length | 48.00 in (121.92 cm) |
| Package 3 Weight | 493.0003 lb(US) (223.621 kg) |

Contractual warranty

| | |
|----------|-----------|
| Warranty | 18 months |
|----------|-----------|


Environmental Data

Schneider Electric aims to achieve Net Zero status by 2050 through supply chain partnerships, lower impact materials, and circularity via our ongoing “Use Better, Use Longer, Use Again” campaign to extend product lifetimes and recyclability.

[Environmental Data explained >](#)

[How we assess product sustainability >](#)

Use Better

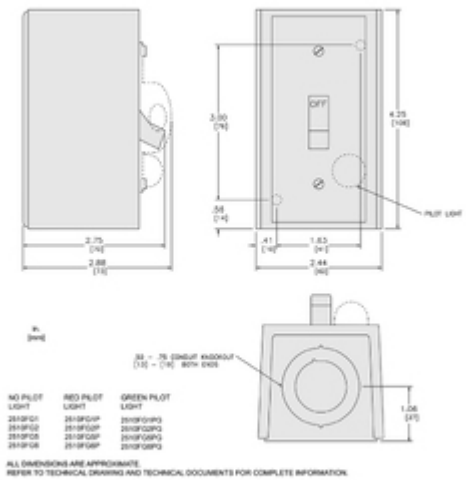
|  Materials and Substances | |
|---|--|
| Packaging made with recycled cardboard | No |
| Packaging without single use plastic | No |
| EU RoHS Directive | Not compliant |
| California proposition 65 | WARNING: This product can expose you to chemicals including: Lead and lead compounds, which is known to the State of California to cause cancer and birth defects or other reproductive harm. For more information go to www.P65Warnings.ca.gov |
| PVC free | Yes |

Use Again

|  Repack and remanufacture | |
|---|----|
| Take-back | No |

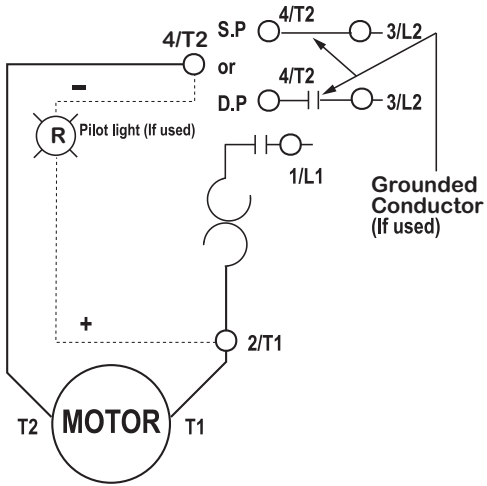
Technical Illustration

Dimensions



Technical Illustration

Wiring diagram



REFER TO INSTRUCTION SHEET AND
TECHNICAL DOCUMENTATION FOR COMPLETE INFORMATION