

# Product data sheet

Specifications

SQUARE D



Load center, QO, 1 phase, 42 spaces, 52 circuits, 200A convertible main breaker, PoN, NEMA1, Qwik-grip, value pack

QO142M200PQCVP

Product availability: Stock - Normally stocked in distribution facility

## Main

Marketing Trade Name	QO
Product Type	Load Center
Cover Type	Combination flush/surface cover
Provided Equipment	Circuit-breaker 3) 1P 20 A 120 V AC downstream Circuit-breaker 2) 2P 30 A 120/240 V AC downstream Load center 1) 42P 200 A 120/240 V AC Circuit-breaker 1) 125 A 120/240 V AC main supply ready assembled Qwik grip assembly kit 1)

## Complementary

Tightening Torque	Cover 20 lb.in
PoN Convertible Mains (lugs)	PoN Convertible Mains (breaker)
Rated Current	200 A
Number of Spaces	42
Max Short Circuit Current Rating	22 kA
Maximum Number of Single Pole Circuits	52
Maximum Number of Tandem Breakers	0
Number of Phases	1 phase
Voltage Rating	120/240 V AC
Wire Size	AWG 4...300 kcmil aluminium/copper
Ground Bar	Grounding bar (ordered separately)
Busbar Material	Copper: busbar
Enclosure Material	Welded sheet steel
Surface Finish	Baked enamel Gray
Box Number	11Q
Height	39.4 in (1000 mm)
Width	14.3 in (362 mm)
Depth	3.7 in (95 mm)

## Environment

Enclosure Rating	NEMA 1 indoor enclosure
Ambient Air Temperature for Operation	23 °F (-5 °C) 104 °F (40 °C)

Price is "List Price" and may be subject to a trade discount – check with your local distributor or retailer for actual price.

---

Product Certifications	UL Listed
------------------------	-----------

## Ordering and shipping details

---

Category	US1DE3A00184
----------	--------------

---

Discount Schedule	DE3A
-------------------	------

---

GTIN	785901634676
------	--------------

---

Returnability	Yes
---------------	-----

---

Country of origin	US
-------------------	----

## Packing Units

---

Unit Type of Package 1	PCE
------------------------	-----

---

Nbr. of units in pkg.	1
-----------------------	---

---

Package 1 Height	5.70 in (14.478 cm)
------------------	---------------------

---

Package 1 Width	16.30 in (41.402 cm)
-----------------	----------------------

---

Package 1 Length	40.70 in (103.378 cm)
------------------	-----------------------

---

Package weight(Lbs)	38.400 lb(US) (17.418 kg)
---------------------	---------------------------

---

Unit Type of Package 2	PAL
------------------------	-----

---

Number of Units in Package 2	18
------------------------------	----

---

Package 2 Height	38.00 in (96.520 cm)
------------------	----------------------

---

Package 2 Width	40.00 in (101.600 cm)
-----------------	-----------------------

---

Package 2 Length	48.00 in (121.920 cm)
------------------	-----------------------

---

Package 2 Weight	719.0008 lb(US) (326.133 kg)
------------------	------------------------------



## Environmental Data

Schneider Electric aims to achieve Net Zero status by 2050 through supply chain partnerships, lower impact materials, and circularity via our ongoing “Use Better, Use Longer, Use Again” campaign to extend product lifetimes and recyclability.

[Environmental Data explained >](#)

[How we assess product sustainability >](#)

### Environmental footprint

Carbon footprint (kg CO2 eq, Total Life cycle) 134

Environmental Disclosure [Product Environmental Profile](#)

## Use Better

### Materials and Substances

Packaging made with recycled cardboard No

Packaging without single use plastic No

[EU RoHS Directive](#) Compliant with Exemptions

REACH Regulation [REACH Declaration](#)

California proposition 65 **WARNING:** This product can expose you to chemicals including: Lead and lead compounds, which is known to the State of California to cause cancer and birth defects or other reproductive harm. For more information go to [www.P65Warnings.ca.gov](http://www.P65Warnings.ca.gov)

## Use Again

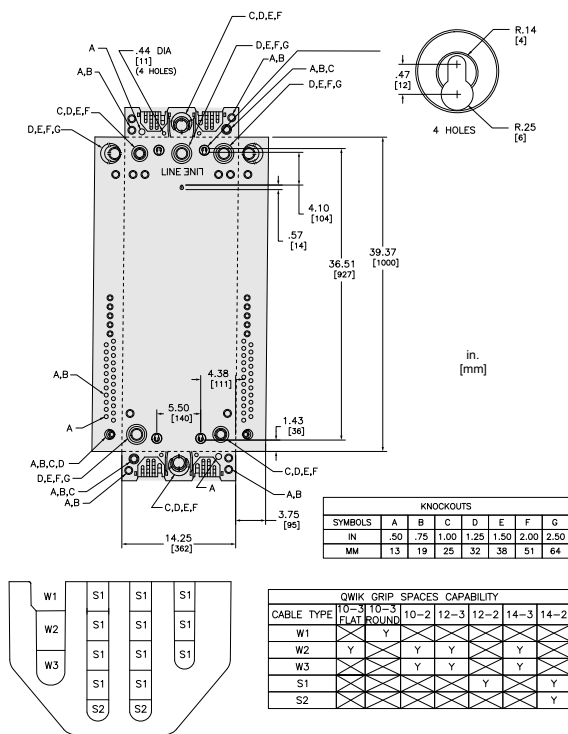
### Repack and remanufacture

Circularity Profile No need of specific recycling operations

Take-back No

Technical Illustration

Dimensions

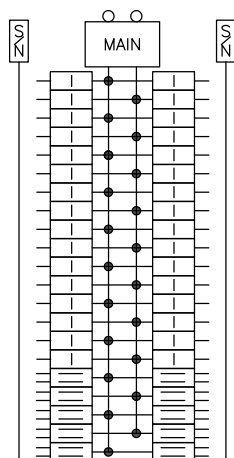


# Product data sheet      QO142M200PQCVP

Technical Illustration

Wiring diagram

---



QO142M200PQ  
QO142M200PQCVP