

Product data sheet

Specifications

SQUARE D



Tandem circuit breaker, Homeline, 2 x 1 pole at 15A, 1 x 2 pole at 50A, 120/240VAC, 10kA AIR, plug in, UL

HOMT1515250

Product availability: Stock - Normally stocked in distribution facility

Main

Product	Miniature circuit-breaker
Range	Homeline
Current Rating	15 A 50 A
Certifications	UL Listed
Voltage Rating	120/240 V AC
Mounting Type	Plug-in
Number of Poles	1P 2P
Short Circuit Current Rating	10 kA
Number of Spaces	2
Circuit Breaker Type	Quad tandem
Ratings	HACR rated
Electrical Connection	Box lugs
Wire Size	1 x AWG 14...AWG 6 (copper) 1 x AWG 12...AWG 6 (aluminium) 1 x AWG 12...AWG 8 (aluminium)

Complementary

Tightening torque	40.7 lbf.in (4.6 N.m) 0.004...0.02 in ² (2.5...10 mm ²) (AWG 14...AWG 6) 40.7 lbf.in (4.6 N.m) 0.004...0.03 in ² (2.5...20 mm ²) (AWG 14...AWG 2)
Height	3.13 in (79.50 mm)
Width	2 in (50.8 mm)
Depth	2.98 in (75.69 mm)

Environment

Ambient Air Temperature for Operation	104 °F (40 °C)
---------------------------------------	----------------

Ordering and shipping details

Category	US1DE3D00046
Discount Schedule	DE3D
GTIN	785901377030
Returnability	Yes

Price is "List Price" and may be subject to a trade discount – check with your local distributor or retailer for actual price.

Country of origin	MX
-------------------	----

Packing Units

Unit Type of Package 1	PCE
------------------------	-----

Nbr. of units in pkg.	1
-----------------------	---

Package 1 Height	2.00 in (5.08 cm)
------------------	-------------------

Package 1 Width	3.00 in (7.62 cm)
-----------------	-------------------

Package 1 Length	3.20 in (8.128 cm)
------------------	--------------------

Package weight(Lbs)	13.600 oz (385.554 g)
---------------------	-----------------------

Contractual warranty

Warranty	Lifetime
----------	----------

Environmental Data

Schneider Electric aims to achieve Net Zero status by 2050 through supply chain partnerships, lower impact materials, and circularity via our ongoing **Use Better, Use Longer, Use Again**™ campaign to extend product lifetimes and recyclability.

[Environmental Data explained >](#)

[How we assess product sustainability >](#)

Environmental footprint

Carbon footprint (kg CO2 eq, Total Life cycle)	24
--	----

Use Better

Materials and Substances

Packaging made with recycled cardboard	Yes
--	-----

Packaging without single use plastic	Yes
--------------------------------------	-----

EU RoHS Directive	Compliant
-----------------------------------	-----------

REACH Regulation	REACH Declaration
------------------	-----------------------------------

Use Again

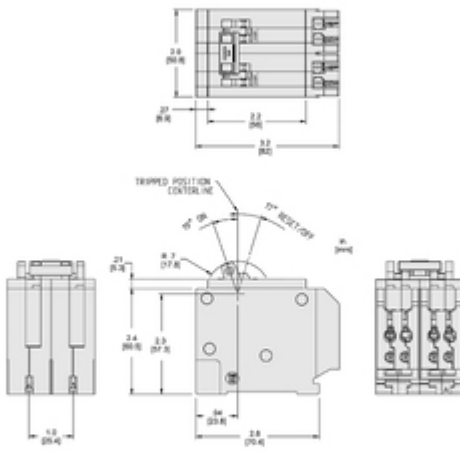
Repack and remanufacture

Circularity Profile	No need of specific recycling operations
---------------------	--

Take-back	No
-----------	----

Technical Illustration

Dimensions



HOMT Quad Tripless Circuit Breaker Two spaces required.
All dimensions are approximate. Also see technical documentation.

Image of product / Alternate images

Alternative

Technical Benefits
Tandem Circuit Breaker



Easy plug on design
with SE Homeline
Loadcenters



Protects against
overloads and
short-circuits



Homeline tandem circuit
breaker with dual single
pole's at 20 amps and a
double pole at 50 amps



The current capacity
that this circuit breaker
is able to interrupt
before breaking is 10kA



For residential/
commercial use to
protect entire branch
circuits



Compatible with
Homeline electrical
panel and CSEDs with 2
spaces