

Product data sheet

Specifications

SQUARE D



Manual Starter, fractional horsepower, 16A, 1 pole, 1 HP at 277 VAC, toggle operated, no indicator, open style

2510FO1

Product availability: Stock - Normally stocked in distribution facility

Main

Product	Single Unit Manual Starter
Type	F
Overload Relay Type	Melting alloy

Complementary

Current Rating	16 A
cable entry	Without
Horsepower Rating	1 hp 115 V AC 1 hp 230 V AC 1 hp 277 V AC
Voltage Rating	277 V AC
Number of Poles	1P
Control Unit	Toggle switch
Number of Phases	1 phase
Pilot Light	No indicator
Reset	Manual
Motor starter type	Non reversing
Electrical Connection	Screw clamp terminals
Wire Gauge	AWG 14...AWG 12 copper
Height	4.13 in (104.90 mm)
Width	1.69 in (42.93 mm)
Depth	2.22 in (56.39 mm)
Net Weight	0.33 lb(US) (0.15 kg)

Environment

Product Certifications	UL recognized E42243 CCN NLRV2 CSA LR25490 class 3211 05
NEMA Enclosure Rating	Not rated (open device)

Ordering and shipping details

Category	US10CP121101
Discount Schedule	0CP1

Price is "List Price" and may be subject to a trade discount – check with your local distributor or retailer for actual price.

GTIN	785901554134
Returnability	Yes
Country of origin	MX

Packing Units

Unit Type of Package 1	PCE
Nbr. of units in pkg.	1
Package 1 Height	1.89 in (4.8 cm)
Package 1 Width	2.91 in (7.4 cm)
Package 1 Length	4.69 in (11.9 cm)
Package weight(Lbs)	5.0 oz (140.6 g)
Unit Type of Package 2	PAL
Number of Units in Package 2	624
Package 2 Height	40.00 in (101.6 cm)
Package 2 Width	40.00 in (101.6 cm)
Package 2 Length	48.00 in (121.92 cm)
Package 2 Weight	199.679 lb(US) (90.573 kg)

Contractual warranty

Warranty	18 months
-----------------	-----------


Environmental Data

Schneider Electric aims to achieve Net Zero status by 2050 through supply chain partnerships, lower impact materials, and circularity via our ongoing “Use Better, Use Longer, Use Again” campaign to extend product lifetimes and recyclability.


[Environmental Data explained >](#)

[How we assess product sustainability >](#)

Use Better

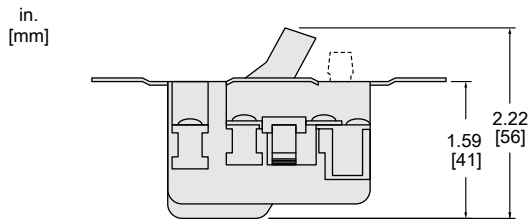
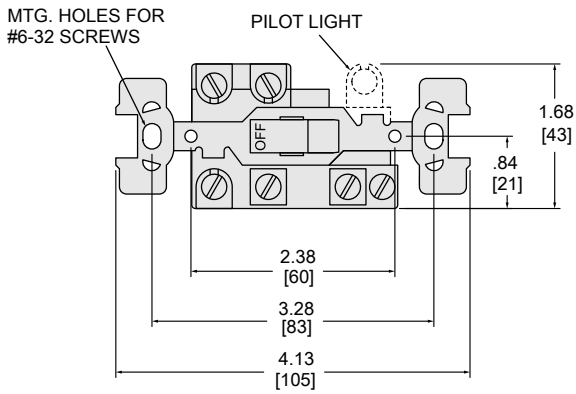
 Materials and Substances	
Packaging made with recycled cardboard	No
Packaging without single use plastic	No
EU RoHS Directive	Not compliant
California proposition 65	WARNING: This product can expose you to chemicals including: Lead and lead compounds, which is known to the State of California to cause cancer and birth defects or other reproductive harm. For more information go to www.P65Warnings.ca.gov
PVC free	Yes

Use Again

 Repack and remanufacture	
Take-back	No

Technical Illustration

Dimensions

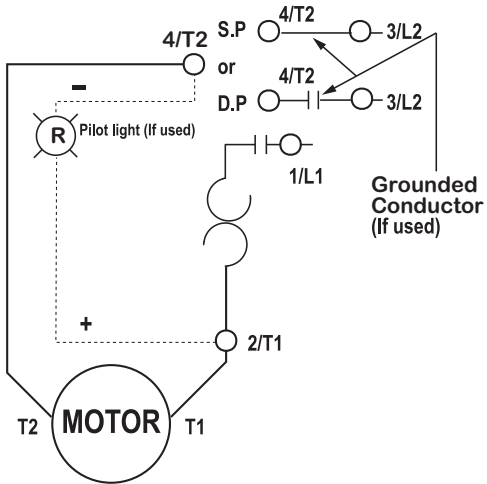


All dimensions are approximate.
Also see technical drawings and/or documentation.

TI_DIM_2510FO

Technical Illustration

Wiring diagram



REFER TO INSTRUCTION SHEET AND
TECHNICAL DOCUMENTATION FOR COMPLETE INFORMATION