

Product data sheet

Specifications

SQUARE D



Load center, Homeline, 1 phase, 40 spaces, 80 circuits, 200A convertible main breaker, PoN, NEMA1, Qwik-grip

HOM4080M200PQC

Product availability: Stock - Normally stocked in distribution facility

Main

Product Type	Load Center
Marketing Trade Name	Homeline
Load Center Type	PoN Convertible Mains (breaker)
Rated Current	200 A
Number of Spaces	40
Maximum Number of Single Pole Circuits	80
Enclosure Rating	NEMA 1 indoor enclosure
Cover Type	Combination flush/surface cover
Provided Equipment	Qwik grip assembly kit 1)

Complementary

Max Short Circuit Current Rating	22 kA
Maximum Number of Tandem Breakers	40
Number of Phases	1 phase 3 wires
Voltage Rating	120/240 V AC
Wire Size	AWG 4...250 kcmil aluminium/copper
Ground Bar	Grounding bar (ordered separately)
Enclosure Material	Welded galvanized steel
Surface Finish	Baked enamel Gray
Box Number	12Q
Bus Rated Current	225.0 A
Height	39.4 in (1000 mm)
Width	14.3 in (362 mm)
Depth	3.7 in (95 mm)

Environment

Ambient Air Temperature for Operation	23 °F (-5 °C) 104 °F (40 °C)
---------------------------------------	---------------------------------

Ordering and shipping details

Category	US1DE3C00045
----------	--------------

Price is "List Price" and may be subject to a trade discount – check with your local distributor or retailer for actual price.

Discount Schedule	DE3C
GTIN	785901622239
Returnability	Yes
Country of origin	US

Packing Units

Unit Type of Package 1	PCE
Nbr. of units in pkg.	1
Package 1 Height	5.70 in (14.478 cm)
Package 1 Width	16.00 in (40.640 cm)
Package 1 Length	42.00 in (106.680 cm)
Package weight(Lbs)	37.809 lb(US) (17.150 kg)
Unit Type of Package 2	PAL
Number of Units in Package 2	18
Package 2 Height	36.50 in (92.710 cm)
Package 2 Width	40.00 in (101.600 cm)
Package 2 Length	48.00 in (121.920 cm)
Package 2 Weight	721.999 lb(US) (327.493 kg)

Environmental Data

Schneider Electric aims to achieve Net Zero status by 2050 through supply chain partnerships, lower impact materials, and circularity via our ongoing "Use Better, Use Longer, Use Again" campaign to extend product lifetimes and recyclability.

[Environmental Data explained >](#)

[How we assess product sustainability >](#)

Environmental footprint

Carbon footprint (kg CO2 eq, Total Life cycle) 90

Environmental Disclosure [Product Environmental Profile](#)

Use Better

Materials and Substances

Packaging made with recycled cardboard No

Packaging without single use plastic No

EU RoHS Directive Under investigation

REACH Regulation [REACH Declaration](#)

California proposition 65
WARNING: This product can expose you to chemicals including: Lead and lead compounds, which is known to the State of California to cause cancer and birth defects or other reproductive harm. For more information go to www.P65Warnings.ca.gov

Use Again

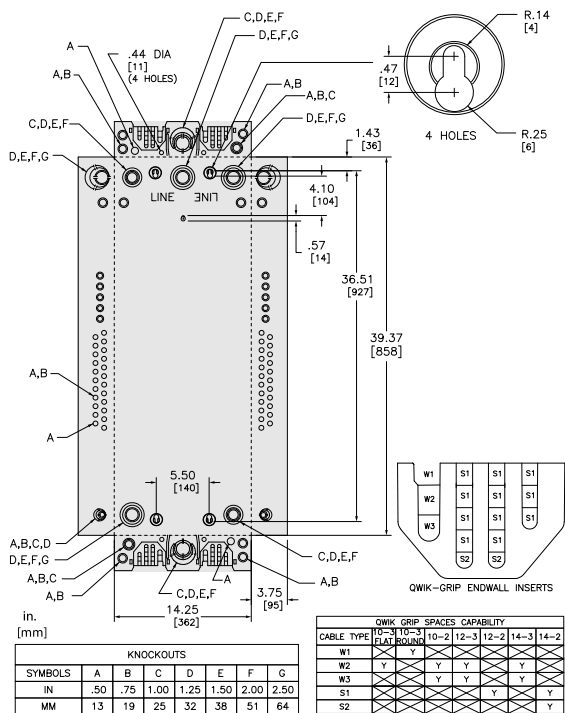
Repack and remanufacture

Circularity Profile No need of specific recycling operations

Take-back No

Technical Illustration

Dimensions



Dimensions are approximate. Refer to technical documentation for additional detail.

Technical Illustration

Wiring diagram

Image of product / Alternate images

Alternative

