

# Product data sheet

Specifications



## voltage control relay, Harmony Control Relays, 5A, 1CO, 65...260V AC DC

RM17UAS15

### Main

Range of product	Harmony Control Relays
Relay type	Voltage control relay
Product or component type	Voltage control relay
Product specific application	For single-phase and DC supply
Relay name	RM17UAS
Relay monitored parameters	Overvoltage or undervoltage detection
time delay	Adjustable 0.1...10 s, 0 + 10 % Tt- time delay upon fault
Switching capacity in VA	1250 VA
Measurement range	65...260 V AC/DC
Contacts type and composition	1 C/O

### Complementary

Reset time	1500 ms time delay
Maximum switching voltage	250 V AC/DC
Minimum switching current	10 mA at 5 V DC
Maximum switching current	5 A AC/DC
Supply voltage limits	50...270 V AC/DC
Power consumption in VA	0...3 VA AC
Maximum power consumption in W	1 W DC
Control circuit frequency	50...60 Hz +/- 10 %
Immunity to microbreaks	20 ms
Output contacts	1 C/O
nominal output current	5 A
Hysteresis	5...20 % of threshold setting
Measurement accuracy	+/- 10 % of the full scale value
Polarity	Non reversible polarity on DC supply
delay at power up	1000 ms DC 500 ms AC
Maximum measuring cycle	150 ms measurement cycle as true rms value
Repeat accuracy	+/- 0.5 % for input and measurement circuit +/- 1 % for time delay

<b>Measurement error</b>	< 1 % over the whole range with voltage variation 0.2 %/°C with temperature variation
<b>Quality labels</b>	CE
<b>Insulation resistance</b>	> 500 MOhm at 500 V DC conforming to IEC 60255-5 > 500 MOhm at 500 V DC conforming to IEC 60664-1
<b>Operating position</b>	Any position without derating
<b>Local signalling</b>	LED (green) for power ON LED (yellow) for relay ON
<b>Overvoltage category</b>	III conforming to IEC 60664-1
<b>[U<sub>i</sub>] rated insulation voltage</b>	250 V conforming to IEC 60664-1 400 V conforming to IEC 60664-1
<b>Connections - terminals</b>	Screw terminals, 1 x 0.5...1 x 4 mm <sup>2</sup> (AWG 20...AWG 11) solid without cable end Screw terminals, 2 x 0.5...2 x 2.5 mm <sup>2</sup> (AWG 20...AWG 14) solid without cable end Screw terminals, 1 x 0.2...2 x 2.5 mm <sup>2</sup> (AWG 24...AWG 12) flexible with cable end Screw terminals, 2 x 0.2...2 x 1.5 mm <sup>2</sup> (AWG 24...AWG 16) flexible with cable end
<b>Tightening torque</b>	0.6...1 N.m conforming to IEC 60947-1
<b>Housing material</b>	Self-extinguishing plastic
<b>Mounting support</b>	35 mm symmetrical DIN rail conforming to IEC 60715
<b>Electrical durability</b>	100000 cycles
<b>Mechanical durability</b>	30000000 cycles
<b>Operating rate</b>	<= 360 operations/hour full load
<b>Utilisation category</b>	AC-12 conforming to IEC 60947-5-1 AC-13 conforming to IEC 60947-5-1 AC-14 conforming to IEC 60947-5-1 AC-15 conforming to IEC 60947-5-1 DC-12 conforming to IEC 60947-5-1 DC-13 conforming to IEC 60947-5-1 DC-14 conforming to IEC 60947-5-1
<b>[Un] rated nominal voltage</b>	, self-powered
<b>Control type</b>	Without test button
<b>Width</b>	17.5 mm
<b>Net weight</b>	0.08 kg

## Environment

<b>Electromagnetic compatibility</b>	Emission standard for industrial environments conforming to IEC 61000-6-4 Emission standard for residential, commercial and light-industrial environments conforming to IEC 61000-6-3 Immunity for industrial environments conforming to NF EN/IEC 61000-6-2
<b>Ambient air temperature for operation</b>	-20...50 °C
<b>Vibration resistance</b>	0.35 mm (f= 5...57.6 Hz) conforming to IEC 60068-2-6 1 gn (f= 57.6...150 Hz) conforming to IEC 60255-21-1
<b>Shock resistance</b>	5 gn conforming to IEC 60068-2-27
<b>Standards</b>	IEC 60255-6
<b>Product certifications</b>	GL UL GOST CSA C-Tick
<b>Ambient air temperature for storage</b>	-40...70 °C
<b>Relative humidity</b>	95 % at 55 °C conforming to IEC 60068-2-30

<b>IP degree of protection</b>	IP20 (terminals) conforming to IEC 60529 IP30 (casing) conforming to IEC 60529
<b>Pollution degree</b>	3 conforming to IEC 60664-1
<b>Directives</b>	89/336/EEC - electromagnetic compatibility 73/23/EEC - low voltage directive
<b>Dielectric test voltage</b>	2 kV, 1 min AC 50 Hz conforming to IEC 60255-5 2 kV, 1 min AC 50 Hz conforming to IEC 60664-1
<b>Non-dissipating shock wave</b>	4 kV conforming to IEC 60255-5 4 kV conforming to IEC 60664-1 4 kV conforming to IEC 61000-4-5

## Packing Units

<b>Unit Type of Package 1</b>	PCE
<b>Number of Units in Package 1</b>	1
<b>Package 1 Height</b>	2.500 cm
<b>Package 1 Width</b>	7.800 cm
<b>Package 1 Length</b>	10.000 cm
<b>Package 1 Weight</b>	81.000 g
<b>Unit Type of Package 2</b>	S02
<b>Number of Units in Package 2</b>	48
<b>Package 2 Height</b>	15.000 cm
<b>Package 2 Width</b>	30.000 cm
<b>Package 2 Length</b>	40.000 cm
<b>Package 2 Weight</b>	4.809 kg

## Contractual warranty

<b>Warranty</b>	18 months
-----------------	-----------



## Environmental Data

Schneider Electric aims to achieve Net Zero status by 2050 through supply chain partnerships, lower impact materials, and circularity via our ongoing “Use Better, Use Longer, Use Again” campaign to extend product lifetimes and recyclability.

[Environmental Data explained >](#)

[How we assess product sustainability >](#)

### Environmental footprint

Total lifecycle Carbon footprint	38
----------------------------------	----

## Use Better

### Materials and Substances

Packaging made with recycled cardboard	Yes
--	-----

Packaging without single use plastic	Yes
--------------------------------------	-----

<a href="#">EU RoHS Directive</a>	Pro-active compliance (Product out of EU RoHS legal scope)
-----------------------------------	--

SCIP Number	5e3fdf99-611b-4d07-ad17-6eba84ab488b
-------------	--------------------------------------

REACH Regulation	<a href="#">REACH Declaration</a>
------------------	-----------------------------------

California proposition 65	<b>WARNING:</b> This product can expose you to chemicals including: Lead and lead compounds, which is known to the State of California to cause cancer and birth defects or other reproductive harm. For more information go to <a href="http://www.P65Warnings.ca.gov">www.P65Warnings.ca.gov</a>
---------------------------	--

## Use Again

### Repack and remanufacture

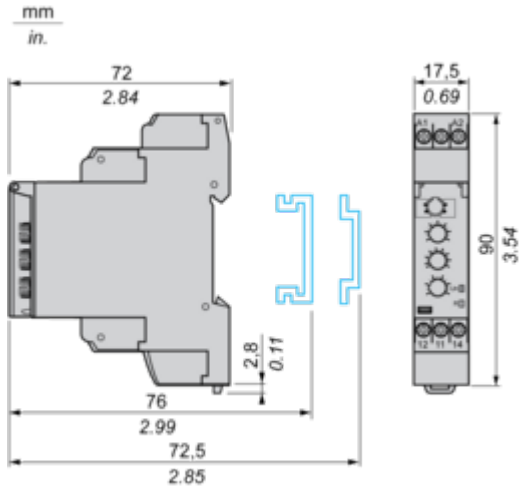
Take-back	No
-----------	----

Dimensions Drawings

Single-Phase and DC Voltage Control Relays

---

Dimensions and Mounting

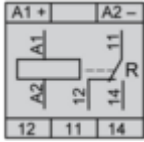


Connections and Schema

Single-Phase and DC Voltage Control Relays

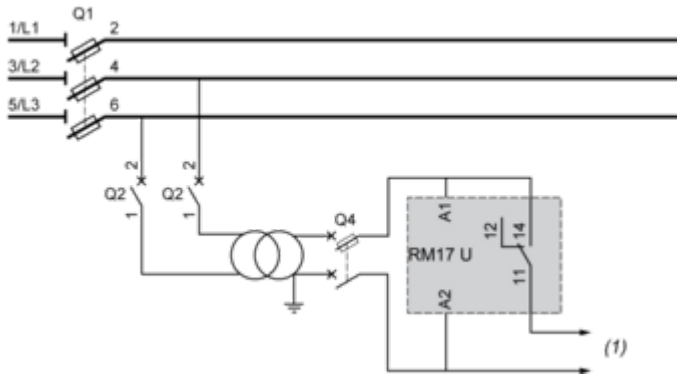
---

Wiring Diagram



Application Scheme

---



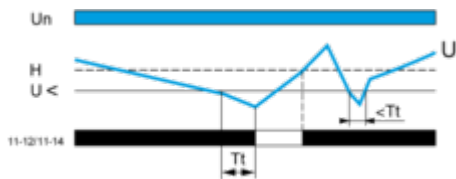
(1) To sensitive loads

Technical Description

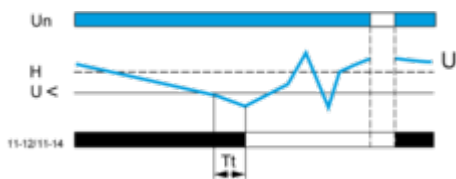
Function Diagrams

Undervoltage Control

Without memory ("No Memory" mode)

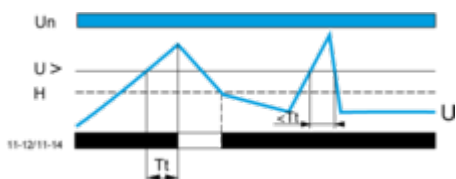


With memory ("Memory" mode)

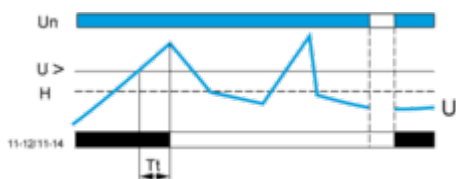


Overvoltage Control

Without memory ("No Memory" mode)



With memory ("Memory" mode)



Legend

- Tt Time delay after crossing of threshold
- Un Nominal supply voltage
- U Monitored supply voltage
- H Hysteresis
- U> Overvoltage threshold
- U< Undervoltage threshold
- 11-12, 11-14 Output relay connections (refer to Connections and Schema)
- Relay status: black color = energized.

**NOTE:** In "Memory" mode, the relay opens when crossing of the threshold is detected and then stays in that position. The power supply voltage must be switched off to reset the product.

Technical Illustration

Dimensions

---

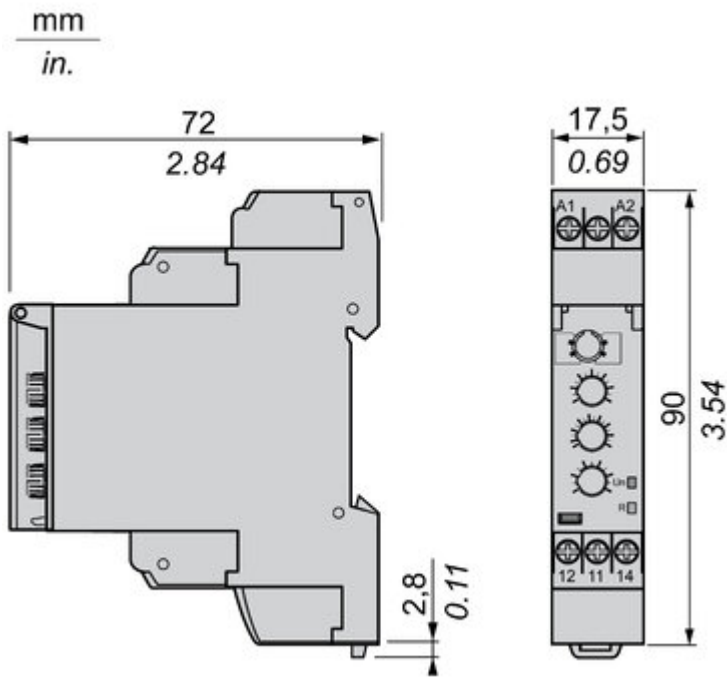
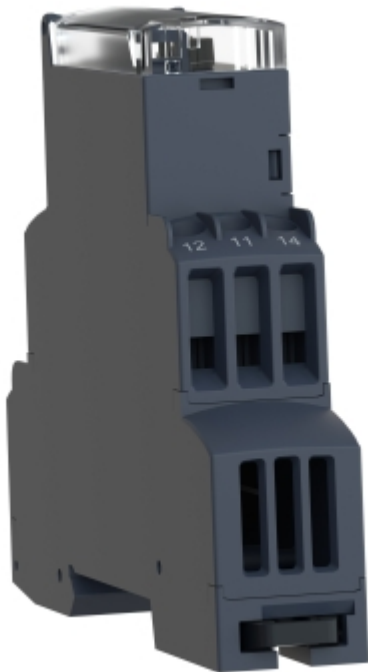
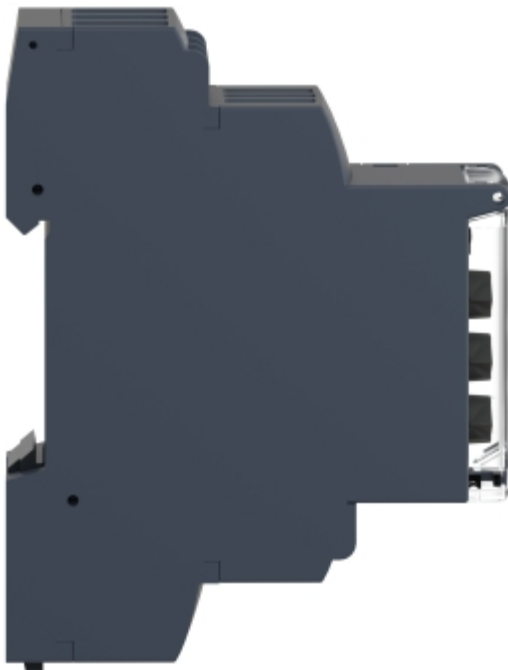


Image of product / Alternate images

Alternative

---





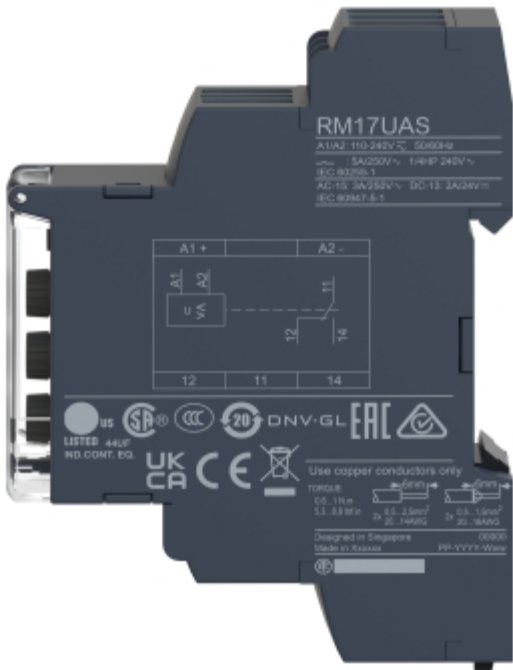
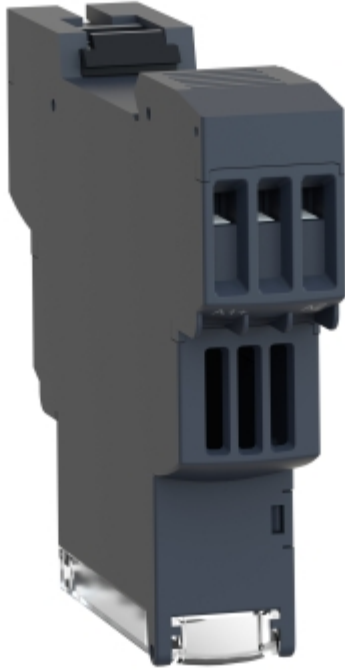


Image of product in real life situation

