

Product data sheet

Specifications

SQUARE D



Meter mains, QO, CSED, ringless socket, 400A, surface mount, maximum 8 spaces, 16 circuits, Class 320 with lever bypass

QC816D400SL

Product availability: Non-Stock - Not normally stocked in distribution facility

Main

Product or Component Type	Meter Mains
Range of Product	QO
Includes	Circuit-breaker 1) 200 A 240 V AC

Complementary

Line Rated Current	400 A
Meter socket type	Ringless
Mounting	Surface
Number of spaces	8
Number of circuits	16
Wire Size	AWG 4...600 kcmil 1 aluminium/copper AWG 1/0...350 kcmil 2 aluminium/copper
Disconnect	Service disconnect (ordered separately)
Service feed location	OH UG
Bypass type	Class 320 Lever bypass
Height	32.7 in (830 mm)
Width	28.3 in (718 mm)
Depth	7.9 in (201 mm)
Bus Rating	200.0 A

Environment

NEMA Degree of Protection	NEMA 3R
Product certifications	UL listed file E-6294

Ordering and shipping details

Category	US1DE3A00022
Discount Schedule	DE3A
GTIN	785901127284
Returnability	Yes
Country of origin	MX

Price is "List Price" and may be subject to a trade discount – check with your local distributor or retailer for actual price.

Packing Units

Unit Type of Package 1	PCE
Nbr. of units in pkg.	1
Package 1 Height	7.90 in (20.066 cm)
Package 1 Width	28.30 in (71.882 cm)
Package 1 Length	30.70 in (77.978 cm)
Package weight(Lbs)	77.0009 lb(US) (34.927 kg)
Unit Type of Package 2	PAL
Number of Units in Package 2	5
Package 2 Height	43.00 in (109.22 cm)
Package 2 Width	40.00 in (101.6 cm)
Package 2 Length	48.00 in (121.92 cm)
Package 2 Weight	420.38 lb(US) (190.68 kg)



Environmental Data

Schneider Electric aims to achieve Net Zero status by 2050 through supply chain partnerships, lower impact materials, and circularity via our ongoing “Use Better, Use Longer, Use Again” campaign to extend product lifetimes and recyclability.

[Environmental Data explained >](#)

[How we assess product sustainability >](#)

Environmental footprint

Carbon footprint (kg CO2 eq, Total Life cycle) 466

Environmental Disclosure [Product Environmental Profile](#)

Use Better

Materials and Substances

Packaging made with recycled cardboard No

Packaging without single use plastic No

[EU RoHS Directive](#) Compliant with Exemptions

REACH Regulation [REACH Declaration](#)

California proposition 65 **WARNING:** This product can expose you to chemicals including: Lead and lead compounds, which is known to the State of California to cause cancer and birth defects or other reproductive harm. For more information go to www.P65Warnings.ca.gov

Use Again

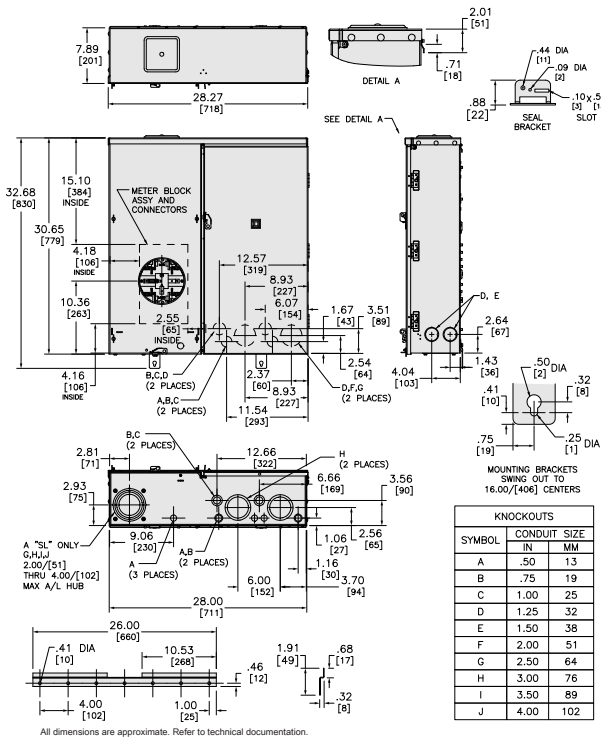
Repack and remanufacture

Circularity Profile No need of specific recycling operations

Take-back No

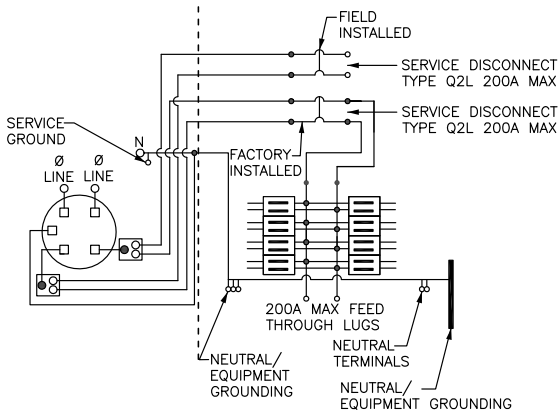
Technical Illustration

Dimensions



Technical Illustration

Wiring diagram



TWO SINGLE POLE, ONE PLUG-ON SPACE TYPE QOT OR ONE SINGLE POLE TYPE QO.
 TWO POLE TYPE QO, QOA, OR QOC (125 MAX) MAY PLUG-ON TWO ADJACENT SPACES.
 TWO POLE TYPE QOC (150-200A MAX) MAY PLUG-ON FOUR ADJACENT SPACES, ON RIGHT SIDE ONLY.