



U.S. Tsubaki Power Transmission, LLC

301 E. Marquardt Dr.

Wheeling, IL 60090

Phone: 847.459.9500 or 800.323.7790

Fax: 847.459.9515

Email: sales@ustsubaki.com

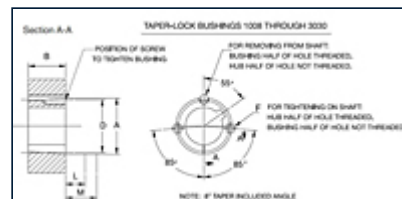
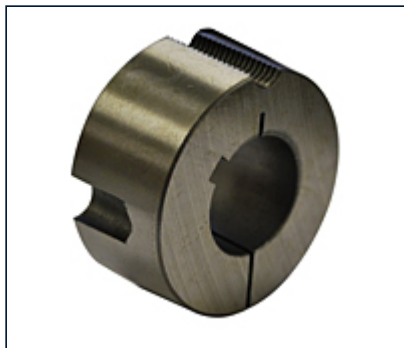
Website: www.ustsubaki.com

[All Categories](#) > [Sprockets](#) > [Roller Chain Sprockets](#) > [Bushings](#) > [TAPER-LOCK Bushings](#) > [TAPER-LOCK® Bushings - 1008 through 3030](#) > [Item # 1008](#)

ITEM # 1008, TAPER-LOCK® BUSHINGS - 1008 THROUGH 3030

Metric bore sizes are available upon request and are subject to an alteration charge shown on discount multiplier sheets.

All TAPER-LOCK Bushings are available in steel from stock.
Stainless steel bushings are available on a quoted basis.



Specifications

Bushing	1008
Bore Range¹	0.500 to 1.000 in
A	1.386 in
B	0.875 in

D	1.328 in
F ²	1/4 x 1/2 in
L - Short Hex Key³	1.125 in
L - Standard Key⁴	0.625 in
M - Short Hex Key⁵	1.250 in
M - Key⁶	0.750 in
Weight	0.200 lb

¹ All bore ranges available in 1/16th inch increments.

² 2 Required

³ Space required to tighten bushing. Also space required to loosen screws to permit removal of hub by puller.

⁴ Space required to tighten bushing. Also space required to loosen screws to permit removal of hub by puller.

Standard hex key cut to minimum usable length.

⁵ Space required to remove bushing using jackscrews - no puller required.

⁶ Space required to remove bushing using jackscrews - no puller required.
Standard hex key cut to minimum usable length.