

Product data sheet

Specifications

SQUARE D



Meter pak accessory, hub, 3.00in wire size, Series A L, rainproof, 5.00in

A300L

Product availability: Stock - Normally stocked in distribution facility

Main

| | |
|---------------------------|----------------------|
| Product or Component Type | Hub Conduit entry |
| Range of Product | Series A-L |

Complementary

| | |
|--------------------------|------------------------|
| Cable entry | conduit entry |
| Device Composition | Adaptor plate |
| Hub type | A-L |
| Mounting Support | Direct mounting on box |
| Number of mounting holes | 4 |
| Product Certifications | UL Listed |
| Device Application | conduit entry |
| shape of screw head | Slotted hexagonal |
| Height | 1.5 in (38.1 mm) |
| Width | 4.5 in (114.3 mm) |
| Depth | 4.5 in (114.3 mm) |

Ordering and shipping details

| | |
|-------------------|--------------|
| Category | US10DE400039 |
| Discount Schedule | 0DE4 |
| GTIN | 785901107972 |
| Returnability | Yes |
| Country of origin | US |

Packing Units

| | |
|------------------------|-----------------------|
| Unit Type of Package 1 | PCE |
| Nbr. of units in pkg. | 1 |
| Package 1 Height | 1.500 in (3.810 cm) |
| Package 1 Width | 5.000 in (12.700 cm) |
| Package 1 Length | 5.000 in (12.700 cm) |
| Package weight(Lbs) | 10.880 oz (308.443 g) |
| Unit Type of Package 2 | CAR |

Price is "List Price" and may be subject to a trade discount – check with your local distributor or retailer for actual price.

| | |
|-------------------------------------|-------------------------|
| Number of Units in Package 2 | 5 |
| Package 2 Height | 5.000 in (12.700 cm) |
| Package 2 Width | 9.000 in (22.860 cm) |
| Package 2 Length | 12.500 in (31.750 cm) |
| Package 2 Weight | 3.671 lb(US) (1.665 kg) |

Contractual warranty

| | |
|-----------------|-----------|
| Warranty | 18 months |
|-----------------|-----------|


Environmental Data

Schneider Electric aims to achieve Net Zero status by 2050 through supply chain partnerships, lower impact materials, and circularity via our ongoing “Use Better, Use Longer, Use Again” campaign to extend product lifetimes and recyclability.

[Environmental Data explained >](#)

[How we assess product sustainability >](#)

Use Better

|  Materials and Substances | |
|---|-----------|
| Packaging made with recycled cardboard | No |
| Packaging without single use plastic | No |
| EU RoHS Directive | Compliant |

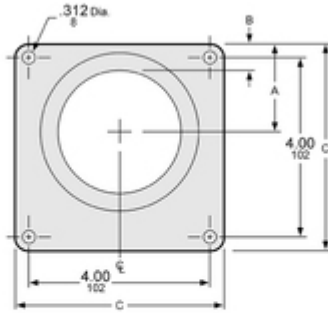
Use Again

|  Repack and remanufacture | |
|---|----|
| Take-back | No |

Technical Illustration

Dimensions

| | | | | | | |
|----------------|---------------|-------|-------|-------|-------|-------|
| Conduit Size | Closing Plate | 2" | 2½" | 3" | 3½" | 4" |
| Catalog Number | ACPL | A200L | A250L | A300L | A350L | A400L |



A/L Hub Mounting Dimensions

| Hub Catalog Number | Conduit Size | "A" | | "B" | | "C" | |
|--------------------|--------------|------|----|-----|----|------|-----|
| | | IN | mm | IN | mm | IN | mm |
| A200L | 2" | 1.94 | 49 | .94 | 24 | 4.63 | 118 |
| A250L | 2½" | 2.00 | 51 | .88 | 22 | 4.63 | 118 |
| A300L | 3" | 2.13 | 54 | .63 | 16 | 5.00 | 127 |
| A350L | 3½" | 2.38 | 60 | .63 | 16 | 5.00 | 127 |
| A400L | 4" | 2.50 | 64 | .50 | 13 | 5.00 | 127 |

Adapter plate required to allow use of "A" hubs on "A/L" size hub openings: catalog number AAP.

Image of product / Alternate images

Alternative

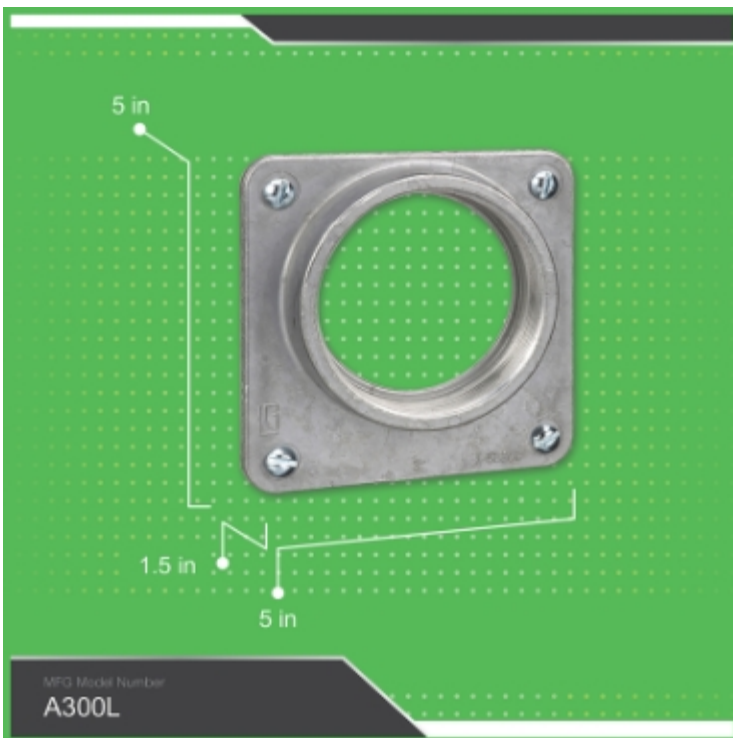


MFG Model Number
A300L


3 in. hub for use with Square D meter sockets and CSEDs


Type A-L size, 4-hole mounting pattern


UL listed, CSA listed, and ANSI certified



5 in

1.5 in

5 in

MFG Model Number
A300L

Compatible products

3 in. Hub for Devices with A-L Openings
MPG Model Number: A300L



Compatible for direct mounting on select Type A-L Hub enclosures use with 3" conduit

