

# Product data sheet

Specifications

SQUARE D



All in one, Homeline, combination service entrance, ringless socket, 200A, surface, 30 spaces, 40 circuits, 22kA SCCR, OH, UG, lever bypass

RC3040M200SL

Product availability: Stock - Normally stocked in distribution facility

## Main

Product or Component Type	All-In-One
Range of Product	Homeline
Meter socket type	Ringless
Hub type	A

## Complementary

Line Rated Current	200 A
Short-circuit current	22 kA
Mounting	Surface
Number of spaces	30
Number of circuits	40
Number of Tandem Breakers	10
Electrical connection	Lugs, line side Lugs, service ground
Wire Size	AWG 6...350 kcmil (aluminium/copper) line side AWG 8...AWG 2/0 (aluminium/copper) service ground
Tightening torque	Main lugs 250 lb.in, AWG 6...350 kcmil, aluminium/copper Service ground 50 lb.in, AWG 3...AWG 2/0, aluminium/copper Service ground 45 lb.in, AWG 6...AWG 4, aluminium/copper Service ground 40 lb.in, AWG 8, aluminium/copper Branch lugs 35 lb.in, AWG 6...AWG 4, aluminium/copper Branch lugs 25 lb.in, AWG 8, aluminium/copper Branch lugs 20 lb.in, AWG 14...AWG 10, aluminium/copper Branch lugs 20 lb.in, AWG 12...AWG 10, aluminium/copper Cover 10 lb.in
Disconnect	Service disconnect (factory installed)
Disconnect Rating	200 A
Branch Breaker Rating	200 A
Service feed location	OH UG
Bypass type	Lever bypass
Width	18.35 in (466.09 mm)
Depth	6.05 in (153.67 mm)
Height	48.62 in (1234.95 mm)

Price is "List Price" and may be subject to a trade discount – check with your local distributor or retailer for actual price.

---

Bus Rating	200.0 A
------------	---------

## Ordering and shipping details

---

Category	US1DE3A00148
----------	--------------

---

Discount Schedule	DE3A
-------------------	------

---

GTIN	785901525059
------	--------------

---

Returnability	Yes
---------------	-----

---

Country of origin	MX
-------------------	----

## Packing Units

---

Unit Type of Package 1	PCE
------------------------	-----

---

Nbr. of units in pkg.	1
-----------------------	---

---

Package 1 Height	6.80 in (17.272 cm)
------------------	---------------------

---

Package 1 Width	19.50 in (49.530 cm)
-----------------	----------------------

---

Package 1 Length	50.30 in (127.762 cm)
------------------	-----------------------

---

Package weight(Lbs)	76.00002 lb(US) (34.473 kg)
---------------------	-----------------------------

---

Unit Type of Package 2	PAL
------------------------	-----

---

Number of Units in Package 2	12
------------------------------	----

---

Package 2 Height	40.00 in (101.600 cm)
------------------	-----------------------

---

Package 2 Width	42.00 in (106.680 cm)
-----------------	-----------------------

---

Package 2 Length	48.00 in (121.920 cm)
------------------	-----------------------

---

Package 2 Weight	936.000 lb(US) (424.562 kg)
------------------	-----------------------------

## Contractual warranty

---

Warranty	18 months
----------	-----------



## Environmental Data

Schneider Electric aims to achieve Net Zero status by 2050 through supply chain partnerships, lower impact materials, and circularity via our ongoing “Use Better, Use Longer, Use Again” campaign to extend product lifetimes and recyclability.

[Environmental Data explained >](#)

[How we assess product sustainability >](#)

### Environmental footprint

Carbon footprint (kg CO2 eq, Total Life cycle)	464
--	-----

Environmental Disclosure	<a href="#">Product Environmental Profile</a>
--------------------------	---

## Use Better

### Materials and Substances

Packaging made with recycled cardboard	No
--	----

Packaging without single use plastic	No
--------------------------------------	----

<a href="#">EU RoHS Directive</a>	Compliant with Exemptions
-----------------------------------	---------------------------

REACH Regulation	<a href="#">REACH Declaration</a>
------------------	-----------------------------------

California proposition 65	<b>WARNING:</b> This product can expose you to chemicals including: Lead and lead compounds, which is known to the State of California to cause cancer and birth defects or other reproductive harm. For more information go to <a href="http://www.P65Warnings.ca.gov">www.P65Warnings.ca.gov</a>
---------------------------	--

## Use Again

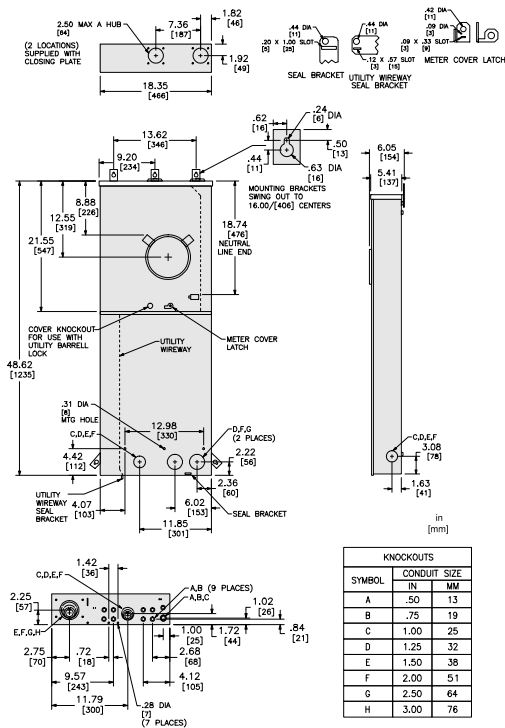
### Repack and remanufacture

Circularity Profile	No need of specific recycling operations
---------------------	--

Take-back	No
-----------	----

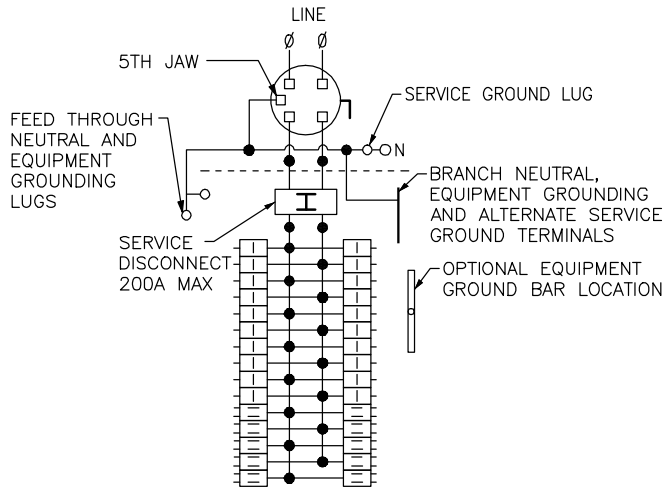
Technical Illustration

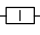
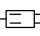
Dimensions



Technical Illustration

Wiring diagram

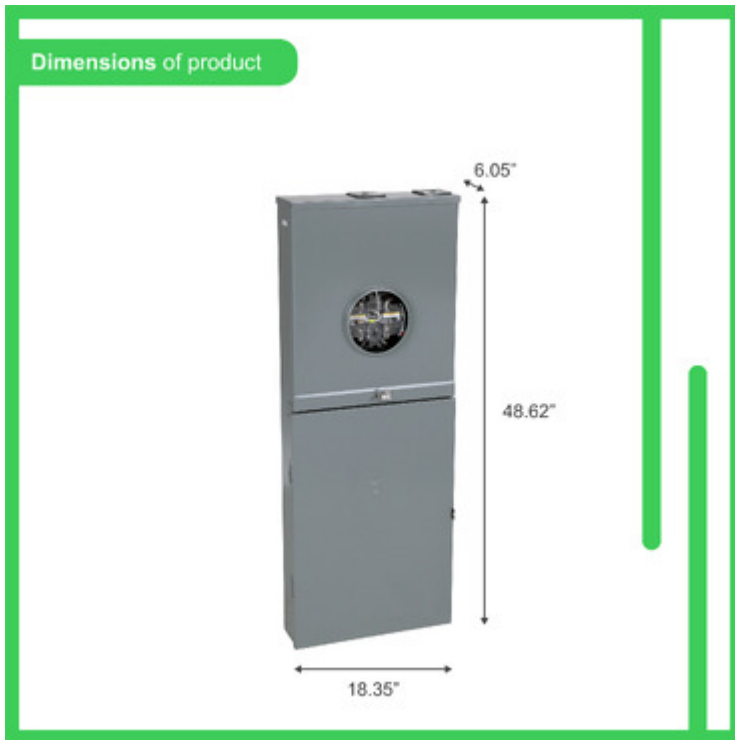


-  ONE SINGLE POLE, ONE PLUG-ON SPACE TYPE HOM ONLY. TWO POLE TYPE HOM MAY PLUG ON TWO ADJACENT SPACES. TWO POLE TYPE HOMA (150-200A) MAY PLUG ON FOUR ADJACENT SPACES.
-  TWO SINGLE POLE, ONE PLUG-ON SPACE TYPE HOMT OR ONE SINGLE POLE TYPE HOM, TWO POLE TYPE HOMT OR HOM (15-100A) MAY PLUG ON TWO ADJACENT SPACES. TWO POLE HOMA (150-200A) MAY PLUG ON FOUR ADJACENT SPACES.

A SQUARE D UL LISTED SECONDARY SURGE ARRESTER MAY PLUG ON TWO ADJACENT SPACES. ORDER CATALOG NO. HOM2175SB.

Image of product / Alternate images

Alternative



**200 A** 120/240 V~, 1Ø, 50/60 Hz., 3 wire/hilos  
208Y/120 V~, 1Ø, 50/60 Hz., 3 wire/hilos

**30** Spaces  
Espacios

**40** Circuits  
Circuitos

**Main Breaker**  
Interruptor Principal

**Rainproof**  
Resistente a la intemperie

**Ringless Type**  
Tipo sin anillo

**Underground or Overhead**  
Aérea o Subterránea

INCLUDES INCLUIDOS



Lever Bypass  
Derivación tipo palanca  
Surface  
Sobreponer  
5-jaw meter socket  
Base de medición con 5 mordazas  
76 lbs / 34 kg  
W18.1" x H48.6" x D4.9"