

Product data sheet

Specifications

SQUARE D



Mini circuit breaker, QO, 15A, 1 pole, 120VAC, 10kA, combo arc fault, plug on neutral, plug in mount, UL listed [TAA]

QO115PAF

Product availability: Stock - Normally stocked in distribution facility

Main

Product	Miniature circuit-breaker
Range	QO
Current Rating	15 A
Voltage Rating	120 V AC
Mounting Type	Plug-in
Number of Poles	1P
Circuit Breaker Type	Combination ARC-fault
Ratings	HACR rated
Electrical Connection	Pressure plate
Connections Terminals	Plug-on neutral

Complementary

Interrupt Rating	10 kA 120 V AC
Number of Panel Spaces	1
Wire Size	AWG 14...AWG 8 copper AWG 12...AWG 8 aluminium
Tightening Torque	35.4 lbf.in (4 N.m)
Height	2.72 in (69.08 mm)
Width	0.75 in (19.05 mm)
Depth	4.10 in (104.14 mm)
Net Weight	0.351 lb(US) (0.159 kg)

Environment

Certifications	UL Listed
Ambient Rating	104 °F (40 °C)

Ordering and shipping details

Category	US1DE2A06303
Discount Schedule	DE2A
GTIN	785901778356
Returnability	Yes

Price is "List Price" and may be subject to a trade discount – check with your local distributor or retailer for actual price.

Country of origin	US
-------------------	----

Packing Units

Unit Type of Package 1	PCE
------------------------	-----

Nbr. of units in pkg.	1
-----------------------	---

Package 1 Height	1.22 in (3.1 cm)
------------------	------------------

Package 1 Width	4.02 in (10.2 cm)
-----------------	-------------------

Package 1 Length	4.33 in (11.0 cm)
------------------	-------------------

Package weight(Lbs)	6.6 oz (186 g)
---------------------	----------------

Unit Type of Package 2	CAR
------------------------	-----

Number of Units in Package 2	57
------------------------------	----

Package 2 Height	20.71 in (52.6 cm)
------------------	--------------------

Package 2 Width	3.82 in (9.7 cm)
-----------------	------------------

Package 2 Length	13.62 in (34.6 cm)
------------------	--------------------

Package 2 Weight	23.435 lb(US) (10.630 kg)
------------------	---------------------------

Compliance

Compliance	TAA
------------	-----

Environmental Data

Schneider Electric aims to achieve Net Zero status by 2050 through supply chain partnerships, lower impact materials, and circularity via our ongoing “Use Better, Use Longer, Use Again” campaign to extend product lifetimes and recyclability.

[Environmental Data explained >](#)

[How we assess product sustainability >](#)

Environmental footprint

Carbon footprint (kg CO2 eq, Total Life cycle)	24
--	----

Use Better

Materials and Substances

Packaging made with recycled cardboard	Yes
--	-----

Packaging without single use plastic	Yes
--------------------------------------	-----

EU RoHS Directive	Under investigation
-------------------	---------------------

REACH Regulation	REACH Declaration
------------------	-----------------------------------

California proposition 65	WARNING: This product can expose you to chemicals including: Nickel compounds, which is known to the State of California to cause cancer. For more information go to www.P65Warnings.ca.gov
---------------------------	--

Use Again

Repack and remanufacture

Take-back	No
-----------	----

Technical Illustration

Dimensions

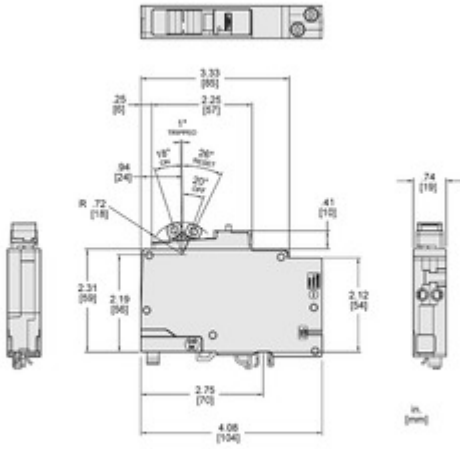


Image of product / Alternate images

Alternative

Technical Benefits
Dual Function Electronic Breaker

- Protects against parallel and series arcs** (Icon: Shield with lightning bolt)
- Protects against overloads and short-circuits** (Icon: Person with lightning bolt)
- Product characteristics conformity is certified by the Underwriters Laboratories (UL)** (Icon: Person with checkmark)
- The current capacity that this circuit breaker is able to interrupt before breaking is 10kA** (Icon: Lightning bolt in a square)
- Quickly identify tripped breakers with our Visi-Trip indicator** (Icon: Magnifying glass)
- Compatible with QO electrical panels and CSEDs with 1 spaces** (Icon: Lightning bolt)

QO™

QO115PAFC

15A

120 VAC ~ 60 Hz
10,000 AIR/A nom.I

1 Pole
Polo

Plug-on Neutral
Neutro enchufable

Arc fault protection
Protección para la falla de arco

- Detects parallel and series arcing faults** (Icon: Lightning bolt with > symbol)
- Simplifies installation, no pigtails** (Icon: Wires with slash)
- LED and Time-saver diagnostics** (Icon: Clock)