

Product data sheet

Specifications

SQUARE D



Load center, QO, 3 phase, 42 spaces, 42 circuits, 100A convertible main breaker, NEMA1, special

QO342MQB100

Product availability: Stock - Normally stocked in distribution facility

Main

Marketing Trade Name	QO
Product Type	Load Center
Cover Type	Surface cover

Complementary

PoN Convertible Mains (lugs)	Main breaker
Rated Current	125 A
Number of Spaces	42
Max Short Circuit Current Rating	25 kA
Maximum Number of Single Pole Circuits	42
Maximum Number of Tandem Breakers	0
Number of Phases	3 phase 4 wires 3 phase 3 wires
Voltage Rating	208Y/120 V AC 240/120 V delta AC
Wire Size	AWG 4...300 kcmil aluminium/copper
Ground Bar	Grounding bar (ordered separately)
Electrical Connection	Lugs
Busbar Material	Tin plated copper: busbar
Enclosure Material	Welded sheet steel
Surface Finish	Baked enamel Gray
Height	39.3 in (997 mm)
Width	14.3 in (362 mm)
Depth	3.7 in (94 mm)

Environment

Enclosure Rating	NEMA 3R weatherproof enclosure
Ambient Air Temperature for Operation	23 °F (-5 °C) 104 °F (40 °C)
Product Certifications	CSA

Ordering and shipping details

Price is "List Price" and may be subject to a trade discount – check with your local distributor or retailer for actual price.

Category	US10DE300158
Discount Schedule	0DE3
GTIN	785901884217
Returnability	Yes

Packing Units

Unit Type of Package 1	PCE
Nbr. of units in pkg.	1
Package 1 Height	4.29 in (10.9 cm)
Package 1 Width	14.69 in (37.3 cm)
Package 1 Length	40.12 in (101.9 cm)
Package weight(Lbs)	30.999 lb(US) (14.061 kg)

Contractual warranty

Warranty	18 months
-----------------	-----------

Environmental Data

Schneider Electric aims to achieve Net Zero status by 2050 through supply chain partnerships, lower impact materials, and circularity via our ongoing "Use Better, Use Longer, Use Again" campaign to extend product lifetimes and recyclability.

[Environmental Data explained >](#)

[How we assess product sustainability >](#)

Environmental footprint

[Environmental Disclosure](#)

[Product Environmental Profile](#)

Use Better

Materials and Substances

Packaging made with recycled cardboard

No

Packaging without single use plastic

No

[EU RoHS Directive](#)

Compliant with Exemptions

REACH Regulation

[REACH Declaration](#)

California proposition 65

WARNING: This product can expose you to chemicals including: Lead and lead compounds, which is known to the State of California to cause cancer and birth defects or other reproductive harm. For more information go to www.P65Warnings.ca.gov

Use Again

Repack and remanufacture

Circularity Profile

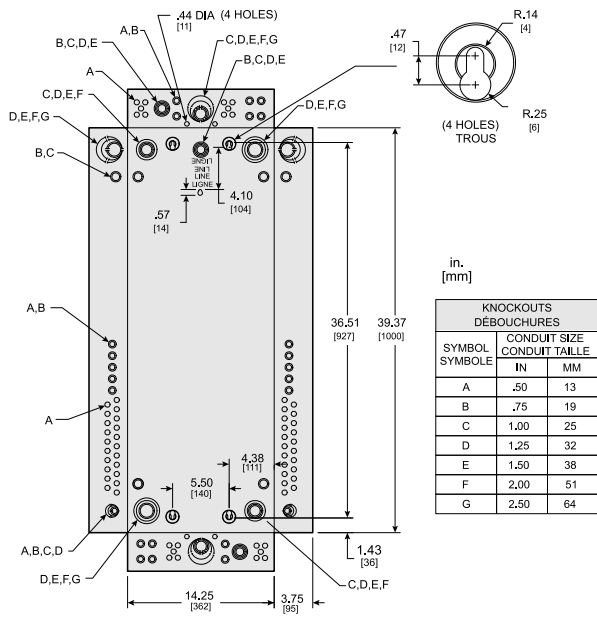
No need of specific recycling operations

Take-back

No

Technical Illustration

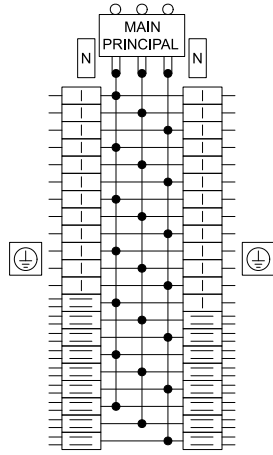
Dimensions




ALL DIMENSIONS ARE APPROXIMATE.
REFER TO TECHNICAL DRAWINGS AND DOCUMENTATION FOR COMPLETE INFORMATION.

Technical Illustration

Wiring diagram



QO342MQB100
QO342MQB200

 EQUIPMENT GROUNDING TERMINALS
BORNES DE MISE À LA TERRE DE L'APPAREIL

REFER TO TECHNICAL DRAWINGS AND DOCUMENTATION FOR COMPLETE INFORMATION.