

Product data sheet

Specifications



discrete I/O module Modicon Momentum - 16 I/O solid state

170ADM35010

Product availability: Stock - Normally stocked in distribution facility

Main

Range of Product	Modicon Momentum automation platform
Product or Component Type	Discrete solid state I/O base DC
Group of channels	2 groups of 8 outputs 1 group of 16 inputs
Discrete input number	16 IEC 1131-2 Type 1
Discrete input logic	Positive
Discrete input voltage	24 V DC
Discrete output number	16
Discrete output type	Solid state switch
Discrete output voltage	≤ 30 V DC 24 V DC
Discrete output logic	Positive
Protective treatment	TC

Complementary

[Us] rated supply voltage	24 V DC
Input voltage limits	- 3...30 V
Voltage state 0 guaranteed	-3...5 V
Voltage state 1 guaranteed	11...30 V
Current state 0 guaranteed	≤ 1.2 mA
Current state 1 guaranteed	≥ 2.5 mA
Input resistance	4 kOhm
Discrete output current	4 A per group 8 A per module 0.5 A per point
Maximum leakage current	1 mA 24 V output circuit)
Peak output current	5 A
Maximum voltage drop	< 0.5 V 0.5 A at state 1 output circuit
Fault type	Overload on output
Response time	< 0.1 ms from state 0 to state 1 on output < 0.1 ms from state 1 to state 0 on output 2.2 ms from state 0 to state 1 on input 3.3 ms from state 1 to state 0 on input
Isolation between channels and bus	500 V AC

Price is "List Price" and may be subject to a trade discount – check with your local distributor or retailer for actual price.

Power dissipation	6 W ≤ 8 W
Marking	CE
Terminals description PLC n°1	(L+)PW_POS (8)IN_DIS#8 (6)IN_DIS#6 (5)IN_DIS#5 TB (2)IN_DIS#2 (12)IN_DIS#12 (M-)PW_NEG (15)IN_DIS#15 (13)IN_DIS#13 (10)IN_DIS#10 (3)IN_DIS#3 (9)IN_DIS#9 (7)IN_DIS#7 (1)IN_DIS#1 (11)IN_DIS#11 (14)IN_DIS#14 (16)IN_DIS#16 (4)IN_DIS#4
Terminals description PLC n°2	(10)OUT_DIS#10 (6)OUT_DIS#6 (8)OUT_DIS#8 (1)OUT_DIS#1 (11)OUT_DIS#11 (4)OUT_DIS#4 (5)OUT_DIS#5 (15)OUT_DIS#15 (2L+)PW_POS TB_1 (7)OUT_DIS#7 (2)OUT_DIS#2 (14)OUT_DIS#14 (9)OUT_DIS#9 (13)OUT_DIS#13 (3)OUT_DIS#3 (1L+)PW_POS (12)OUT_DIS#12
Local signalling	16 LEDs for channel status
Current consumption	250 mA 24 V DC
Depth	1.9 in (47.5 mm)
Height	5.6 in (141.5 mm)
Width	4.9 in (125 mm)
Net Weight	0.4 lb(US) (0.2 kg)

Environment

Product Certifications	UL CSA
Resistance to electrostatic discharge	4 kV contact IEC 801-2 8 kV on air IEC 801-2
Resistance to electromagnetic fields	9.1 V/m (10 V/m) 80...1000 MHz IEC 801-3
Ambient Air Temperature for Operation	32...140 °F (0...60 °C)
Ambient Air Temperature for Storage	-40...185 °F (-40...85 °C)
Relative Humidity	95 % without condensation
Operating altitude	≤ 16404.2 ft (5000 m)

Ordering and shipping details

Category	US1PC3118206
Discount Schedule	PC31
GTIN	3595861000261
Returnability	Yes
Country of origin	ID

Packing Units

Unit Type of Package 1	PCE
Nbr. of units in pkg.	1
Package 1 Height	2.32 in (5.900 cm)
Package 1 Width	7.17 in (18.200 cm)
Package 1 Length	10.24 in (26.000 cm)
Package weight(Lbs)	14.321 oz (406.000 g)
Unit Type of Package 2	S03
Number of Units in Package 2	10
Package 2 Height	11.81 in (30.000 cm)
Package 2 Width	11.81 in (30.000 cm)
Package 2 Length	15.75 in (40.000 cm)
Package 2 Weight	9.716 lb(US) (4.407 kg)
Unit Type of Package 3	P06
Number of Units in Package 3	80
Package 3 Height	29.53 in (75.000 cm)
Package 3 Width	23.62 in (60.000 cm)
Package 3 Length	31.50 in (80.000 cm)
Package 3 Weight	101.413 lb(US) (46.000 kg)

Contractual warranty

Warranty	18 months
----------	-----------



Environmental Data

Schneider Electric aims to achieve Net Zero status by 2050 through supply chain partnerships, lower impact materials, and circularity via our ongoing “Use Better, Use Longer, Use Again” campaign to extend product lifetimes and recyclability.

[Environmental Data explained >](#)

[How we assess product sustainability >](#)

Environmental footprint

[Environmental Disclosure](#)

[Product Environmental Profile](#)

Use Better

Materials and Substances

Packaging made with recycled cardboard

Yes

Packaging without single use plastic

No

[EU RoHS Directive](#)

Pro-active compliance (Product out of EU RoHS legal scope)

SCIP Number

441d5619-6318-4bbf-ac83-96d05888ee7e

REACH Regulation

[REACH Declaration](#)

California proposition 65

WARNING: This product can expose you to chemicals including: Lead and lead compounds, which is known to the State of California to cause cancer and birth defects or other reproductive harm. For more information go to www.P65Warnings.ca.gov

Use Again

Repack and remanufacture

[Circularity Profile](#)

[End of Life Information](#)

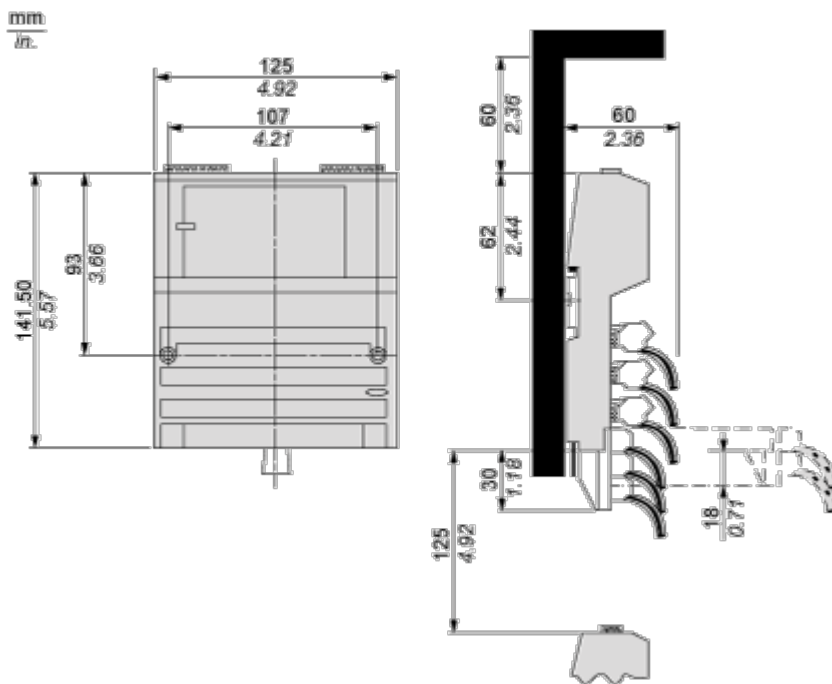
Take-back

No

Dimensions Drawings

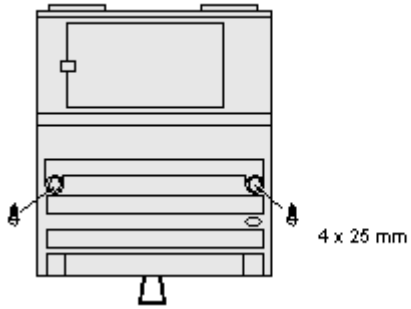
Standard Adapter on a Typical Base

Dimensions



Mounting and Clearance

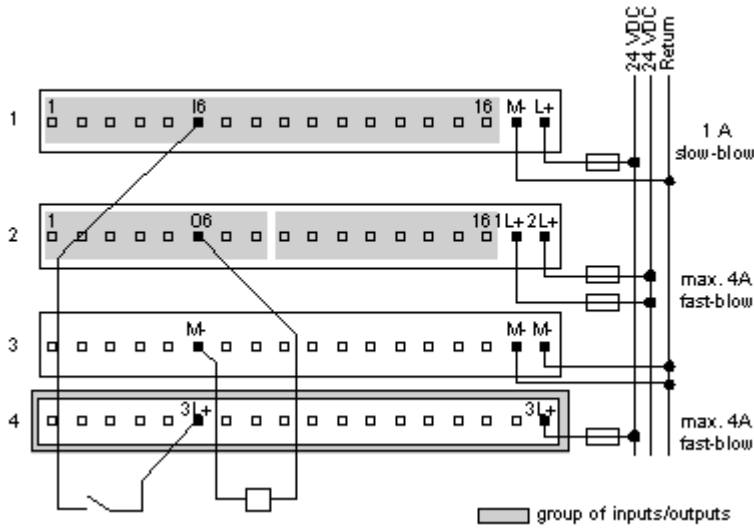
Mounting on a Wall



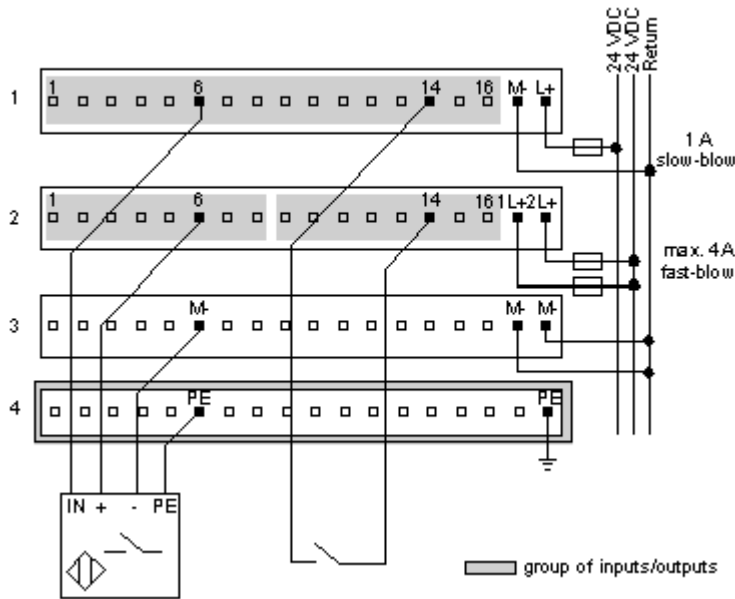
Connections and Schema

External Wiring Diagrams

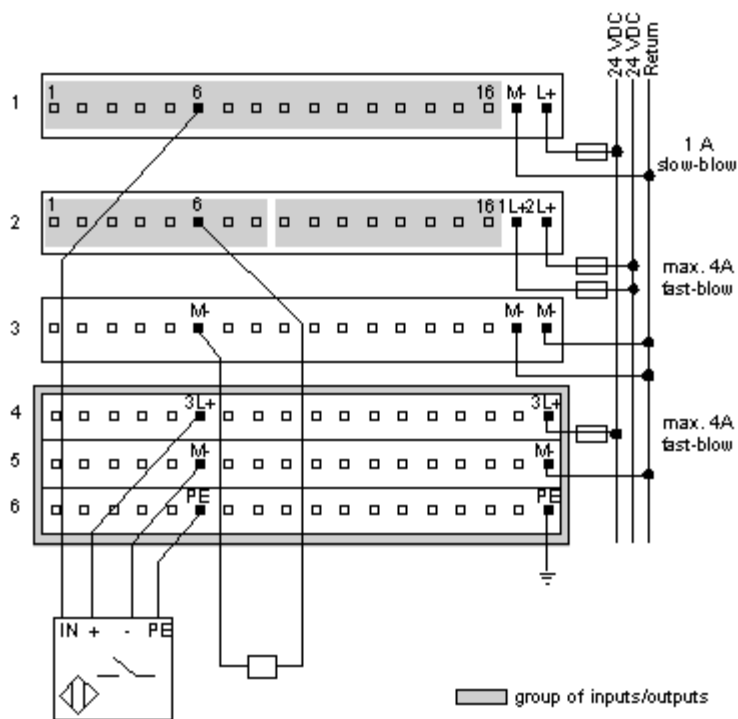
2-Wire Devices



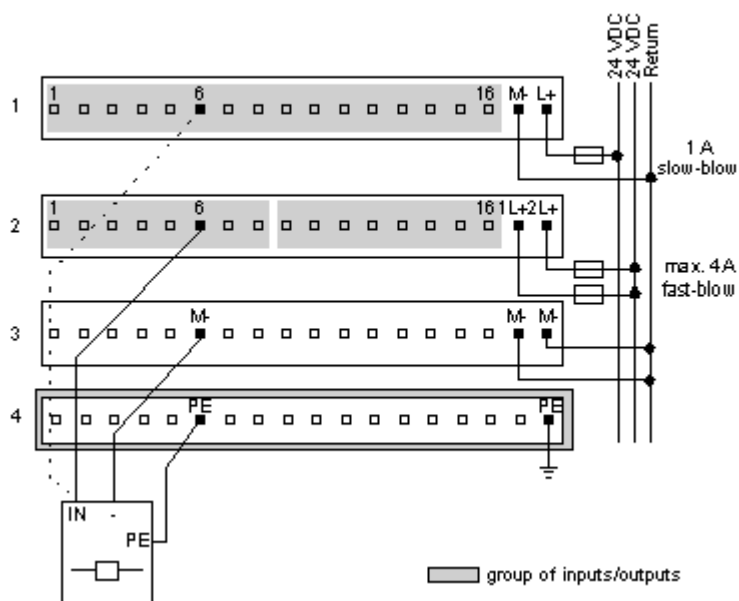
Sensor Activated by Output



Four-Wire Sensor with a Two-Wire Actuator



Broken Wire Detection



Internal Pin Connections

Rows 1 through 3 show the internal connections between terminals on the I/O base. Rows 4 through 6 show the internal connections on the optional busbar.

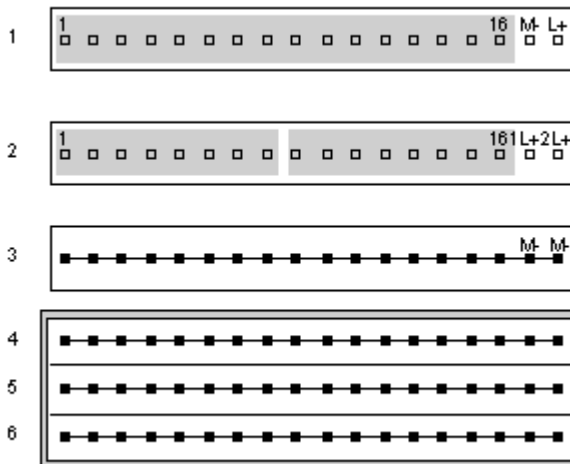


Image of product / Alternate images

Alternative

