

# Product data sheet

Specifications

SQUARE D



Load center, Homeline, 1 phase, 30 spaces, 60 circuits, 150A convertible main breaker, PoN, NEMA1, value pack

HOM3060M150PCVP

Product availability: Stock - Normally stocked in distribution facility

## Main

Product Type	Load Center
Marketing Trade Name	Homeline
Load Center Type	PoN Convertible Mains (breaker)
Rated Current	150 A
Number of Spaces	30
Maximum Number of Single Pole Circuits	60
Enclosure Rating	NEMA 1 indoor enclosure
Cover Type	Combination flush/surface cover
Electrical Connection	Lugs
Provided Equipment	Circuit-breaker 3) 1P 20 A 120/240 V AC Circuit-breaker 2) 2P 30 A 120/240 V AC Circuit-breaker 1) 2P 150 A 120/240 V AC main supply ready assembled

## Complementary

Max Short Circuit Current Rating	22 kA
Maximum Number of Tandem Breakers	30
Number of Phases	1 phase 3 wires
Voltage Rating	120/240 V AC
Wire Size	AWG 4...250 kcmil aluminium/copper
Ground Bar	Grounding bar (ordered separately)
Busbar Material	Tin plated aluminium: busbar
Enclosure Material	Welded sheet steel
Surface Finish	Baked enamel Gray
Box Number	10
Bus Rated Current	225.0 A
Height	33.8 in (858 mm)
Width	14.3 in (362 mm)
Depth	3.7 in (95 mm)

## Environment

Ambient Air Temperature for Operation	23 °F (-5 °C) 104 °F (40 °C)
---------------------------------------	---------------------------------

Price is "List Price" and may be subject to a trade discount – check with your local distributor or retailer for actual price.

---

Product Certifications	UL listed file E-6294
------------------------	-----------------------

## Ordering and shipping details

---

Category	US1DE3C00185
----------	--------------

---

Discount Schedule	DE3C
-------------------	------

---

GTIN	785901977704
------	--------------

---

Returnability	Yes
---------------	-----

---

Country of origin	MX
-------------------	----

## Packing Units

---

Unit Type of Package 1	PCE
------------------------	-----

---

Nbr. of units in pkg.	1
-----------------------	---

---

Package 1 Height	5.25 in (13.34 cm)
------------------	--------------------

---

Package 1 Width	15.81 in (40.16 cm)
-----------------	---------------------

---

Package 1 Length	35.50 in (90.17 cm)
------------------	---------------------

---

Package weight(Lbs)	35.550 lb(US) (16.125 kg)
---------------------	---------------------------

---

Unit Type of Package 2	PAL
------------------------	-----

---

Number of Units in Package 2	18
------------------------------	----

---

Package 2 Height	36.50 in (92.71 cm)
------------------	---------------------

---

Package 2 Width	40.00 in (101.6 cm)
-----------------	---------------------

---

Package 2 Length	48.00 in (121.92 cm)
------------------	----------------------

---

Package 2 Weight	640.0003 lb(US) (290.299 kg)
------------------	------------------------------

## Environmental Data

Schneider Electric aims to achieve Net Zero status by 2050 through supply chain partnerships, lower impact materials, and circularity via our ongoing “Use Better, Use Longer, Use Again” campaign to extend product lifetimes and recyclability.

[Environmental Data explained >](#)

[How we assess product sustainability >](#)

### Environmental footprint

Carbon footprint (kg CO2 eq, Total Life cycle)	84
--	----

Environmental Disclosure	<a href="#">Product Environmental Profile</a>
--------------------------	---

## Use Better

### Materials and Substances

Packaging made with recycled cardboard	No
--	----

Packaging without single use plastic	No
--------------------------------------	----

EU RoHS Directive	Under investigation
-------------------	---------------------

REACH Regulation	<a href="#">REACH Declaration</a>
------------------	-----------------------------------

California proposition 65	<b>WARNING:</b> This product can expose you to chemicals including: Lead and lead compounds, which is known to the State of California to cause cancer and birth defects or other reproductive harm. For more information go to <a href="http://www.P65Warnings.ca.gov">www.P65Warnings.ca.gov</a>
---------------------------	--

## Use Again

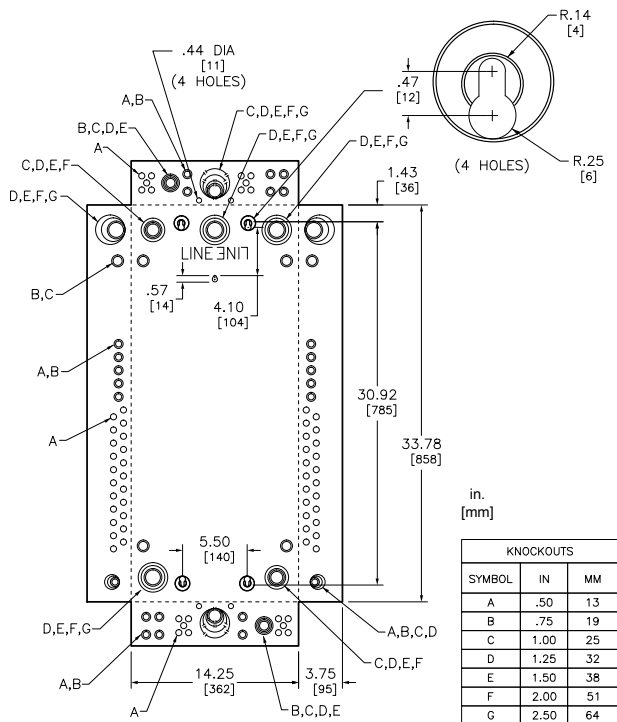
### Repack and remanufacture

Circularity Profile	No need of specific recycling operations
---------------------	--

Take-back	No
-----------	----

Technical Illustration

Dimensions

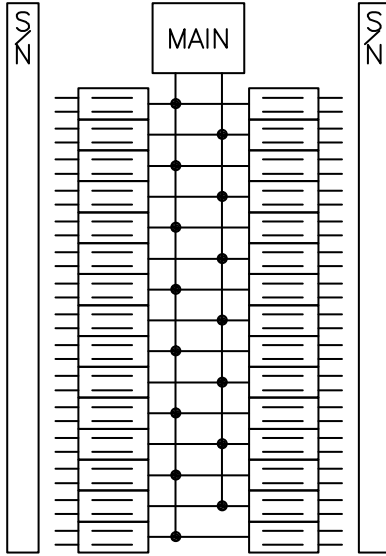


# Product data sheet    HOM3060M150PCVP

Technical Illustration

Wiring diagram

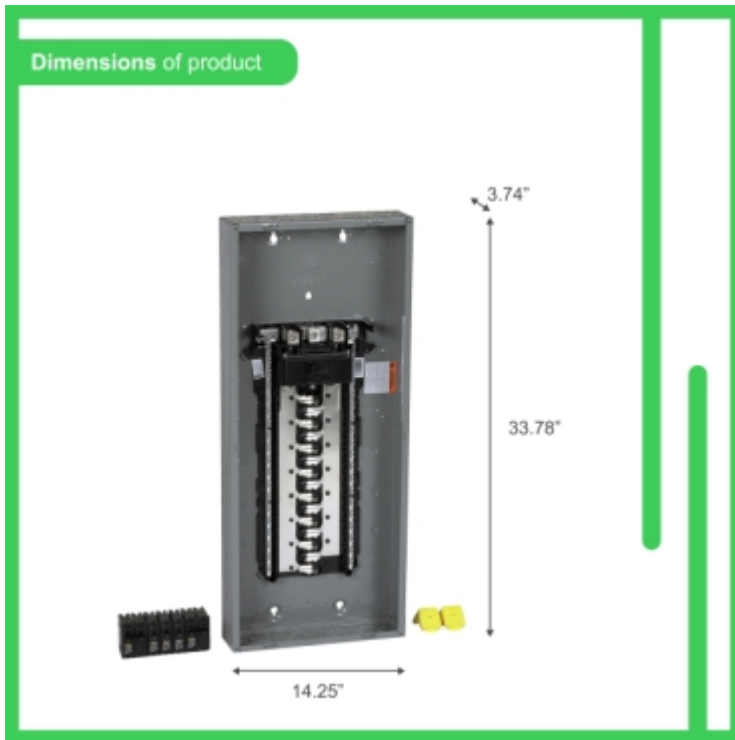
---



HOM3060M100PC  
HOM3060M125PC  
HOM3060M150PC  
HOM3060M200PC

Image of product / Alternate images

Alternative



**150A**  
120/240 V~ Max., 1Ø, 50/60 Hz.

**30** Spaces  
Espacios

**60** Circuits  
Circuitos

**Main Breaker**  
Interruptor Principal

**Indoor**  
Interior

INCLUDES INCLUIDOS



Surface / Flush  
Sobreponer /  
Empotrar  
**34.00 lbs / 15.42 kg**  
W14.2" x H33.8" x D3.8"