

Product data sheet

Specifications

SQUARE D



Load center, Homeline, 1 phase, 40 spaces, 80 circuits, 200A convertible main breaker, PoN, NEMA1, value pack

HOM4080M200PC1AVP

Product availability: Stock - Normally stocked in distribution facility

Main

Product Type	Load Center
Marketing Trade Name	Homeline
Load Center Type	PoN Convertible Mains (breaker)
Rated Current	200 A
Number of Spaces	40
Maximum Number of Single Pole Circuits	80
Enclosure Rating	NEMA 1 indoor enclosure
Cover Type	Combination flush/surface cover
Electrical Connection	Lugs
Provided Equipment	Circuit-breaker 3) 1P 20 A 120/240 V CA Circuit-breaker 2) 2P 30 A 120/240 V CA Arc fault circuit breaker 1) 1P 15 A 120/240 V CA

Complementary

Max Short Circuit Current Rating	22 kA
Maximum Number of Tandem Breakers	40
Number of Phases	1 phase 3 wires
Voltage Rating	120/240 V AC
Wire Size	AWG 4...250 kcmil aluminium/copper
Ground Bar	Grounding bar (ordered separately)
Busbar Material	Tin plated aluminium: busbar
Enclosure Material	Welded sheet steel
Surface Finish	Baked enamel Gray
Box Number	12
Bus Rated Current	225.0 A
Height	39.4 in (1000 mm)
Width	14.3 in (362 mm)
Depth	3.7 in (95 mm)

Environment

Ambient Air Temperature for Operation	23 °F (-5 °C) 104 °F (40 °C)
---------------------------------------	---------------------------------

Price is "List Price" and may be subject to a trade discount – check with your local distributor or retailer for actual price.

Product Certifications	UL listed file E-6294
------------------------	-----------------------

Ordering and shipping details

Category	US1DE3C00185
Discount Schedule	DE3C
GTIN	785901977049
Returnability	Yes
Country of origin	US

Packing Units

Unit Type of Package 1	PCE
Nbr. of units in pkg.	1
Package 1 Height	14.25 in (36.2 cm)
Package 1 Width	39.37 in (100.0 cm)
Package 1 Length	3.74 in (9.5 cm)
Package weight(Lbs)	40.479 lb(US) (18.361 kg)
Unit Type of Package 2	PAL
Number of Units in Package 2	18
Package 2 Height	40.00 in (101.6 cm)
Package 2 Width	42.00 in (106.68 cm)
Package 2 Length	48.00 in (121.92 cm)
Package 2 Weight	765.0003 lb(US) (346.998 kg)



Environmental Data

Schneider Electric aims to achieve Net Zero status by 2050 through supply chain partnerships, lower impact materials, and circularity via our ongoing “Use Better, Use Longer, Use Again” campaign to extend product lifetimes and recyclability.

[Environmental Data explained >](#)

[How we assess product sustainability >](#)

Environmental footprint

Carbon footprint (kg CO2 eq, Total Life cycle)	96
--	----

Environmental Disclosure	Product Environmental Profile
--------------------------	---

Use Better

Materials and Substances

Packaging made with recycled cardboard	No
--	----

Packaging without single use plastic	No
--------------------------------------	----

EU RoHS Directive	Under investigation
-------------------	---------------------

REACH Regulation	REACH Declaration
------------------	-----------------------------------

California proposition 65	WARNING: This product can expose you to chemicals including: Lead and lead compounds, which is known to the State of California to cause cancer and birth defects or other reproductive harm. For more information go to www.P65Warnings.ca.gov
---------------------------	--

Use Again

Repack and remanufacture

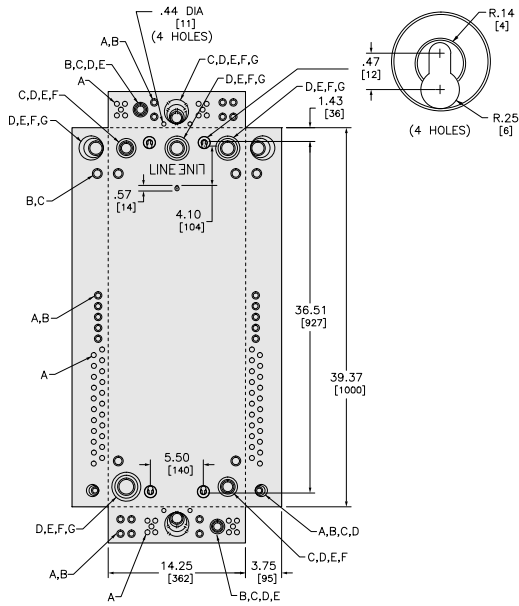
Circularity Profile	No need of specific recycling operations
---------------------	--

Take-back	No
-----------	----

Product data sheet HOM4080M200PC1AVP

Technical Illustration

Dimensions



KNOCKOUTS							
SYMBOL	A	B	C	D	E	F	G
IN	.50	.75	1.00	1.25	1.50	2.00	2.50
MM	13	19	25	32	38	51	64

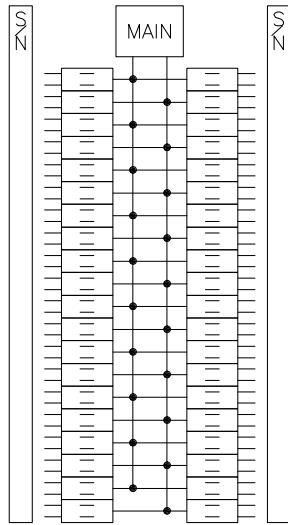
in.
[mm]

All dimensions are approximate. Refer to technical drawings and documents.

Product data sheet HOM4080M200PC1AVP

Technical Illustration

Wiring diagram



HOM4080M200PC

Product data sheet HOM4080M200PC1AVP

Image of product / Alternate images

Alternative

200A

120/240 V- Max., 1Ø, 50/60 Hz.

40Spaces
Espacios

80Circuits
Circuitos

Main **Breaker**
Interruptor
Principal

Indoor
Interior

INCLUDES INCLUIDOS

Surface / Flush
Sobreponer /
Empotrar

40.52 lbs / 18.38 kg
W14.2" x H39.4" x D3.8"

