

Product data sheet

Specifications

SQUARE D



Load center, Homeline, 1 phase, 20 spaces, 40 circuits, 100A convertible main breaker, PoN, NEMA3R

HOM2040M100PRB

Product availability: Stock - Normally stocked in distribution facility

Main

Product Type	Load Center
Marketing Trade Name	Homeline
Load Center Type	PoN Convertible Mains (breaker)
Rated Current	100 A
Number of Spaces	20
Maximum Number of Single Pole Circuits	40
Enclosure Rating	NEMA 3R weatherproof enclosure
Cover Type	Surface cover
Electrical Connection	Lugs
Provided Equipment	Circuit-breaker 1) 2P 100 A 120/240 V CA main supply ready assembled

Complementary

Max Short Circuit Current Rating	22 kA
Maximum Number of Tandem Breakers	20
Number of Phases	1 phase 3 wires
Voltage Rating	120/240 V AC
Wire Size	AWG 6...AWG 2/0 aluminium AWG 6...AWG 1 copper
Ground Bar	Grounding bar (ordered separately)
Busbar Material	Tin plated aluminium: busbar
Enclosure Material	Welded galvanized steel
Surface Finish	Baked enamel Gray
Box Number	4R
Bus Rated Current	125.0 A
Height	22.05 in (560 mm)
Width	14.8 in (375 mm)
Depth	4.5 in (115 mm)

Environment

Ambient Air Temperature for Operation	23 °F (-5 °C) 104 °F (40 °C)
---------------------------------------	---------------------------------

Price is "List Price" and may be subject to a trade discount – check with your local distributor or retailer for actual price.

Product Certifications	UL listed file E-6294
------------------------	-----------------------

Ordering and shipping details

Category	US1DE3C00145
----------	--------------

Discount Schedule	DE3C
-------------------	------

GTIN	785901977322
------	--------------

Returnability	Yes
---------------	-----

Country of origin	US
-------------------	----

Packing Units

Unit Type of Package 1	PCE
------------------------	-----

Nbr. of units in pkg.	1
-----------------------	---

Package 1 Height	5.00 in (12.700 cm)
------------------	---------------------

Package 1 Width	15.50 in (39.370 cm)
-----------------	----------------------

Package 1 Length	24.00 in (60.960 cm)
------------------	----------------------

Package weight(Lbs)	24.921 lb(US) (11.304 kg)
---------------------	---------------------------

Unit Type of Package 2	PAL
------------------------	-----

Number of Units in Package 2	40
------------------------------	----

Package 2 Height	43.00 in (109.220 cm)
------------------	-----------------------

Package 2 Width	40.00 in (101.600 cm)
-----------------	-----------------------

Package 2 Length	48.00 in (121.920 cm)
------------------	-----------------------

Package 2 Weight	875.000 lb(US) (396.893 kg)
------------------	-----------------------------




Environmental Data


Schneider Electric aims to achieve Net Zero status by 2050 through supply chain partnerships, lower impact materials, and circularity via our ongoing “Use Better, Use Longer, Use Again” campaign to extend product lifetimes and recyclability.

[Environmental Data explained >](#)


[How we assess product sustainability >](#)

 Environmental footprint	
Carbon footprint (kg CO2 eq, Total Life cycle)	59
Environmental Disclosure	Product Environmental Profile

Use Better

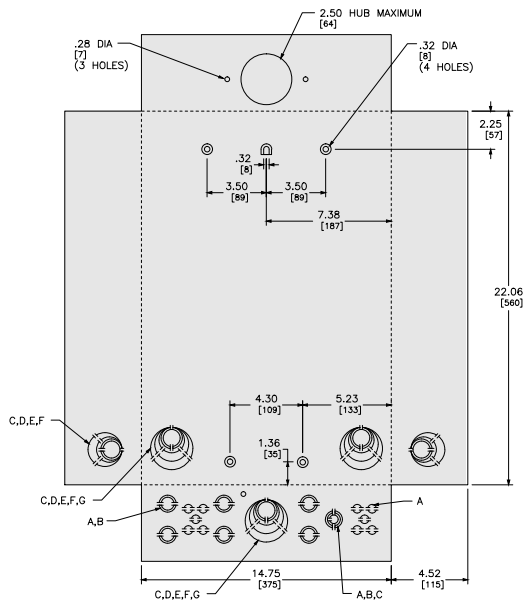
 Materials and Substances	
Packaging made with recycled cardboard	No
Packaging without single use plastic	No
EU RoHS Directive	Under investigation
REACH Regulation	REACH Declaration
California proposition 65	WARNING: This product can expose you to chemicals including: Lead and lead compounds, which is known to the State of California to cause cancer and birth defects or other reproductive harm. For more information go to www.P65Warnings.ca.gov

Use Again

 Repack and remanufacture	
Circularity Profile	No need of specific recycling operations
Take-back	No

Technical Illustration

Dimensions



in.
[mm]

KNOCKOUTS							
SYMBOL	A	B	C	D	E	F	G
IN	.50	.75	1.00	1.25	1.50	2.00	2.50
MM	13	19	25	32	38	51	64

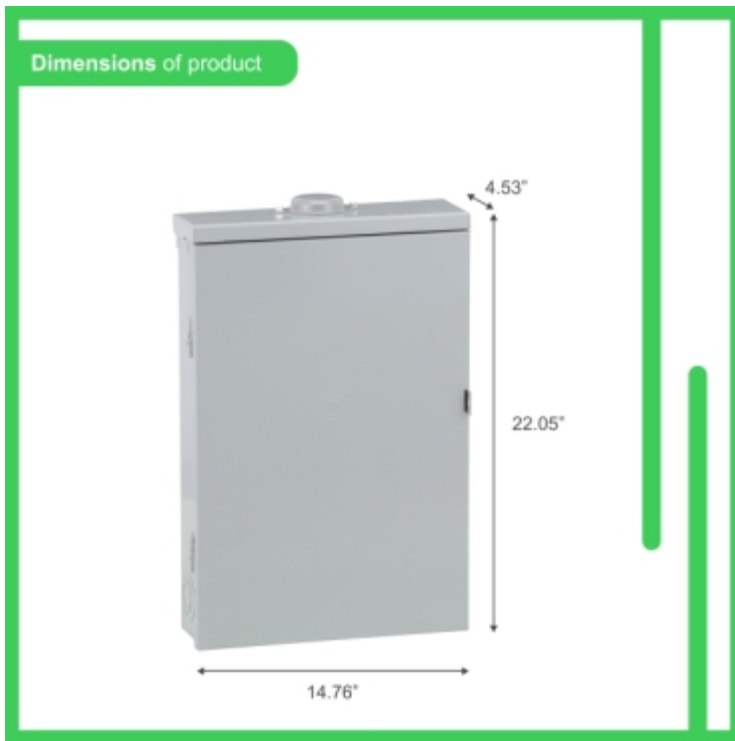
Dimensions are approximate. Refer to technical documentation for additional detail.

Technical Illustration

Wiring diagram

Image of product / Alternate images

Alternative



100A
120/240 V- Max., 1Ø, 50/60 Hz.

20 Spaces
Espacios

40 Circuits
Circuitos

Main Breaker
Interruptor Principal

Rainproof
Resistente a la intemperie

INCLUDES INCLUIDOS

Surface
Sobreponer

24.5 lbs / 11.1 kg
W14.8" x H22.5" x D4.5"

