

# Product data sheet

Specifications

SQUARE D



Meter mains, Homeline, CSED, ringless socket, 200A, surface mount, maximum 8 spaces, 16 circuits, horn bypass

RC816D200CH

⚠ Discontinued

⚠ Discontinued on: Jul 31, 2025

⚠ To be end-of-service on: Nov 23, 2026

**Product availability: Stock - Normally stocked in distribution facility**

## Main

Product or Component Type	Meter Mains
Range of Product	Homeline

## Complementary

Line Rated Current	200 A
Short-circuit current	10 kA
Network number of phases	1
Meter socket type	Ringless
Mounting	Surface
Number of spaces	8
Number of circuits	16
Number of Tandem Breakers	8
Hub type	B300 A
Electrical connection	Lugs, line side Feed-thru lugs, service ground
Wire Size	AWG 6...300 kcmil aluminium/copper)line side AWG 6...AWG 1/0 aluminium/copper)service ground
Tightening torque	Main lugs 250 lb.in, AWG 6...300 kcmil, aluminium/copper Service ground 50 lb.in, AWG 14...AWG 1/0, copper Service ground 50 lb.in, AWG 12...AWG 1/0, aluminium Lugs 250 lb.in, AWG 6...250 kcmil, aluminium/copper Branch lugs 50 lb.in, AWG 3...AWG 1/0, aluminium/copper Branch lugs 45 lb.in, AWG 6...AWG 4, aluminium/copper Branch lugs 40 lb.in, AWG 8, aluminium/copper Branch lugs 35 lb.in, AWG 14...AWG 10, copper Branch lugs 35 lb.in, AWG 12...AWG 10, aluminium Cover 10 lb.in
Disconnect	Service disconnect (factory installed)
Main Breaker Rating	200 A
Branch Breaker Rating	100 A
Service feed location	OH UG
Bypass type	Horn bypass

Price is "List Price" and may be subject to a trade discount – check with your local distributor or retailer for actual price.

---

Height	34.00 in (863.60 mm)
Width	14.95 in (379.73 mm)
Depth	7.12 in (180.85 mm)
Bus Rating	200.0 A

---

## Environment

---

Product certifications	UL E-6294
------------------------	-----------

---

## Ordering and shipping details

---

Category	US1DE3A00048
Discount Schedule	DE3A
GTIN	785901863977
Returnability	Yes
Country of origin	MX

---

## Packing Units

---

Unit Type of Package 1	PCE
Nbr. of units in pkg.	1
Package 1 Height	8.100 in (20.574 cm)
Package 1 Width	15.300 in (38.862 cm)
Package 1 Length	33.600 in (85.344 cm)
Package weight(Lbs)	50.900 lb(US) (23.088 kg)
Unit Type of Package 2	PAL
Number of Units in Package 2	15
Package 2 Height	40.000 in (101.600 cm)
Package 2 Width	40.000 in (101.600 cm)
Package 2 Length	48.000 in (121.920 cm)
Package 2 Weight	775.999 lb(US) (351.987 kg)

---

## Contractual warranty

---

Warranty	18 months
----------	-----------

---



## Environmental Data

Schneider Electric aims to achieve Net Zero status by 2050 through supply chain partnerships, lower impact materials, and circularity via our ongoing “Use Better, Use Longer, Use Again” campaign to extend product lifetimes and recyclability.

[Environmental Data explained >](#)

[How we assess product sustainability >](#)

### Environmental footprint

[Environmental Disclosure](#)

[Product Environmental Profile](#)

## Use Better

### Materials and Substances

Packaging made with recycled cardboard

No

Packaging without single use plastic

No

[EU RoHS Directive](#)

Compliant with Exemptions

REACH Regulation

[REACH Declaration](#)

California proposition 65

**WARNING:** This product can expose you to chemicals including: Lead and lead compounds, which is known to the State of California to cause cancer and birth defects or other reproductive harm. For more information go to [www.P65Warnings.ca.gov](http://www.P65Warnings.ca.gov)

## Use Again

### Repack and remanufacture

Circularity Profile

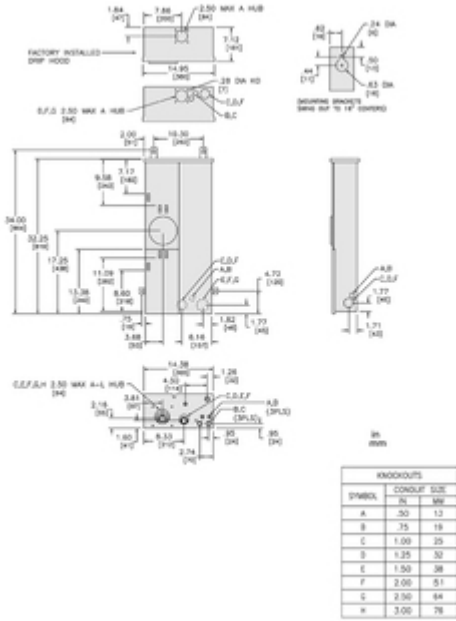
No need of specific recycling operations

Take-back

No

Technical Illustration

Dimensions



Technical Illustration

**Wiring diagram**

---