

# Product data sheet

Specifications

SQUARE D



Meter center, MP Meter-Pak, 6 sockets, no bypass, 4 jaws, 600A bus, 125A max breaker rating, ringed

MP66125

Product availability: Stock - Normally stocked in distribution facility

## Main

Product	Meter Center
Socket Rating	125 A
Main Type	Main Lugs
Number of Jaws	4
Number of Meter Sockets	6
Socket Type	Ringed

## Complementary

Main Rating	400 A 500 A
Bus Rating	600 A
Certifications	UL Listed
Type	Meter-Pak
Busbar Material	Aluminium: busbar
Bypass Type	No bypass
Enclosure Material	Steel
Enclosure Rating	NEMA 3R
Maximum Voltage Rating	120/240 V AC
Mounting	Surface
Phase	1 phase
Service Feed Location	UG OH
Wire Size	AWG 1/0...600 kcmil 1 aluminium AWG 1/0...600 kcmil 1 copper
Wire Configuration	3-wire

## Ordering and shipping details

Category	US10DE400021
Discount Schedule	0DE4
GTIN	785901001867
Returnability	Yes
Country of origin	MX

Price is "List Price" and may be subject to a trade discount – check with your local distributor or retailer for actual price.

## Packing Units

Unit Type of Package 1	PCE
Nbr. of units in pkg.	1
Package 1 Height	8.5 in (21.6 cm)
Package 1 Width	36.7 in (93.2 cm)
Package 1 Length	43.2 in (109.7 cm)
Package weight(Lbs)	128.999 lb(US) (58.513 kg)

## Contractual warranty

Warranty	18 months
----------	-----------




## Environmental Data


Schneider Electric aims to achieve Net Zero status by 2050 through supply chain partnerships, lower impact materials, and circularity via our ongoing “Use Better, Use Longer, Use Again” campaign to extend product lifetimes and recyclability.

[Environmental Data explained >](#)


[How we assess product sustainability >](#)

 <b>Environmental footprint</b>	
Carbon footprint (kg CO2 eq, Total Life cycle)	263
Environmental Disclosure	<a href="#">Product Environmental Profile</a>

### Use Better

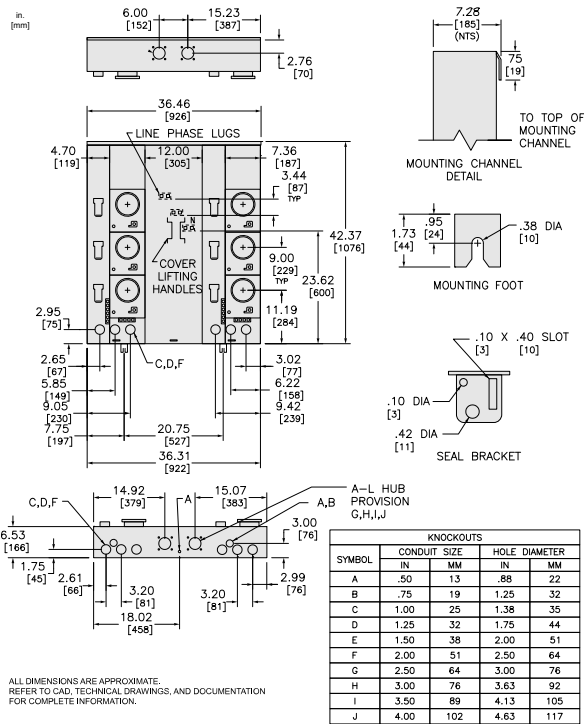
 <b>Materials and Substances</b>	
Packaging made with recycled cardboard	No
Packaging without single use plastic	No
<a href="#">EU RoHS Directive</a>	Compliant
REACH Regulation	<a href="#">REACH Declaration</a>
California proposition 65	<b>WARNING:</b> This product can expose you to chemicals including: Lead and lead compounds, which is known to the State of California to cause cancer and birth defects or other reproductive harm. For more information go to <a href="http://www.P65Warnings.ca.gov">www.P65Warnings.ca.gov</a>

### Use Again

 <b>Repack and remanufacture</b>	
Circularity Profile	No need of specific recycling operations
Take-back	No

Technical Illustration

Dimensions



Technical Illustration

Wiring diagram

---

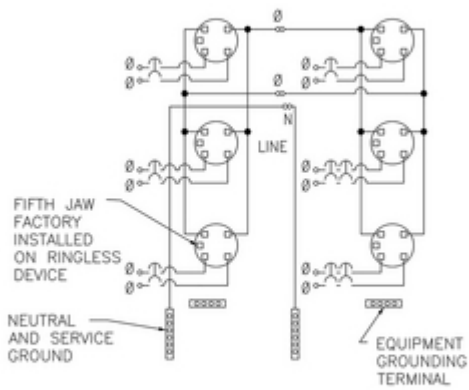


Image of product / Alternate images

Alternative

---

