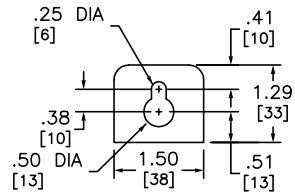
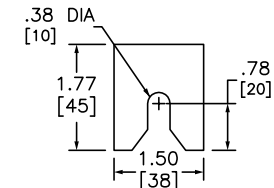


ADDITIONAL NOTES:
 WHEN USED AS SERVICE EQUIPMENT, INSTALL BONDING STRAP AND DISCARD EQUIPMENT GROUND LUG.
 ▲ THIS LUG IS AVAILABLE FROM SQUARE D. ORDER CATALOG NUMBER CMEK4, KIT INCLUDES 4 LUGS.

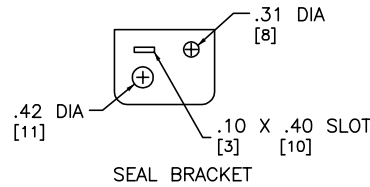
KNOCKOUTS		
SYMBOL	CONDUIT SIZE	
	IN	MM
A	.50	13
B	.75	19



TOP MOUNTING BRACKET



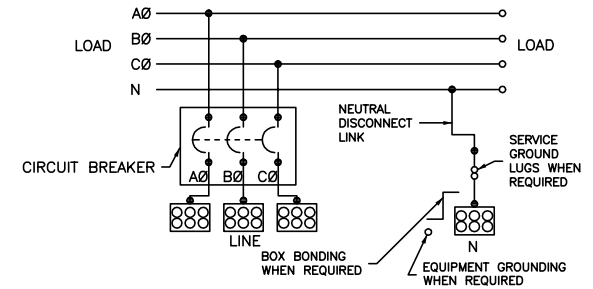
BOTTOM MOUNTING BRACKET



SEAL BRACKET

THE FOLLOWING LUGS MAY BE INSTALLED ON THE LINE LUG PADS.

MANUFACTURER	CATALOG NUMBER	WIRE RANGE, AWG/KCMIL	CRIMPING TOOL	TORQUE LB-IN
ANDERSON	VHCL50012BN	4/0-500 CU	VC63, VC7, VC6FT, VC7FT	--
ANDERSON	VHCL60012BN	250-600 CU	VC6FT, VC7FT, VC8	--
ANDERSON	VHCL75012BN	500-750 CU	VC6FT, VC7FT, VC8	--
ANDERSON	VACL50012BN	4/0-500 CU-AL	VC63, VC6FT	--
ANDERSON	VACL60012BN	350-600 AL/350-500 CU	VC6FT, VC8	--
ANDERSON	VACL75012BN	500-750 AL/500 CU	VC6FT, VC8	--
ANDERSON	VCEL05012H2	2/0-500 CU-AL	VC63, VC6FT	--
ANDERSON	VCEL06012H2	400-600 AL/400-500 CU	VC6FT	--
ANDERSON	VCEL07512H2	500-750 AL/500 CU	VC6FT	--
ANDERSON	VCELC05012H2	250-500 CU	VC63, VC7, VC6FT, VC7FT	--
IISCO	2ACL-600	250-600 CU-AL	IDT-12	--
IISCO	TA-600-2N▲	2-600 CU-AL	--	375
IISCO	TA-800-2N	300-800 CU-AL	--	500
IISCO	TA-1000-2N	500-1000 CU-AL	--	500
IISCO	PB2-600-2N	2-600 CU-AL	--	500
CMC	A1B2-600-2	2-600 CU-AL	--	375
CMC	L1D2-600	2-600 CU-AL	--	550
CMC	L1D2-800	300-800 CU-AL	--	550
CMC	L1D2-1000	500-1000 CU-AL	--	550
1/2-13 MOUNTING NUTS FOR LINE LUGS				375



DUAL DIMENSIONS: INCHES
MILLIMETERS

NOTES:
 FINISH - GRAY BAKED ENAMEL POWDER COAT PAINT OVER CLEANED GALVANNEALED STEEL.
 UL LISTED - FILE E131840, VOL. M
 SUITABLE FOR USE AS SERVICE EQUIPMENT.
 MAIN HORIZONTAL CROSS BUS RATED AT 1200A (ALUMINUM 1/4 X 2 1/2 TWO LAMINATIONS).
 MAIN DEVICES ARE SEALABLE BY UTILITY.
 GANGABLE MULTI-METERING EQUIPMENT IS DESIGNED FOR WALL MOUNTING ONLY.
 (NOT SUITABLE FOR FLOOR STANDING EQUIPMENT.)
 MEETS EUSERC STANDARDS FOR WEST COAST BASED UTILITIES. DRAWING 315

SYSTEM TYPE	MAIN RATING (AMPERES)	CATALOG NUMBER	MAIN CIRCUIT BREAKER (FACTORY INSTALLED) INTERRUPTING RATING 65kA @ 240V	LINE PHASE AND NEUTRAL LUG LANDING PADS PROVIDED FOR USE WITH CRIMP-TYPE LUGS(2-HOLE MOUNTING) QUANTITY OF LUGS PER PAD.	GROUND LUG WIRE RANGE (FACTORY INSTALLED)
3Ø 4W 208Y/120VAC OR 240/120VAC DELTA	1000	EZM31000CBU	PGF36100U31A (65kA)	3 (ORDER LUGS SEPARATELY)	(1) #6-300

EZ METER-PAK GANGABLE
 MULTI-METERING EQUIPMENT
 1000A 3PH 4W MAIN CIRCUIT BREAKER DEVICES
 UNDERGROUND FEED ONLY
 RAINPROOF NEMA TYPE 3R ENCLOSURES



DWG# PWFDS-SYRS-0192
 No.