

Product data sheet

Specifications

SQUARE D



Meter mains, QO, CSED, ringless socket, 400A, surface mount, maximum 12 spaces, Class 320 with lever bypass

QU12L400SL

⚠ To be discontinued

⚠ To be discontinued on: Dec 25, 2025

Product availability: Stock - Normally stocked in distribution facility

Main

Product or Component Type	Meter Mains
Range of Product	QO
Includes	Fifth jaw

Complementary

Line Rated Current	400 A
Short-circuit current	25 kA
Network number of phases	1
Meter socket type	Ringless
Mounting	Surface
Number of spaces	12
Number of circuits	0
Number of Tandem Breakers	0
Hub type	A-L
Electrical connection	Lugs, service ground Studs, line side
Wire Size	AWG 4...250 kcmil aluminium)service ground AWG 4...250 kcmil copper)service ground
Disconnect	Service disconnect (factory installed) Service disconnect (ordered separately)
Main Breaker Rating	200 A
Service feed location	UG
Bypass type	Class 320 lever bypass
Height	43.00 in (1092.20 mm)
Width	28.25 in (717.55 mm)
Depth	7.87 in (199.90 mm)
Bus Rating	200.0 A

Environment

Product certifications	UL E-6294
------------------------	-----------

Price is "List Price" and may be subject to a trade discount – check with your local distributor or retailer for actual price.

Ordering and shipping details

Category	US1DE3A00022
Discount Schedule	DE3A
GTIN	785901645993
Returnability	Yes
Country of origin	MX

Packing Units

Unit Type of Package 1	PCE
Nbr. of units in pkg.	1
Package 1 Height	9.61 in (24.4 cm)
Package 1 Width	29.41 in (74.7 cm)
Package 1 Length	42.20 in (107.2 cm)
Package weight(Lbs)	111.999 lb(US) (50.802 kg)

Contractual warranty

Warranty	18 months
----------	-----------

Environmental Data

Schneider Electric aims to achieve Net Zero status by 2050 through supply chain partnerships, lower impact materials, and circularity via our ongoing “Use Better, Use Longer, Use Again” campaign to extend product lifetimes and recyclability.

[Environmental Data explained >](#)

[How we assess product sustainability >](#)

Environmental footprint

[Environmental Disclosure](#)

[Product Environmental Profile](#)

Use Better

Materials and Substances

Packaging made with recycled cardboard

No

Packaging without single use plastic

No

[EU RoHS Directive](#)

Compliant with Exemptions

California proposition 65

WARNING: This product can expose you to chemicals including: lead and lead compounds, which is known to the State of California to cause cancer and birth defects or other reproductive harm. For more information go to www.P65Warnings.ca.gov

Use Again

Repack and remanufacture

Circularity Profile

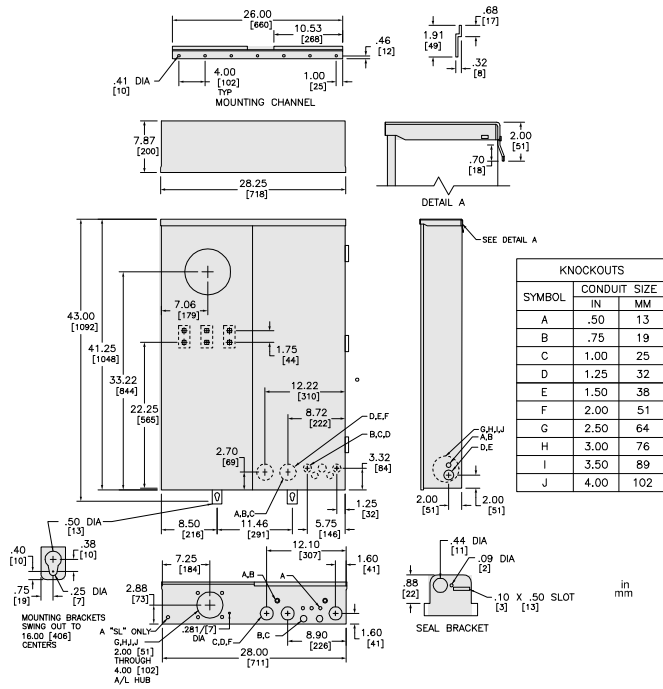
No need of specific recycling operations

Take-back

No

Technical Illustration

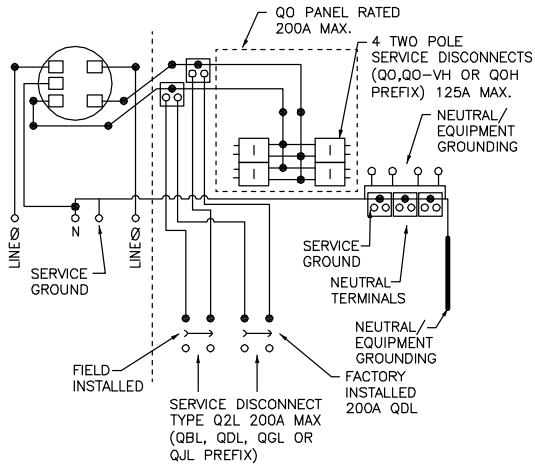
Dimensions

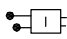


All dimensions are approximate. Also refer to technical documentation.

Technical Illustration

Wiring diagram



 TWO POLE TYPES QO, QOA OR QOC ONLY.
 INSTALL NO MORE THAN FOUR CIRCUIT BREAKERS.
 CIRCUIT BREAKER IS LIMITED TO 125 AMP MAX.

USE ONLY SQUARE D TYPE SERVICE DISCONNECTS WITH
 PREFIXES QO, QG, QD, QG OR QJ AND REPLACEMENT PARTS.
 WITH THIS PRODUCT. USE OF OTHER COMPONENTS VOIDS
 THE WARRANTY, MAY VOID THE UL LISTING AND MAY
 RESULT IN PROPERTY LOSS OR PERSONAL INJURY.

A SQUARE D UL LISTED SECONDARY SURGE
 ARRESTER MAY PLUG ON TWO ADJACENT
 SPACES. ORDER CATALOG NO QO2175SB.