

# Product data sheet

Specifications

SQUARE D



Load center, Homeline, 1 phase, 20 spaces, 40 circuits, 200A convertible main breaker, PoN, NEMA1, value pack

HOM2040M200PCVP

Product availability: Stock - Normally stocked in distribution facility

## Main

Product Type	Load Center
Marketing Trade Name	Homeline
Load Center Type	PoN Convertible Mains (breaker)
Rated Current	200 A
Number of Spaces	20
Maximum Number of Single Pole Circuits	40
Enclosure Rating	NEMA 1 indoor enclosure
Cover Type	Combination flush/surface cover
Electrical Connection	Lugs
Provided Equipment	Circuit-breaker 1) 2P 200 A 120/240 V CA main supply ready assembled Circuit-breaker 3) 1P 20 A 120/240 V CA Circuit-breaker 2) 2P 30 A 120/240 V CA

## Complementary

Max Short Circuit Current Rating	22 kA
Maximum Number of Tandem Breakers	20
Number of Phases	1 phase 3 wires
Voltage Rating	120/240 V AC
Wire Size	AWG 4...250 kcmil aluminium/copper
Ground Bar	Grounding bar (ordered separately)
Busbar Material	Tin plated aluminium: busbar
Enclosure Material	Welded sheet steel
Surface Finish	Baked enamel Gray
Box Number	9
Bus Rated Current	225.0 A
Height	29.8 in (758 mm)
Width	14.3 in (362 mm)
Depth	3.7 in (95 mm)

## Environment

Ambient Air Temperature for Operation	23 °F (-5 °C) 104 °F (40 °C)
---------------------------------------	---------------------------------

Price is "List Price" and may be subject to a trade discount – check with your local distributor or retailer for actual price.

---

Product Certifications	UL listed file E-6294
------------------------	-----------------------

## Ordering and shipping details

---

Category	US1DE3C00185
----------	--------------

---

Discount Schedule	DE3C
-------------------	------

---

GTIN	785901977063
------	--------------

---

Returnability	Yes
---------------	-----

---

Country of origin	US
-------------------	----

## Packing Units

---

Unit Type of Package 1	PCE
------------------------	-----

---

Nbr. of units in pkg.	1
-----------------------	---

---

Package 1 Height	16.20 in (41.148 cm)
------------------	----------------------

---

Package 1 Width	5.70 in (14.478 cm)
-----------------	---------------------

---

Package 1 Length	32.50 in (82.550 cm)
------------------	----------------------

---

Package weight(Lbs)	30.589 lb(US) (13.875 kg)
---------------------	---------------------------

---

Unit Type of Package 2	PAL
------------------------	-----

---

Number of Units in Package 2	18
------------------------------	----

---

Package 2 Height	40.00 in (101.600 cm)
------------------	-----------------------

---

Package 2 Width	42.00 in (106.680 cm)
-----------------	-----------------------

---

Package 2 Length	48.00 in (121.920 cm)
------------------	-----------------------

---

Package 2 Weight	584.999 lb(US) (265.351 kg)
------------------	-----------------------------

## Environmental Data

Schneider Electric aims to achieve Net Zero status by 2050 through supply chain partnerships, lower impact materials, and circularity via our ongoing “Use Better, Use Longer, Use Again” campaign to extend product lifetimes and recyclability.

[Environmental Data explained >](#)

[How we assess product sustainability >](#)

### Environmental footprint

Carbon footprint (kg CO2 eq, Total Life cycle) 73

Environmental Disclosure [Product Environmental Profile](#)

## Use Better

### Materials and Substances

Packaging made with recycled cardboard No

Packaging without single use plastic No

EU RoHS Directive Under investigation

REACH Regulation [REACH Declaration](#)

California proposition 65  
**WARNING:** This product can expose you to chemicals including: Lead and lead compounds, which is known to the State of California to cause cancer and birth defects or other reproductive harm. For more information go to [www.P65Warnings.ca.gov](http://www.P65Warnings.ca.gov)

## Use Again

### Repack and remanufacture

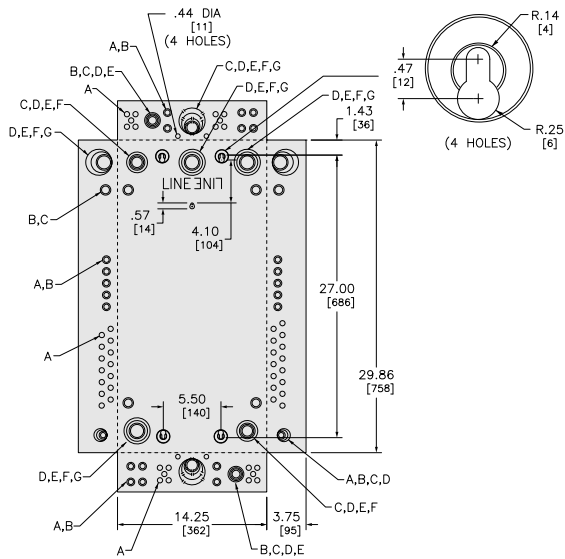
Circularity Profile No need of specific recycling operations

Take-back No

# Product data sheet HOM2040M200PCVP

## Technical Illustration

### Dimensions



		KNOCKOUTS						
	in.	A	B	C	D	E	F	G
	[mm]	.50	.75	1.00	1.25	1.50	2.00	2.50
		13	19	25	32	38	51	64

Dimensions are approximate. Refer to technical documentation for additional detail.

# Product data sheet    HOM2040M200PCVP

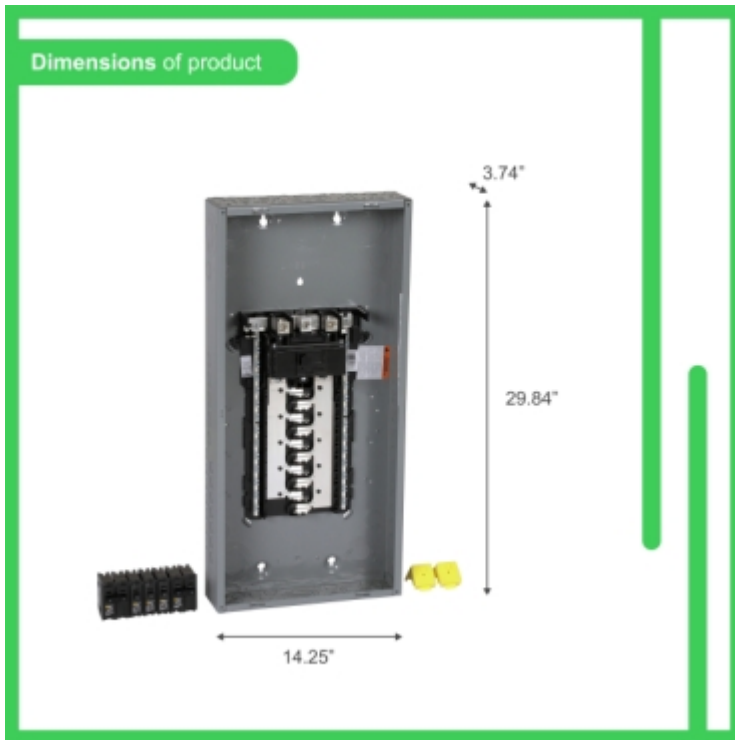
Technical Illustration

**Wiring diagram**

---

Image of product / Alternate images

Alternative



**200A**  
120/240 V- Max., 1Ø, 50/60 Hz.

**20** Spaces  
Espacios

**40** Circuits  
Circuitos

**Main Breaker**  
Interruptor Principal

**Indoor**  
Interior

INCLUDES INCLUIDOS



Surface / Flush  
Sobreponer /  
Empotrar  
**30.59 lbs / 13.88 kg**  
W14.2" x H29.9" x D3.8"