

Product data sheet

Specifications

SQUARE D



Main circuit breaker unit, EZ
Meter-Pak, 600A, 120/240VAC,
1ph/3W, 600A bus, 65kA, OH/UG,
Type 3R

EZM1600CB

Product availability: Stock - Normally stocked in distribution facility

Main

Range of Product	EZ meter-pak
Product or Component Type	Meter center main unit
Main type	Main Circuit Breaker
Included Items	Circuit-breaker 1) 2P 600 A 65 kA Closing plate

Complementary

Main rated current	600 A
Bus rated current	600 A
Enclosure Material	Painted steel
[Ue] rated operational voltage	120/240 V AC
Device mounting	Surface
Number of Phases	1 phase in 1 phase out
Service feed location	OH UG
Electrical connection	Lugs 1 AWG 6...300 kcmil aluminium/copper) ground Lugs 3 AWG 3/0...500 kcmil aluminium/copper) line Lugs 3 AWG 3/0...500 kcmil aluminium/copper) neutral
Wiring configuration	3-wire
Height	53.97 in (1370.84 mm)
Width	18.66 in (473.96 mm)
Depth	11.50 in (292.10 mm)

Environment

Product Certifications	UL Listed
Enclosure Rating	NEMA 3R

Ordering and shipping details

Category	US10DE400020
Discount Schedule	0DE4
GTIN	785901304647
Returnability	Yes

Price is "List Price" and may be subject to a trade discount – check with your local distributor or retailer for actual price.

Country of origin	MX
-------------------	----

Packing Units

Unit Type of Package 1	PCE
------------------------	-----

Nbr. of units in pkg.	1
-----------------------	---

Package 1 Height	14.21 in (36.1 cm)
------------------	--------------------

Package 1 Width	22.80 in (57.9 cm)
-----------------	--------------------

Package 1 Length	54.61 in (138.7 cm)
------------------	---------------------

Package weight(Lbs)	111.0006 lb(US) (50.349 kg)
---------------------	-----------------------------

Contractual warranty

Warranty	18 months
----------	-----------



Environmental Data

Schneider Electric aims to achieve Net Zero status by 2050 through supply chain partnerships, lower impact materials, and circularity via our ongoing “Use Better, Use Longer, Use Again” campaign to extend product lifetimes and recyclability.

[Environmental Data explained >](#)

[How we assess product sustainability >](#)

Environmental footprint

Carbon footprint (kg CO2 eq, Total Life cycle) 768

Environmental Disclosure [Product Environmental Profile](#)

Use Better

Materials and Substances

Packaging made with recycled cardboard No

Packaging without single use plastic No

[EU RoHS Directive](#) Compliant with Exemptions

REACH Regulation [REACH Declaration](#)

California proposition 65 **WARNING:** This product can expose you to chemicals including: Lead and lead compounds, which is known to the State of California to cause cancer and birth defects or other reproductive harm. For more information go to www.P65Warnings.ca.gov

Use Again

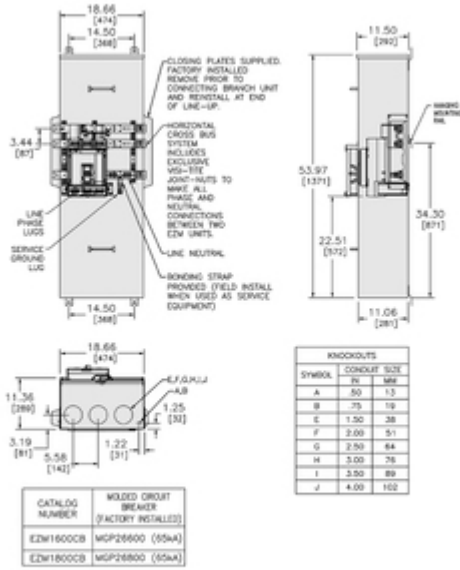
Repack and remanufacture

Circularity Profile No need of specific recycling operations

Take-back No

Technical Illustration

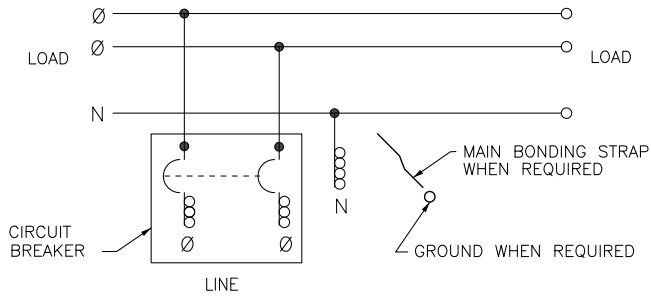
Dimensions



ALL DIMENSIONS ARE APPROXIMATE. FOR COMPLETE INFORMATION AND MOUNTING BRACKET DETAILS REFER TO TECHNICAL DRAWINGS AND DOCUMENTATION.

Technical Illustration

Wiring diagram



EZM1600CB
EZM1800CB