

Product data sheet

Specifications

SQUARE D



Meter mains, QO, CSED, ringed socket, 400A, surface mount, maximum 8 spaces, 16 circuits, Class 320 manual bypass

CU816D400CB

! To be discontinued

! To be discontinued on: Dec 25, 2025

Product availability: Stock - Normally stocked in distribution facility

Main

Product or Component Type	Meter Mains
Range of Product	QO

Complementary

Line Rated Current	400 A
Short-circuit current	25 kA
Network number of phases	1
Meter socket type	Ringed
Mounting	Surface Semi flush with field installed flange kit
Number of spaces	8
Number of circuits	16
Number of Tandem Breakers	8
Hub type	A-L
Electrical connection	Studs, line side Feed-thru lugs, service ground
Wire Size	AWG 4...250 kcmil aluminium)service ground AWG 4...250 kcmil copper)service ground
Disconnect	Service disconnect (factory installed)
Main Breaker Rating	200 A
Branch Breaker Rating	200 A
Service feed location	UG
Bypass type	Manual bypass Class 320
Height	43.00 in (1092.20 mm)
Width	28.25 in (717.55 mm)
Depth	7.87 in (199.90 mm)
Bus Rating	200.0 A

Environment

Product certifications	UL E-6294
------------------------	-----------

Price is "List Price" and may be subject to a trade discount – check with your local distributor or retailer for actual price.

Ordering and shipping details

Category	US1DE3A00022
Discount Schedule	DE3A
GTIN	785901583608
Returnability	Yes
Country of origin	MX

Packing Units

Unit Type of Package 1	PCE
Nbr. of units in pkg.	1
Package 1 Height	43.0 in (109.2 cm)
Package 1 Width	28.3 in (71.8 cm)
Package 1 Length	7.9 in (20.0 cm)
Package weight(Lbs)	1.120 lb(US) (0.508 kg)

Contractual warranty

Warranty	18 months
----------	-----------



Environmental Data

Schneider Electric aims to achieve Net Zero status by 2050 through supply chain partnerships, lower impact materials, and circularity via our ongoing “Use Better, Use Longer, Use Again” campaign to extend product lifetimes and recyclability.

[Environmental Data explained >](#)

[How we assess product sustainability >](#)

Environmental footprint

Carbon footprint (kg CO2 eq, Total Life cycle) 319

Environmental Disclosure [Product Environmental Profile](#)

Use Better

Materials and Substances

Packaging made with recycled cardboard No

Packaging without single use plastic No

[EU RoHS Directive](#) Compliant with Exemptions

REACH Regulation [REACH Declaration](#)

California proposition 65 **WARNING:** This product can expose you to chemicals including: Lead and lead compounds, which is known to the State of California to cause cancer and birth defects or other reproductive harm. For more information go to www.P65Warnings.ca.gov

Use Again

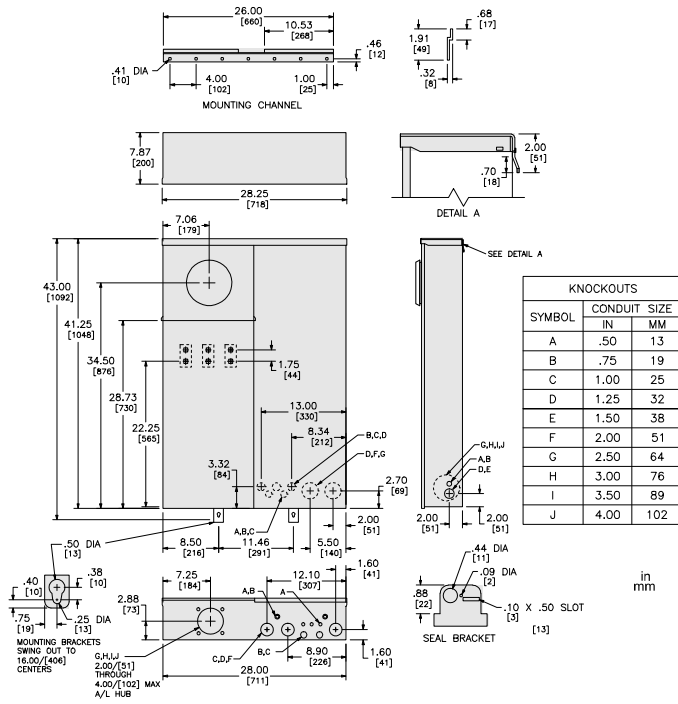
Repack and remanufacture

Circularity Profile No need of specific recycling operations

Take-back No

Technical Illustration

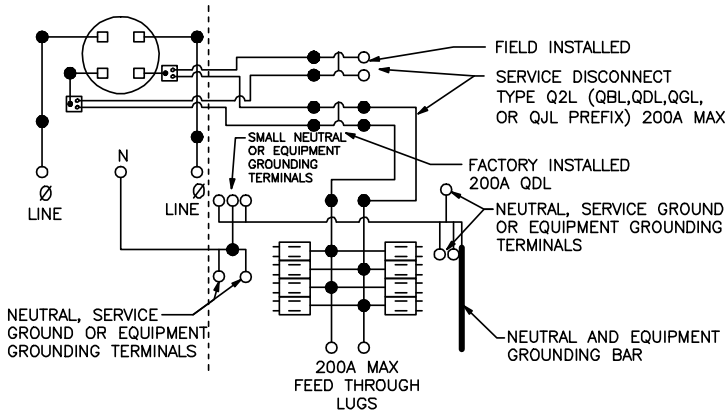
Dimensions

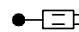


All dimensions are approximate. Also refer to technical documentation.

Technical Illustration

Wiring diagram



 TWO SINGLE POLE, ONE PLUG-ON SPACE TYPE QOT OR ONE SINGLE POLE TYPE QO. TWO POLE TYPE QO, QOA OR QOC(125A MAX.) MAY PLUG-ON TWO ADJACENT SPACES. TWO POLE TYPE QOC (150-200A MAX.) MAY PLUG-ON FOUR ADJACENT SPACES (RIGHT SIDE ONLY).