

Product data sheet

Specifications

SQUARE D



Mini circuit breaker, Homeline,
30A, 2 pole, 120/240VAC, 10kA
AIR, ground fault class A, plug in,
UL [TAA]

HOM230GFIC

Product availability: Stock - Normally stocked in distribution facility

Main

Product	Miniature circuit-breaker
Range	Homeline
Current Rating	30 A
Certifications	UL Listed
Voltage Rating	120/240 V AC
Mounting Type	Plug-in
Number of Poles	2P
Short Circuit Current Rating	10 kA
Number of Spaces	2
Circuit Breaker Type	Ground fault protecting class A 6 mA
Ratings	HACR rated
Electrical Connection	Screw clamp terminals
Wire Size	1 x AWG 12...AWG 4 (aluminium) 1 x AWG 14...AWG 6 (copper)
Type of Packing	Clam packaging

Complementary

Tightening torque	40.7 lbf.in (4.6 N.m) 0.004...0.02 in ² (2.5...10 mm ²) (AWG 16...AWG 14) 40.7 lbf.in (4.6 N.m) 0.006...0.03 in ² (4...20 mm ²) (AWG 12...AWG 4)
Height	3.13 in (79.50 mm)
Width	2 in (50.8 mm)
Depth	2.98 in (75.69 mm)

Environment

Ambient Air Temperature for Operation	104 °F (40 °C)
---------------------------------------	----------------

Ordering and shipping details

Category	US1DE3D00147
Discount Schedule	DE3D
GTIN	785901152873
Returnability	Yes
Country of origin	MX

Price is "List Price" and may be subject to a trade discount – check with your local distributor or retailer for actual price.

Packing Units

Unit Type of Package 1	PCE
Nbr. of units in pkg.	1
Package 1 Height	8.00 in (20.320 cm)
Package 1 Width	4.30 in (10.922 cm)
Package 1 Length	2.30 in (5.842 cm)
Package weight(Lbs)	19.360 oz (548.846 g)
Unit Type of Package 2	CAR
Number of Units in Package 2	3
Package 2 Height	4.80 in (12.192 cm)
Package 2 Width	7.00 in (17.780 cm)
Package 2 Length	8.50 in (21.590 cm)
Package 2 Weight	3.900 lb(US) (1.769 kg)

Compliance

Compliance	TAA
------------	-----



Environmental Data

Schneider Electric aims to achieve Net Zero status by 2050 through supply chain partnerships, lower impact materials, and circularity via our ongoing “Use Better, Use Longer, Use Again” campaign to extend product lifetimes and recyclability.

[Environmental Data explained >](#)

[How we assess product sustainability >](#)

Environmental footprint

Carbon footprint (kg CO2 eq, Total Life cycle) 42

Environmental Disclosure [Product Environmental Profile](#)

Use Better

Materials and Substances

Packaging made with recycled cardboard No

Packaging without single use plastic No

[EU RoHS Directive](#) Compliant with Exemptions

California proposition 65 **WARNING: This product can expose you to chemicals including: DINP, which is known to the State of California to cause cancer, and DIDP, which is known to the State of California to cause birth defects or other reproductive harm. For more information go to www.P65Warnings.ca.gov**

Halogen content performance Halogen free product

Use Again

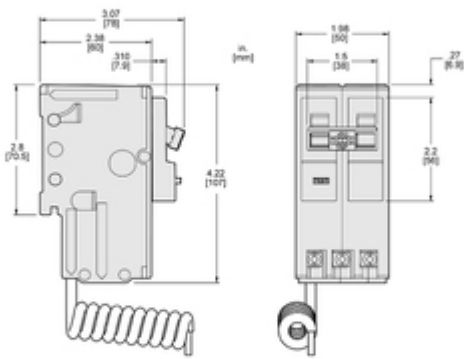
Repack and remanufacture

Circularity Profile [End of Life Information](#)

Take-back No

Technical Illustration

Dimensions



All dimensions are approximate.
Also refer to technical drawings and documentation.

Technical Illustration

Wiring diagram

Typical Wiring / Alambrado típico / Câblage typique

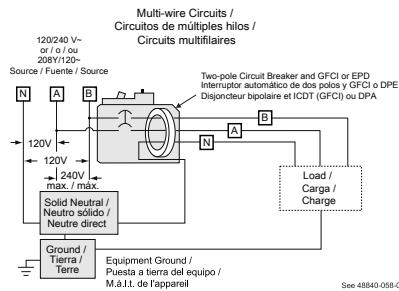
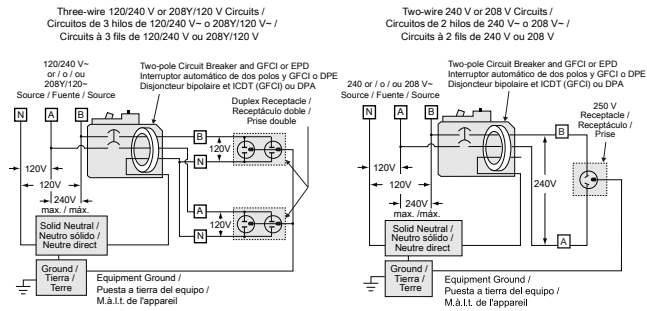


Image of product / Alternate images

Alternative

Technical Benefits
GFCI Circuit Breaker



-  Protects against overloads and short-circuits
-  For residential/commercial use to protect entire branch circuits
-  Product characteristics conformity is certified by the Underwriters Laboratories (UL)
-  The current capacity that this circuit breaker is able to interrupt before breaking is 10kA
-  Protection from overload, short-circuit, and Class A Ground Fault
-  Compatible with Homeline electrical panel and CSEDs with 2 spaces



Homeline™

HOM230GFIC

30A

120/240 VAC ~ 60 Hz
10,000 AIR/A nom.I

 **2 Poles**
Polos

 **Pigtail**
Cable
Neutro

 **Ground fault protection**
Protección para la fuga a tierra

-  Meets national code requirements for GFI
-  Ideal for wet and damp locations
-  UL943 Class A GFI - Shock Protection