

# Product data sheet

Specifications

SQUARE D



Safety switch, heavy duty, fusible,  
800A, 2 pole, 50hp, 240VAC/  
250VDC, NEMA 3R

H227R

**Product availability: Non-Stock - Not normally stocked in distribution facility**

## Main

Product	Single Throw Safety Switch
Duty Rating	Heavy duty
Device Application	Heavy application
Disconnect Type	Fusible disconnect
Factory Installed Neutral	None
Number of Poles	2
Current Rating	800 A
Voltage Rating	250 V DC 240 V AC
Enclosure Rating	NEMA 3R galvanized steel
Standard Motor Power Rating	50 hp at 240 V AC 50-60 Hz for 1 phase motors 50 hp at 250 V DC

## Complementary

Short-circuit current	200 kA maximum for L
Fuse type	L
Mounting Type	Surface
Electrical Connection	Lugs
Wiring configuration	2-wire
Wire Size	AWG 3/0...750 kcmil copper or aluminium
Tightening torque	375 lbf.in (42.4 N.m) 0.13...0.6 in <sup>2</sup> (85.01...380 mm <sup>2</sup> ) (AWG 3/0...750 kcmil)
Depth	17.75 in (450.85 mm)
Width	36.62 in (930.15 mm)
Height	69.13 in (1755.90 mm)
Net Weight	360.9 lb(US) (163.7 kg)

## Environment

Certifications	UL listed file E2875
----------------	----------------------

## Ordering and shipping details

Category	US10DE100054
Discount Schedule	0DE1
GTIN	785901259251

Price is "List Price" and may be subject to a trade discount – check with your local distributor or retailer for actual price.

---

Returnability	No
---------------	----

---

Country of origin	MX
-------------------	----

## Packing Units

---

Unit Type of Package 1	PCE
------------------------	-----

---

Nbr. of units in pkg.	1
-----------------------	---

## Contractual warranty

---

Warranty	18 months
----------	-----------



## Environmental Data

Schneider Electric aims to achieve Net Zero status by 2050 through supply chain partnerships, lower impact materials, and circularity via our ongoing “Use Better, Use Longer, Use Again” campaign to extend product lifetimes and recyclability.

[Environmental Data explained >](#)

[How we assess product sustainability >](#)

### Environmental footprint

Carbon footprint (kg CO2 eq, Total Life cycle) **731**

Environmental Disclosure [Product Environmental Profile](#)

## Use Better

### Materials and Substances

Packaging made with recycled cardboard **Yes**

Packaging without single use plastic **No**

[EU RoHS Directive](#) **Compliant with Exemptions**

REACH Regulation [REACH Declaration](#)

California proposition 65 **WARNING: This product can expose you to chemicals including: Lead and lead compounds, which is known to the State of California to cause cancer and birth defects or other reproductive harm. For more information go to [www.P65Warnings.ca.gov](http://www.P65Warnings.ca.gov)**

Halogen content performance **Halogen free plastic parts product**

PVC free **Yes**

## Use Again

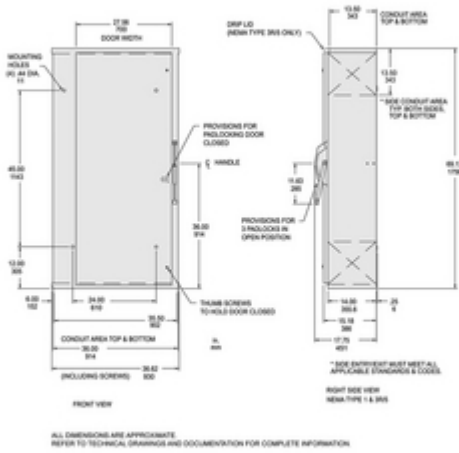
### Repack and remanufacture

Circularity Profile **No need of specific recycling operations**

Take-back **No**

Technical Illustration

Dimensions



Technical Illustration

Wiring diagram

---

