

Product data sheet

Specifications

SQUARE D



Safety switch, general duty, non fusible, 3 pole, 3 wire, 240VAC, 200A, Type 1

DU324

Product availability: Stock - Normally stocked in distribution facility

Main

Product	Single Throw Safety Switch
Duty Rating	General duty
Device Application	Residential
Disconnect Type	Non-fusible disconnect switch
Factory Installed Neutral	None
Number of Poles	3
Current Rating	200 A
Voltage Rating	240 V AC
Enclosure Rating NEMA	NEMA 1
Motor power hp	15 hp at 240 V AC 60 Hz for 1 phase motors 60 hp at 240 V AC 60 Hz for 3 phase motors

Complementary

Mounting Type	Surface
Electrical Connection	Lugs
Wiring configuration	3-wire
Wire Size	AWG 6...250 kcmil aluminium/copper
Tightening torque	275 lbf.in (31.07 N.m) (AWG 6...250 kcmil)
Depth	8.25 in (209.55 mm)
Width	19 in (482.6 mm)
Height	29 in (736.6 mm)
Net Weight	52.007 lb(US) (23.59 kg)

Environment

Certifications	UL listed file E2875
----------------	----------------------

Ordering and shipping details

Category	US1DE1A00006
Discount Schedule	DE1A
GTIN	785901491866
Returnability	Yes
Country of origin	US

Price is "List Price" and may be subject to a trade discount – check with your local distributor or retailer for actual price.

Packing Units

Unit Type of Package 1	PCE
Nbr. of units in pkg.	1
Package 1 Height	8.50 in (21.590 cm)
Package 1 Width	19.40 in (49.276 cm)
Package 1 Length	30.70 in (77.978 cm)
Package weight(Lbs)	39.899 lb(US) (18.098 kg)
Unit Type of Package 2	PAL
Number of Units in Package 2	8
Package 2 Height	40.00 in (101.600 cm)
Package 2 Width	40.00 in (101.600 cm)
Package 2 Length	48.00 in (121.920 cm)
Package 2 Weight	359.199 lb(US) (162.930 kg)

Contractual warranty

Warranty	18 months
----------	-----------



Environmental Data

Schneider Electric aims to achieve Net Zero status by 2050 through supply chain partnerships, lower impact materials, and circularity via our ongoing “Use Better, Use Longer, Use Again” campaign to extend product lifetimes and recyclability.

[Environmental Data explained >](#)

[How we assess product sustainability >](#)

Environmental footprint	
Carbon footprint (kg CO2 eq, Total Life cycle)	190
Environmental Disclosure	Product Environmental Profile

Use Better

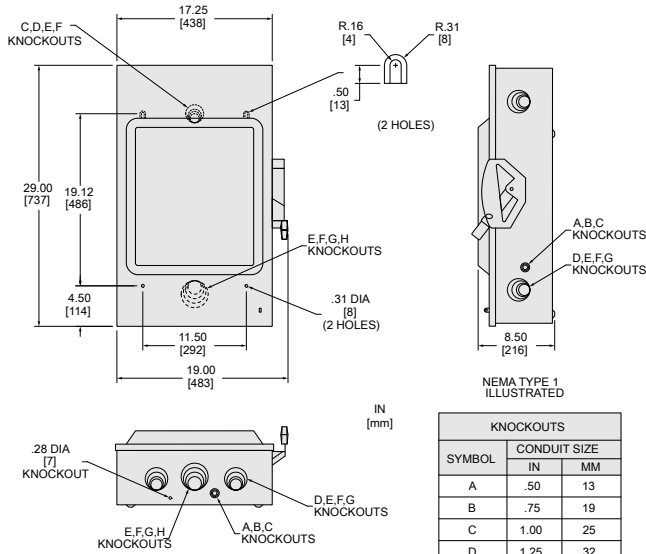
Materials and Substances	
Packaging made with recycled cardboard	Yes
Packaging without single use plastic	Yes
EU RoHS Directive	Compliant
California proposition 65	WARNING: This product can expose you to chemicals including: Lead and lead compounds, which is known to the State of California to cause cancer and birth defects or other reproductive harm. For more information go to www.P65Warnings.ca.gov
PVC free	Yes

Use Again

Repack and remanufacture	
Circularity Profile	No need of specific recycling operations
Take-back	No

Technical Illustration

Dimensions



NEMA TYPE 1 ILLUSTRATED

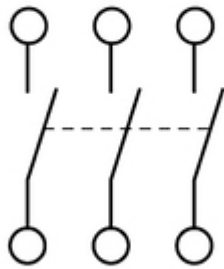
SYMBOL	CONDUIT SIZE	
	IN	MM
A	.50	13
B	.75	19
C	1.00	25
D	1.25	32
E	1.50	38
F	2.00	51
G	2.50	64
H	3.00	76

ALL DIMENSIONS ARE APPROXIMATE
REFER TO TECHNICAL DRAWINGS AND DOCUMENTATION

Technical Illustration

Wiring diagram

NOT FUSIBLE



DU324