

# Product data sheet

Specifications

SQUARE D



Circuit breaker enclosure,  
PowerPacT H, 15 to 150A, 2 pole,  
surface mount, NEMA 1

H150S

Product availability: Stock - Normally stocked in distribution facility

## Main

|                           |             |
|---------------------------|-------------|
| Product name              | PowerPacT H |
| Product or Component Type | Enclosure   |
| Circuit breaker type      | HDL<br>HGL  |

## Complementary

|                      |                           |
|----------------------|---------------------------|
| Number of poles      | 2                         |
| Line Rated Current   | 15...100 A<br>125...150 A |
| Type of Installation | Indendørs                 |

## Environment

|                        |        |
|------------------------|--------|
| Product Certifications | NEMA 1 |
|------------------------|--------|

## Ordering and shipping details

|                   |              |
|-------------------|--------------|
| Category          | US10DE100030 |
| Discount Schedule | 0DE1         |
| GTIN              | 785901984832 |
| Returnability     | Yes          |
| Country of origin | MX           |

## Packing Units

|                              |                         |
|------------------------------|-------------------------|
| Unit Type of Package 1       | PCE                     |
| Nbr. of units in pkg.        | 1                       |
| Package 1 Height             | 6.50 in (16.5 cm)       |
| Package 1 Width              | 15.39 in (39.1 cm)      |
| Package 1 Length             | 33.19 in (84.3 cm)      |
| Package weight(Lbs)          | 36.46 lb(US) (16.54 kg) |
| Unit Type of Package 2       | PAL                     |
| Number of Units in Package 2 | 16                      |
| Package 2 Height             | 40.00 in (101.6 cm)     |
| Package 2 Width              | 42.00 in (106.68 cm)    |
| Package 2 Length             | 48.00 in (121.92 cm)    |

Price is "List Price" and may be subject to a trade discount – check with your local distributor or retailer for actual price.

---

**Package 2 Weight**

615.55 lb(US) (279.21 kg)



## Environmental Data

Schneider Electric aims to achieve Net Zero status by 2050 through supply chain partnerships, lower impact materials, and circularity via our ongoing “Use Better, Use Longer, Use Again” campaign to extend product lifetimes and recyclability.

[Environmental Data explained >](#)

[How we assess product sustainability >](#)

### Environmental footprint

[Environmental Disclosure](#)

[Product Environmental Profile](#)

## Use Better

### Materials and Substances

Packaging made with recycled cardboard

No

Packaging without single use plastic

No

[EU RoHS Directive](#)

Compliant

REACH Regulation

[REACH Declaration](#)

California proposition 65

**WARNING:** This product can expose you to chemicals including: Lead and lead compounds, which is known to the State of California to cause cancer and birth defects or other reproductive harm. For more information go to [www.P65Warnings.ca.gov](http://www.P65Warnings.ca.gov)

Halogen content performance

Halogen free plastic parts product

PVC free

Yes

## Use Again

### Repack and remanufacture

Circularity Profile

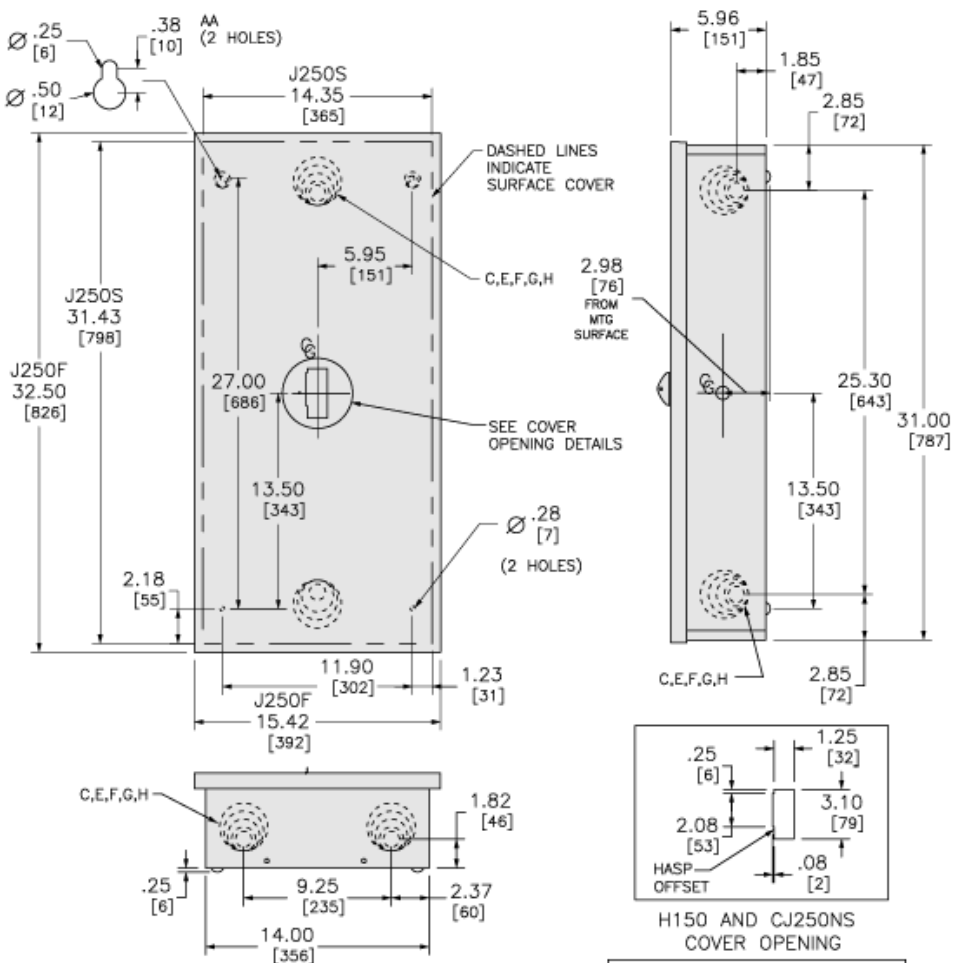
No need of specific recycling operations

Take-back

No

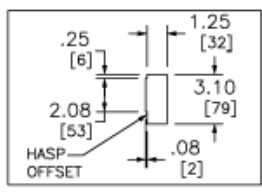
Dimensions Drawings

Approximate Dimensions: Refer to Drawing 3362S

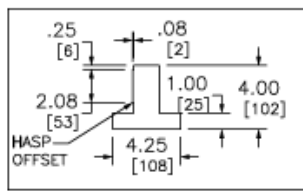


IN  
[MM]

| SYMBOL | KNOCKOUTS    |    |          |    |
|--------|--------------|----|----------|----|
|        | CONDUIT SIZE |    | DIAMETER |    |
|        | IN           | MM | IN       | MM |
| C      | 1.00         | 25 | 1.38     | 35 |
| E      | 1.50         | 38 | 2.00     | 51 |
| F      | 2.00         | 51 | 2.50     | 64 |
| G      | 2.50         | 64 | 3.00     | 76 |
| H      | 3.00         | 76 | 3.63     | 92 |



H150 AND CJ250NS  
COVER OPENING



J250 COVER OPENING  
WITH TRIP SETTING ACCESS