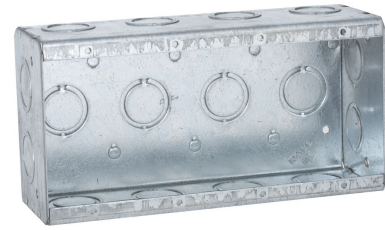




4-Gang Masonry Box, Nongangable, 2-1/2 in. Deep, Sixteen Concentric KO's

By RACO
Catalog # 693



4-Gang Masonry Box, Nongangable, 2-1/2 in. Deep, Sixteen Concentric KO's

Features

- Rugged welded design does not fall apart during construction.
- Available from one to six gang configurations in both 2-1/2" and 3-1/2" depths.
- Rectangular shape fits square cuts in block.
- Large volume design allows for additional work room inside the box.
- Standard 1/2" and 3/4" concentric knockouts.
- Device ears inside the box prevent mortar from getting in the device holes.
- Steel voltage partition #971 fits all 2-1/2" or 3-1/2" depths.
- Standard wall plates can be used.

Specifications

Certified Listed	UL Listed
Buy American Compliant	No
EU RoHS Indicator	Contact Manufacturer

Configuration

Knockouts	1/2 - 3/4 in Concentric
Bracket Type	No Bracket
Number of Gang(s)	4-Gang
Gangable	No

Dimensions

Cubic Capacity	63.5 cu.in
Depth	2.5 in
Width	7.406 in
Weight	1.581 lb.
Height	3.7506 in

General

Wiring System	Conduit
Type	Box
Material	Steel
Drawn or Welded	Welded
UPC	050169006931

Logistics

Packaging Type	No Packaging
Carton Quantity	10
Pallet Quantity	800

Product Assets

- [Catalog \[English\]](#)
- [Catalog \[English\]](#)