



Product description Octave Alto Data Management 2025

25 February 2026

Page 1/9

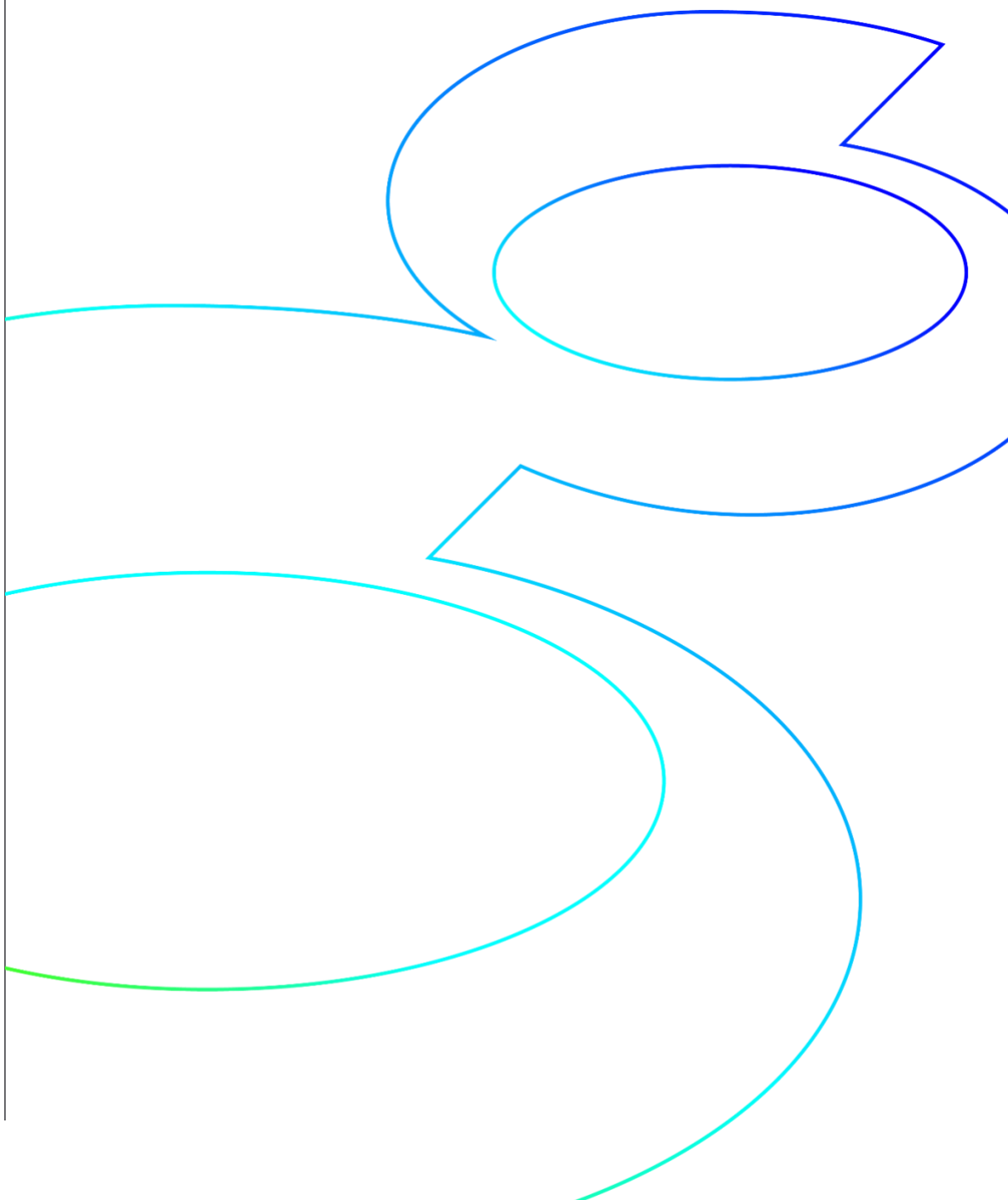


Table of contents

Introduction **3**

License tiers **4**

 Alto Data Management Essentials 4

 Alto Data Management Advantage 4

 Alto Data Management Professional 4

Feature availability **5**

 Installation packages 6

Catalog Explorer: Integrated web client **8**

About Octave **9**

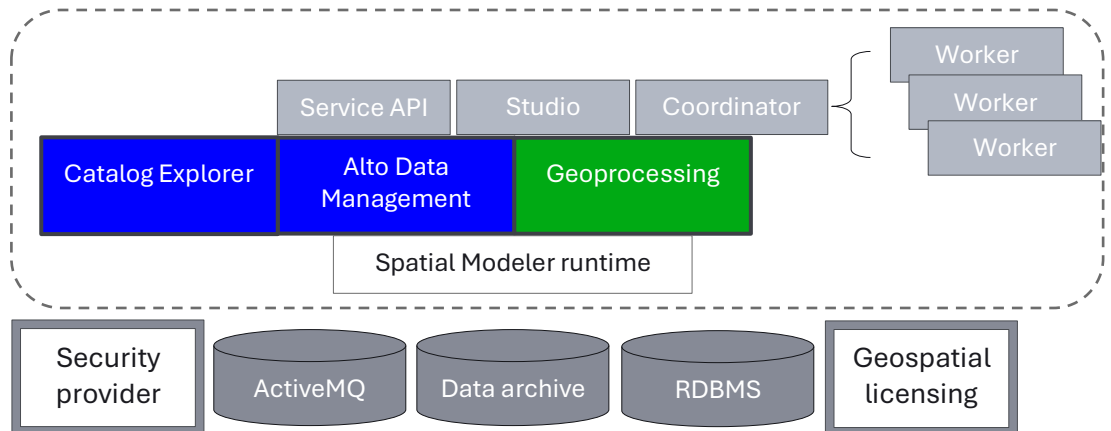
Introduction

Octave Alto Data Management (formerly ERDAS APOLLO) provides a comprehensive data management server solution that helps identify, locate, secure and organize your geospatial and related business data into a searchable, secured repository while enabling simple distribution through interoperable web services.

Alto Data Management also alleviates pressures associated with optimizing spatial data archive storage requirements through the use of Octave's industry-leading ECW image compression and HSPC point cloud storage technology. Wherever possible, Alto Data Management aims to read data as-is with no conversion based on other best-of-breed, industry-format standards.

Page 3/9

Alto Data Management 2025 included a substantial rearchitecture of the product to integrate and standardize on Octave Alto Server (formerly LuciadFusion) platform. This release substantially enhances previous capabilities as well as simplifies deployment, administration and other workflows. Alto Data Management 2025 also supports the Linux operating environment. Feature availability has also changed, for further details please refer to the Alto Data Management [release guide](#) or contact your local Octave representative.



License tiers

Alto Data Management Essentials

Essentials is the perfect solution for organizations that require an enterprise solution to make sense of their traditional spatial data archive. Building on Alto Data Management Essentials' history of rapid imagery services, beginning with 2023, the Essentials tier now services an expanded target market covering all traditional spatial data types with a robust catalog and security model with matching web service delivery options. The expanded Alto Data Management Studio Web Administrator is now available across all tiers, enabling rapid administration and control. Essentials is an ideal starter solution for customers seeking a catalog with distribution capabilities for traditional 2D raster or vector data sources.

Page 4/9

Alto Data Management Advantage

Advantage takes things to the third dimension by adding point clouds, 3D meshes and BIM/CAD data types to the catalog model. It also expands support from the traditional file-based data types to cover spatial data residing in databases such as Microsoft SQL Server, PostgreSQL and Oracle, among others. Defense industry users also gain support for VPF, MGCP and other defense-aligned formats and visualization standards. Additionally, 360-degree panoramic imagery is now supported from E57 or Hexagon's Leica Pegasus sensors. All these data types inherit the foundational workflow and security model introduced with Alto Data Management Essentials. These data formats are discovered seamlessly through automatic data crawlers to locate, insert and extract metadata.

Alto Data Management Professional

Professional provides a powerful server-side geoprocessing solution for geospatial data, employing complex algorithms that underpin the engine within Octave Imagine (formerly ERDAS IMAGINE) or Octave GeoMedia (formerly GeoMedia). Geospatial analysts create custom models using these desktop expert tools and publish them to the Geoprocessing Server to enable execution on demand by other users. As of v2023, the Data Extraction Service builds on the Geoprocessing execution model to provide expanded capabilities, no longer limited to just the raster domain.

Feature availability

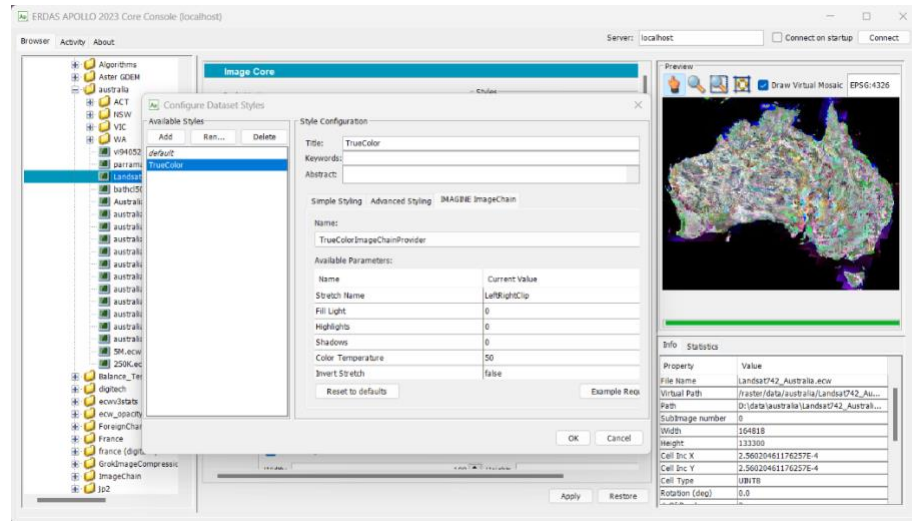
Alto Data Management License tier	V2025
Professional	Geoprocessing Data Extraction Service (DES) Maritime Standards Aviation Standards
Advantage	Point cloud catalog and visualization Panoramic imagery 3D Mesh BIM Defense Standards and Symbology CAD Vector database OGC 3D Tiles HSPC LTS Download Service
Essentials	Catalog Vector Raster Security AOI Notification Catalog Explorer Web administration Metadata parsers and Editor Raster and Vector Style Creator OGC WMS, WCS, WMTS, WFS(T), GML and KML ECWP OGC API Records REST API

Installation packages

Alto Data Management is available in two installation packages.

Alto Data Management ¹	Alto Data Management Core ²
The complete package including all components and features	Streamlined installer focused on advanced imagery delivery only
Windows and Linux versions are supported	Windows and Linux versions are supported

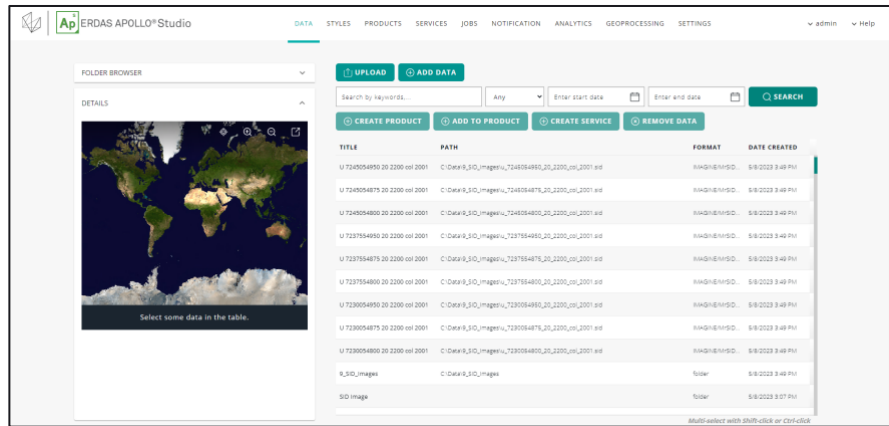
For new customers, the Alto Data Management suite installer is recommended for all functional capabilities unless they have very specific raster delivery needs. Alto Data Management Core is no longer included in the main package to simplify architecture through various technology integration work completed in v2023.



Configure raster data within the Alto Data Management Core Console.

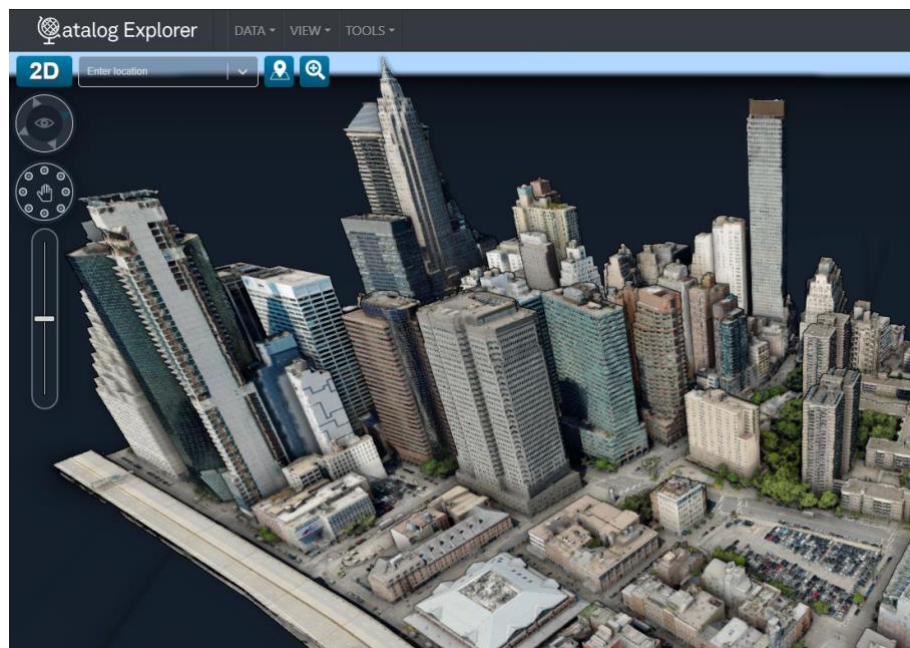
¹ Previously known as ERDAS APOLLO Advantage/Professional

² Previously known as ERDAS APOLLO Essentials / Image Web Server



Or configure all datatypes within the Alto Data Management Studio web administrator.

Starting with v2023, a separate Data Pack with an assortment of sample data across New York City and Melbourne, Australia, is now available to help onboard new customers and demonstrate key workflows. Data includes vector, raster, panoramic, 3D tiles and point cloud data types collected from Octave sensor solutions.



Example NYC 3D sample dataset delivered via Alto Data Management

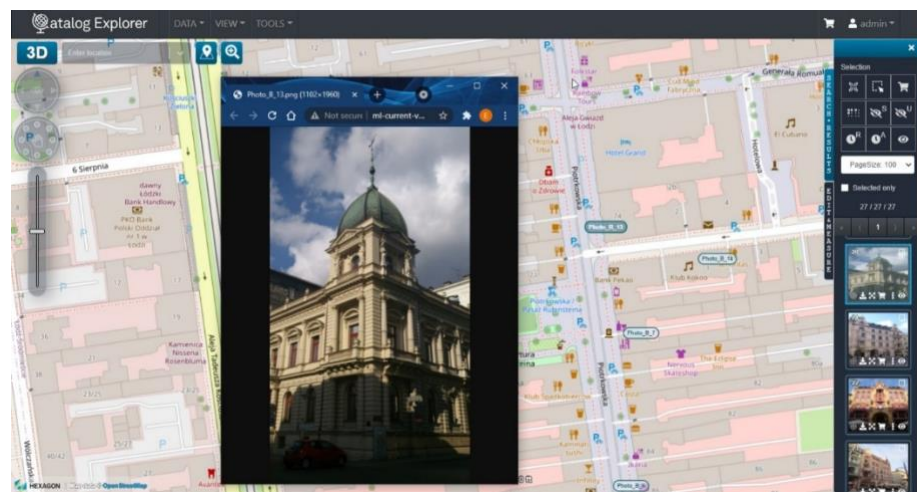
Catalog Explorer: Integrated web client

Catalog Explorer is a configurable browser-based web portal that can be used for locating, viewing, querying, and analyzing geospatial data published by Octave products and/or other standard web services. Using modern services-oriented and RESTful architectures, you can connect to many data sources at the same time.

Catalog Explorer integrates multiple data sources into a single map view, providing easy navigation and interaction.

The Catalog Explorer web client experience builds around the catalog search to provide other features such as a gazetteer, robust OGC API Web Service support, and integration of the Alto Data Management Geoprocessing Server capability.

Page 8/9



Catalog Explorer can be used to connect to Alto Data Management to browse and search the catalog, consume and view data and services, download and clip datasets, and create value-added data products on-demand.

Catalog Explorer is used to connect to Alto Data Management Essentials, Advantage and Professional for operations including consuming services, browsing and searching the catalog, downloading datasets, and server-side geoprocessing (Professional version only).

About Octave

Octave is a leader in enterprise software, turning data into decisive action and intelligence into your edge. Our software solves for and simplifies complexity, from the design and build to operations and protection of people, property and assets – for any scope, at any scale. For decades, we’ve partnered with customers to sharpen performance, elevate efficiency and amplify results. From factory floors to entire cities, our solutions are tuned to scale up what’s possible from day one onward.

Copyright

Page 9/9

©2026 Intergraph Corporation and/or its affiliates. All rights reserved.