



BROCHURE

Octave GeoMedia

Flexible and dynamic GIS management





Octave GeoMedia

Whether updating land and tax records, analyzing traffic flow and crashes or determining the best locations for evacuation centers, you can use Octave GeoMedia (formerly GeoMedia) to combine tabular and geographic data to produce actionable information.

GeoMedia is a powerful, flexible GIS management platform that lets you aggregate data from a variety of sources and analyze it in unison to extract clear, actionable information. It provides simultaneous access to geospatial data in almost any form and displays it in a single unified map view for efficient processing, analysis, presentation and sharing. GeoMedia's functionality makes it ideal for extracting information from an array of dynamically changing data to support informed, smarter decision-making.

Superior data access

GeoMedia allows you to focus on your data and what you want to achieve with it. It is a leading GIS choice among users who want to connect directly to the spatially enabled databases they already use — such as Oracle, Microsoft SQL Server and PostGIS — without using importers or converters.

GeoMedia can access a wide range of geospatial, CAD and OGC formats and web services — as well as third-party basemaps and 3D data — providing essential context for all other geospatial information within the platform.

GeoMedia also includes Octave Alto Data Management Catalog Explorer (formerly ERDAS APOLLO Catalog Explorer) to spatially search, find and display image data directly in the map window.



As information changes in your data sources, so does the analysis in your GeoMedia GeoWorkspace. Simply refresh and all the analyses are dynamically updated. No need to go back and redo the work.

Data visualization and quality assurance

GeoMedia offers a multitude of options for ensuring the data you add to your GIS is high quality, and it remains that way during its lifespan.

GeoMedia streamlines the loading of large datasets into your enterprise database by validating completeness, enforcing your organization's data model. It can integrate multiple sources with different schemas into a single, high-quality dataset.

Once data has been incorporated, GeoMedia monitors changes, allowing you to see specific changes made by users and establish a quality assurance checkpoint. It also facilitates resolution of any conflicting or ambiguous changes.

GeoMedia provides smart feature modeling capabilities that recognize the relationships between features that represent real-world objects in a network, such as sewer, water, electric or gas assets. By recognizing those relationships during the editing process, GeoMedia increases operator productivity and helps ensure edits are consistent with real-world business rules. It also provides temporal query and visualization capabilities that let you pinpoint network changes that have occurred over time and analyze the possible causes and real-world implications.



3D data provides context to other geospatial information inside GeoMedia.

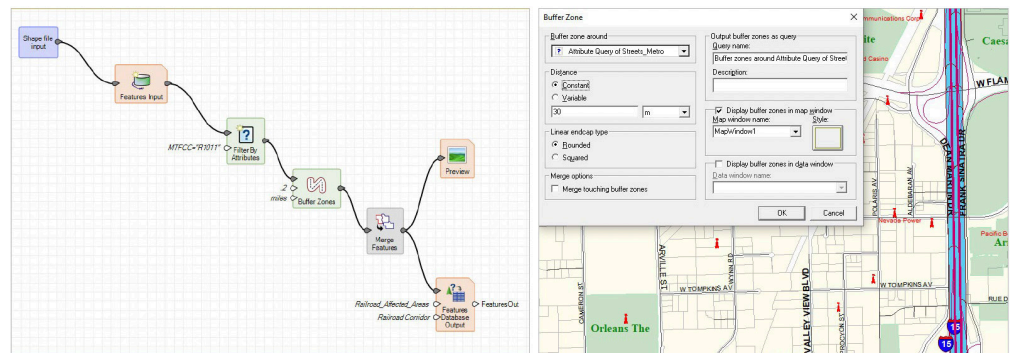
Sophisticated, dynamic analysis

GeoMedia enables sophisticated analysis across data stored in multiple databases, platforms and file types simultaneously. It supports unlimited dynamically linked queries, allowing the results of one query to feed directly into another. As underlying data changes, GeoMedia automatically updates outputs, giving you a living, accurate picture of real-world conditions and supporting powerful “what-if” analyses for strategic planning.

Other GIS platforms may offer similar chained analysis, but they often rely on temporary intermediate files. Because these files do not update when source data changes, results quickly become outdated and require you to rerun the entire analysis. GeoMedia’s dynamic approach eliminates this limitation.

These analytic strengths make GeoMedia ideal for managing linear networks such as roads, railways, transit systems, pipelines and waterways. It tracks network information, supports advanced analyses for public safety, maintenance prioritization and budgeting, and handles both single and multilevel linear referencing systems. Its multilevel linear referenced system (MLRS) synchronizes multiple geometric representations of a network with event data to ensure consistent and reliable results.

GeoMedia also provides fast and accurate geocoding worldwide using rooftop and centerline models to precisely locate addresses within your street network. It supports a broad range of global coordinate reference systems and performs smooth, on-the-fly vector and raster transformations to the projection you choose.



Execute 64-bit spatial models within GeoMedia using the Run Spatial Model command. Rerun the same model from the Explorer Window to refresh your results.

Spatial Modeler in GeoMedia

Octave Imagine Spatial Modeler (formerly ERDAS IMAGINE Spatial Modeler), is used for to visually author simple-to-complex workflows via raster and feature operations. It, is also included with GeoMedia. Many capabilities — including some only available through GeoMedia or GeoMedia Image commands — can now be executed in Spatial Modeler to process files, data or other information that once required programming or custom GeoMedia commands.

Enterprise productivity

Productivity and accuracy are essential aspects of vector feature capture and editing for enterprise geospatial databases. GeoMedia provides focused functionality for the creation, manipulation and maintenance of geospatial information. It supports the essential, day-to-day operations required to maintain map information.

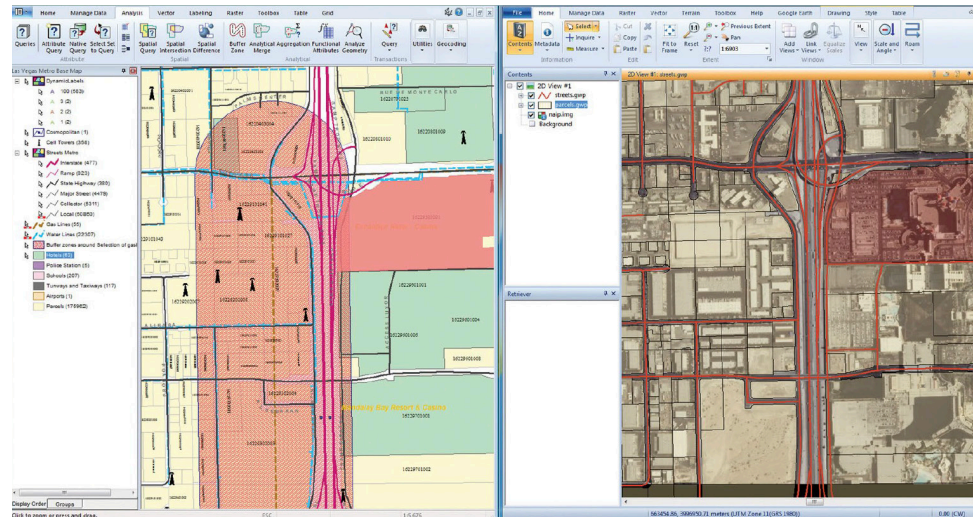
GeoMedia makes it easy for organizations with many users to work with data productively. You can easily share geospatial content inside a department or enterprise. If your department has standards for styling, text properties or structured analysis and queries, a supervisor can ensure consistency throughout the group by specifying those standards and queries, centralizing and sharing them.



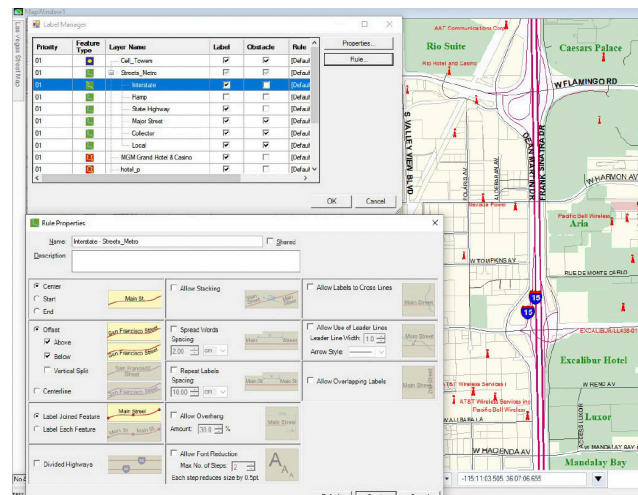
Customizable

GeoMedia's easy-to-use graphical user interface is well organized and streamlined to minimize mouse movement and button clicks, increasing productivity and reducing costs.

GeoMedia lets you modify and customize aspects of the interface, which makes it easier to optimize specific workflows. Individuals can tailor the user interface to their needs by hiding elements to declutter the workspace and make tools and functions easier to find and use.



Departments of transportation (DOTs) can efficiently analyze their transportation infrastructure with GeoMedia.



With GeoMedia it is easy to manage the placement and appearance of labels using a variety of rules in either a static or dynamic format.

Flexible offering

GeoMedia is available in three product tiers, so you can acquire the specific functionality you need. Tiers make it easy for you to adjust the scope of the software to match your GIS management needs, analysis requirements and budget.

GeoMedia Essentials

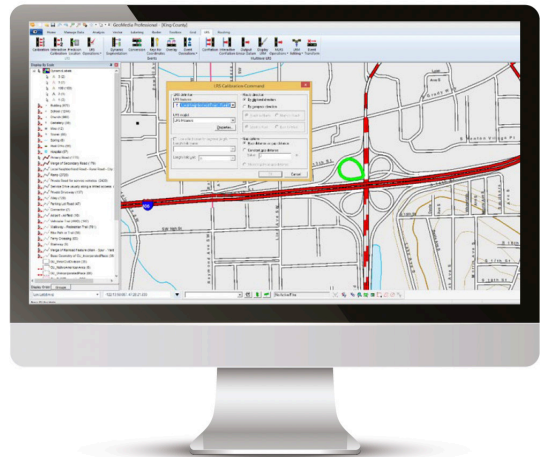
Query and analyze a wide variety of geospatial data sources and formats with GeoMedia Essentials for dynamic, ad hoc analysis and high-fidelity rendering of vector feature data.

GeoMedia Advantage

Building on all the functionality of GeoMedia Essentials, GeoMedia Advantage is excellent for data collection and editing and for processing and analyzing elevation and terrain data, including LiDAR. It includes data validation and sophisticated raster analysis tools, such as Insert Area by Face, Insert Interactive Area by Face, Dimensions and Insert Dimensions.

GeoMedia Professional

GeoMedia Professional includes all the features of the Essentials and Advantage tiers plus enterprisewide, multiuser data management and analysis. Manage linear networks, produce professional cartographic maps, conduct advanced feature editing, manage parcel holdings, conduct utility network analysis, monitor and control changes, integrate data from multiple sources, design and use spatial models and assure overall data quality with GeoMedia Professional.



The LRS/MLRS capabilities within Octave GeoMedia Transportation Manager (formerly GeoMedia Transportation Manager) let you join, merge and create location information from many different source references, all managed in one database and within one feature set.

GeoMedia lets you modify and customize aspects of your interface, which makes it easier to optimize specific workflows.

One connected solution

GeoMedia connects Octave's industry-leading suite of GIS, remote sensing, photogrammetry and geospatial data management solutions for a seamless, complete solution to geo-enable your enterprise.

Product and interaction

Work on photogrammetry projects directly in GeoMedia with ImageStation Stereo for GeoMedia, ImageStation DTM for GeoMedia, ImageStation OrthoPro and ImageStation PixelQue.

Link to a GeoMedia environment from the Octave Imagine (formerly ERDAS IMAGINE) interface to synchronize navigation and Area of Interest.

Enhance imagery in Imagine before bringing it into GeoMedia.

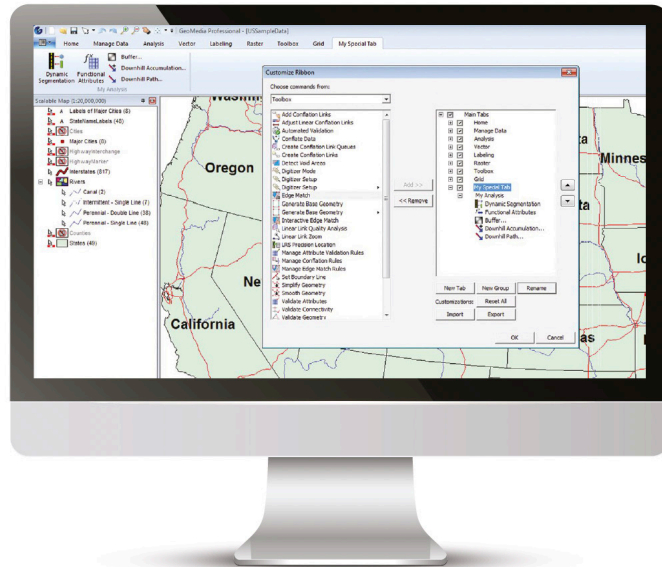
Share spatial models between Imagine and GeoMedia.

Move data easily between the different remote sensing and GIS packages.

Use the Catalog Explorer in GeoMedia or Imagine to search, discover and view data from Octave Alto Data Management (formerly ERDAS APOLLO) directly in the map window.

Use GeoMedia as a publishing platform to create high-performance web applications in Octave GeoMedia WebMap (formerly GeoMedia WebMap).

Use GeoMedia for initial setup of Octave GeoMedia Smart Client (formerly GeoMedia Smart Client) projects.



GeoMedia's ribbon interface can be customized to make it easier to define and share specific workflows.

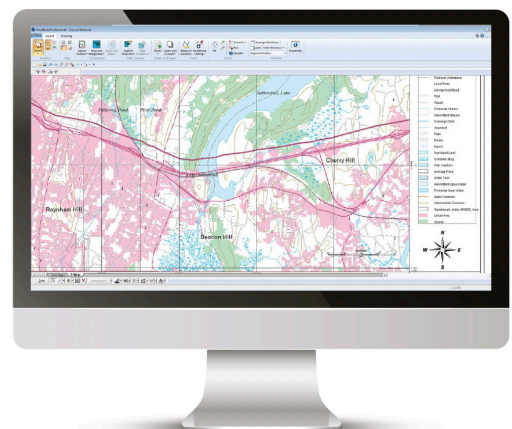
Octave GeoMedia Add-ons

Octave GeoMedia Add-ons (formerly GeoMedia Add-ons) expand the core capabilities of the GeoMedia tiers.

- **GeoMedia Transportation Manager** provides tools to help professionals in municipalities, airports, seaports, departments of transportation (DOTs), rail companies, waterway agencies or pipeline operations efficiently analyze their transportation infrastructure. This includes capabilities for tracking network information and performing specialized analyses. In addition, users can build a linear network model supporting both multilevel linear referencing system (MLRS) and vehicle routing applications.
- **GeoMedia Mapping Manager** enables enhanced cartographic capabilities and GIS mapping automation to produce map series products and construct cartographically accurate map products.
- **GeoMedia 3D** provides additional 3D visualization and analytics to the GeoMedia core products. It augments the 3D capabilities of GeoMedia Essentials, Advantage and Professional. GeoMedia 3D addresses the increasing demand for realistic three-dimensional views of geospatial data. The 3D map window allows a user to visualize, navigate, analyze and interact with 3D data in GeoMedia. The 3D map window blends seamlessly into the GeoMedia interface, permitting complete and simultaneous access to all GeoMedia's standard 2D analysis capabilities.
- **GeoMedia Motion Video Analyst Professional** integrates full motion video into the geospatial environment by dynamically projecting video over GIS data.

- **GeoMedia Image** provides advanced image enhancement, registration, extract and save capabilities.
- **GeoMedia Image Professional** provides a superset of GeoMedia Image, including additional commands and an integrated high-performance electronic light table application.
- **Incident Analyst** is a tool that produces maps showing when and where incidents occur, using temporal and spatial characteristics to reveal trends and help officials allocate resources proactively, saving time and money while improving safety.
- **GeoMedia Advanced Collection** is a set of productivity tools that support data collection and map production by enhancing productivity when collecting and validating vector feature data.
- **GeoMedia GI Toolkit** supports data and map production workflows, including data collection, data integration and management and data dissemination by meeting industry-specific specifications.
- **GeoMedia PDF** allows users to create highly intelligent georeferenced PDF files from map sheets in GeoMedia GeoWorkspace. Users control characteristics such as order of layers, included attributes, CMYK/RGB output color model and number of exported map sheets to PDF files.
- **GeoMedia VPF** provides a production environment for generating digital map products using diverse data sources, including reusable vector data from a foundation feature database. It supports VPF product-generation workflows with comprehensive validation and editing tools, an interface to the Related Attribute Table (RAT) and export options for multiple vector data products.
- **ImageStation Stereo for GeoMedia** enhances the feature collection capabilities of GeoMedia by providing a stereo map window to display imagery and 3D feature data with smooth roam, dynamic zoom and on-the-fly image enhancement.
- **ImageStation DTM for GeoMedia** provides a set of tools to collect and edit terrain data to generate surface files for photogrammetric, mapping and engineering workflows.
- **ImageStation OrthoPro** provides a high-throughput ortho production system that includes ortho project planning, orthorectification, tone balancing, mosaicking, true ortho capability, automatic seam line generation and quality assessment.
- **ImageStation PixelQue** provides tools for checking and enhancing the quality of orthophotos and mosaics. It allows users to systematically review and mark up errors, fix errors and to perform image enhancements on an individual or project basis.

Mapping professionals can easily make beautiful maps with the cartographic-style toolsets available in GeoMedia.





Seamless GIS integration

GeoMedia helps you easily unlock and understand the dynamic stream of real-world geospatial information that flows through your organization. It lets you conduct a variety of analyses, from the very simple to the very sophisticated, on data from disparate sources. It connects directly to the spatially enabled databases already in use by your organization.

GeoMedia allows deep analysis while dynamically updating results. Its flexible tier and add-on structure let you tailor the system to your specific business requirements. GeoMedia empowers you to create intelligent, intuitive maps and unleash the information locked in your data, making it easier to make informed, smarter decisions.

GeoMedia enables you to create intelligent, intuitive maps, unleashing the information locked in your data, making it easier to make informed, smarter decisions.

About Octave

Octave is a leader in enterprise software, turning data into decisive action and intelligence into your edge. Our software solves for and simplifies complexity, from the design and build to operations and protection of people, property and assets – for any scope, at any scale. For decades, we've partnered with customers to sharpen performance, elevate efficiency and amplify results. From factory floors to entire cities, our solutions are tuned to scale up what's possible from day one onward.

©2026 Intergraph Corporation and/or its affiliates. All rights reserved.