



CASE STUDY

Thomas Industrial Network - Octave Forte Reference Data partner



Key facts:

Company: Thomas Industrial Network

Industry: Engineering services

Octave products used: Forte Reference Data
(Intergraph Smart Reference Data)

Key benefits:

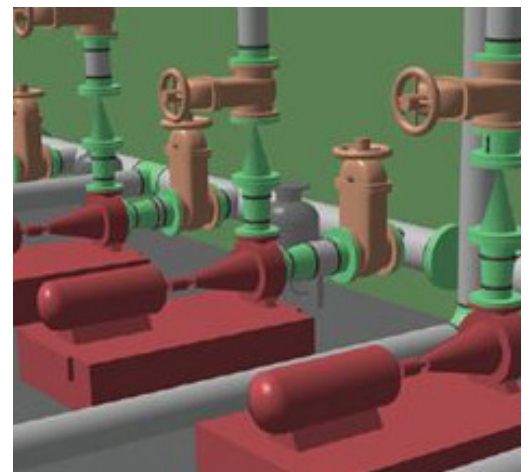
- Detailed product data that is up-to-date and factually verified by the manufacturer
- Technically rich and exact data
- Accurate part number generation
- Every available material attribute

Engineering and construction projects in the process, power and marine industries can be quite complex, and the management of material reference data can be extremely challenging when there are thousands of products from hundreds of suppliers involved. With millions or even billions invested into these projects, it is critical to use high-quality, accurate material reference data in your designs. The integrity of your project can be negatively impacted by limited dimensional descriptions, material photos instead of drawings, or information errors and inconsistencies. To help you visualize your complex designs, Octave's Asset Lifecycle Intelligence division has partnered with Thomas Industrial Network to help achieve your objectives through highly-detailed, supplier-validated data.

Improve the accuracy of your suppliers' material reference data

Accurate and detailed supplier content is critical to delivering a design built with information integrity. Thomas Industrial Network has an extensive relationship with thousands of suppliers, and all material

data provided by its suppliers is verified and approved, so the data is exact and updated on a continuous basis. The data provided includes numerous product characteristics such as item and part numbers, weight, material, dimension, capacity, tolerance, length, speed, volume, radius type, thickness, outside diameter, size, output/power, bend angle and many more. The level and accuracy of data provided by Thomas Industrial Network is unmatched by any other sources.

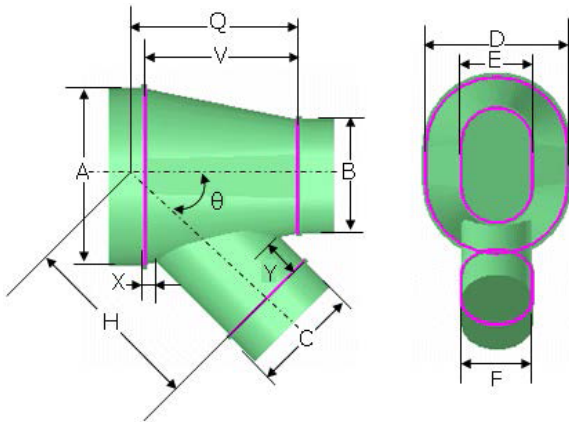


Ready to use in the Forte 3D design and modeling environment

Provide accurate data to the Octave Forte 3D platform

Octave’s partnership with Thomas Industrial Network reduces the risk of inaccurate data by providing you with product data validated by the supplier and formatted for use within Forte Reference Data, which is then integrated and ready to use in the Forte 3D design and modeling system. With increased accuracy in your suppliers’ material reference data, this will positively impact your process through:

- Increased productivity to project completion
- Improved work planning
- Effective and efficient supplier communication

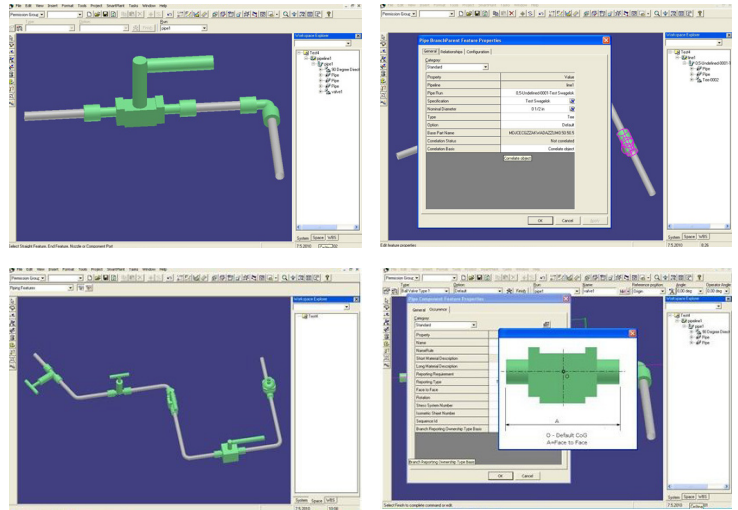


Thomas Industrial Network provides detailed product data that is up-to-date and factually verified by the manufacturer.

Benefits

Designing with precise and detailed data for all materials and geometries is critical to your success. The benefits of Octave’s partnership with Thomas Industrial Network include:

- Detailed product data that is up-to-date and factually verified by the manufacturer
- Technically rich and exact data
- Accurate part number generation
- Every available material attribute



Get access to high-quality, manufacturer-verified data within the Octave system.

About Octave

Octave is a leader in enterprise software, turning data into decisive action and intelligence into your edge. Our software solves for and simplifies complexity, from the design and build to operations and protection of people, property and assets – for any scope, at any scale. For decades, we’ve partnered with customers to sharpen performance, elevate efficiency and amplify results. From factory floors to entire cities, our solutions are tuned to scale up what’s possible from day one onward.

©2026 Intergraph Corporation and/or its affiliates. All rights reserved.