



# Octave OnCall Connect CAD Share



## Extend real-time operational intelligence beyond the dispatch center

Shared awareness and coordinated action are the hallmarks of successful incident management and resolution. But too often, limited visibility and operational silos negatively impact incident response.

Octave OnCall Connect CAD Share securely extends live emergency response intelligence beyond the 911 dispatch floor, providing command staff, investigators and regional partners with immediate, real-time visibility into incidents, unit activity and operational status.

### **Absolute visibility. Total integrity.**

OnCall Connect CAD Share is built on Octave OnCall Connect (formerly HxGN Connect), a cloud-native, real-time collaboration Platform as a Service (PaaS) solution that enables agencies to securely share data, improve situational awareness and coordinate response across jurisdictions.

By transforming computer-aided dispatch (CAD) data into a shared operational intelligence platform, OnCall Connect CAD Share enables agencies to move from

reactive monitoring to proactive decision-making. Secure, read-only access empowers agencies to safely expand visibility across their organizations without introducing risk to dispatcher workflows or operational data.

## Benefits

OnCall Connect CAD Share provides secure operational transparency across your agency and region, enabling leadership and partner agencies to stay informed, coordinate response efforts and make decisions faster.

- **Real-time operational awareness:** Monitor active incidents, unit statuses and resource deployment as events unfold, allowing command staff and operational leaders to gain immediate insights into field activity and operational coverage
- **Map-based situational intelligence:** Visualize incidents and resources through a live geospatial interface for quick identification of incident clusters, response and operational priorities
- **Secure read-only architecture:** Protect the integrity of your live CAD environment – users observe operations without the ability to modify incident data or unit status

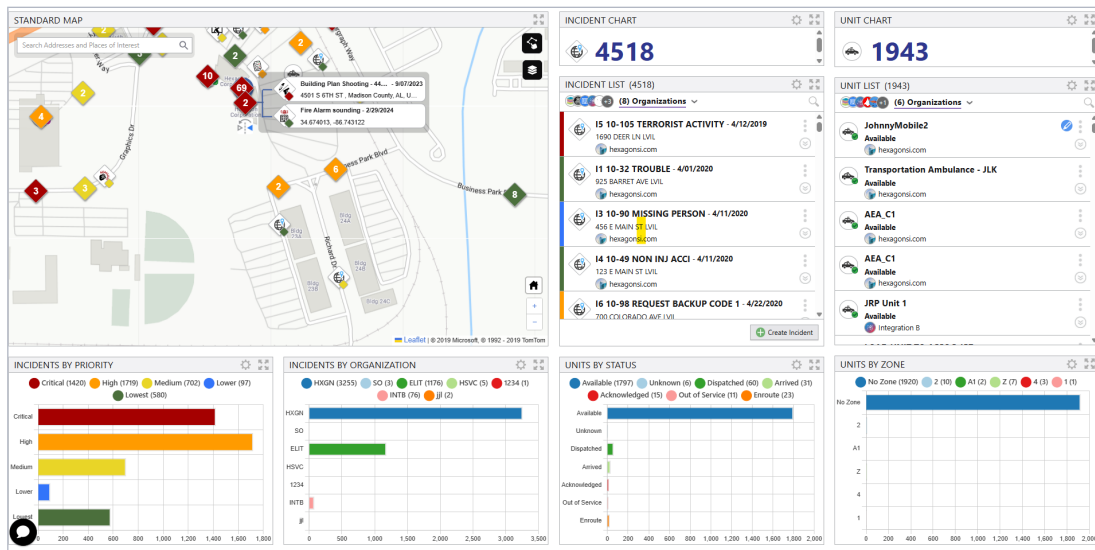
- **Common operating picture:** Extend CAD visibility to command staff, investigators, emergency operations centers (EOCs) and regional partners to create a shared view of active incidents and resources

## User groups

- **Command staff:** Maintain real-time visibility into incidents, unit activity and geographic coverage to support faster and more informed operational decisions

- **Public information officers:** Safely verify incident information for timely and accurate public communications
- **Investigators and operational support teams:** Access real-time incident information for full awareness

More information at [octave.com](https://octave.com)



Real-time situational awareness dashboard displaying active incidents, unit availability and geographic distribution for coordinated emergency response

## About Octave

Octave is a leader in enterprise software, turning data into decisive action and intelligence into your edge. Our software solves for and simplifies complexity, from the design and build to operations and protection of people, property and assets – for any scope, at any scale. For decades, we’ve partnered with customers to sharpen performance, elevate efficiency and amplify results. From factory floors to entire cities, our solutions are tuned to scale up what’s possible from day one onward.

©2026 Intergraph Corporation and/or its affiliates. All rights reserved.