



SOLUTION SHEET

AI-powered project performance with Octave Sequence Enterprise

Project data isn't the problem. Accessing and acting on it is.

In most organizations, critical project information is spread across systems, reports and documents. Even when the data exists, it takes time to find it, interpret it and translate it into action.

That delay creates risk.

Sequence Enterprise (formerly EcoSys) addresses this with Octave Aria (formerly HxGN Alix), Octave's embedded AI technology, bringing intelligence directly into the flow of work so users can move from question to insight to action faster. Not as a separate tool, but as part of how project performance is managed.

AI embedded where decisions happen

Sequence Enterprise 10 enhances its AI capabilities to make interaction with project data more direct and actionable.

Users can ask questions in natural language and receive answers grounded in their project data, without navigating through multiple screens or reports. But more importantly, the system now connects those answers to action.

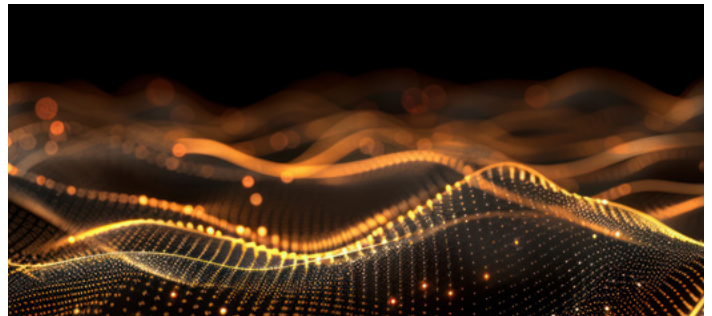
With this release, users are guided directly to the source of the answer within the platform. Instead of stopping at insight, AI helps users move immediately to the relevant module, dataset or workflow.

The result is a shorter path from question to execution.

From information retrieval to guided execution

AI in Sequence Enterprise is designed to reduce friction, not replace expertise.

In addition to surfacing insights, Sequence Enterprise is evolving to support how work gets done. Enhancements in and following the 10 release expand AI's role from answering questions to guiding users through tasks.



Users can:

- Navigate directly to relevant areas of the system based on AI responses
- Receive in-context guidance on how to complete processes
- Access training materials and documentation through the AI assistant
- Leverage AI-driven predictive forecasting to anticipate cost, schedule, and risk outcomes based on real-time and historical project data

This reduces reliance on external resources, shortens onboarding time and improves consistency across teams.

AI built on project context, not generic data

The value of AI depends on the quality and context of the data behind it.

Sequence Enterprise AI operates within a governed environment, using project-specific data across cost, schedule, risk, contracts and documents. This allows it to deliver responses that reflect the actual state of the project, not generic assumptions.

This contextual foundation is critical. It transforms AI from a general assistant into a project-aware analyst that supports real decisions.

Business impact

Embedding AI into Sequence Enterprise delivers measurable improvements across project performance:

- Faster access to insight through natural language interaction with project data
- Reduced time to action by linking answers directly to workflows and system navigation
- Improved productivity by minimizing manual search, reporting and reconciliation
- Stronger decision-making based on contextual, project-specific intelligence
- Scalable efficiency through emerging automation and AI-driven workflows

Expanding into intelligent automation

Beyond assisting users, Sequence Enterprise is evolving toward AI-driven execution.

Future capabilities on the roadmap introduce more advanced functionality, including:

- **Custom document interaction:** AI that works with user-defined documents and generates outputs such as summaries or visualizations
- **Suggested and remembered prompts:** Helping users interact more efficiently over time based on usage patterns
- **Scheduled AI agents:** Prompts that run automatically on a defined cadence, delivering insights without manual input

These capabilities represent a shift toward "digital labor," where AI supports not just analysis, but ongoing execution across workflows.

Designed for enterprise governance

AI capabilities are embedded within Sequence Enterprise's existing security and governance framework.

User access, permissions and data visibility remain fully controlled. AI responses are aligned to what each user is authorized to see and do, ensuring that speed and accessibility do not compromise compliance.

A foundation for proactive project performance

Sequence Enterprise AI is part of a broader shift from reactive reporting to proactive intelligence.

By embedding AI across the platform, organizations can move beyond static dashboards and manual analysis toward continuously available, decision-ready insight.

The result is a more responsive, informed and efficient approach to managing complex projects.

What is Sequence Enterprise?

Sequence Enterprise is Octave's enterprise project performance platform, unifying project portfolio management, project controls and project management in a single, connected system.

With embedded AI, it brings together data, processes and intelligence, enabling organizations to move faster, act earlier and deliver with greater confidence.

Explore how **Sequence Enterprise** can support your organization.

[Learn more](#)

[Contact us](#)

About Octave

Octave is a leader in enterprise software, turning data into decisive action and intelligence into your edge. Our software solves for and simplifies complexity, from the design and build to operations and protection of people, property, and assets— for any scope, at any scale. For decades, we've partnered with customers to sharpen performance, elevate efficiency, and amplify results. From factory floors to entire cities, our solutions are tuned to scale up what's possible from day one onward.

©2026 Intergraph Corporation and/or its affiliates. All rights reserved.