



PRODUCT SHEET

Octave Aspect Tank

Comprehensive design, analysis and evaluation for oil storage tanks



Capabilities:

- Steel oil storage tank design
- Analysis output and reports
- Complete unit flexibility
- API standards 579, 620, 650 and 653
- API 2000, section 4.3 for venting
- EN 14015 standard
- Allowable fluid heights
- Nozzle loads and flexibilities
- Carbon and stainless steel
- Extensive material databases
- Wind loads and anchorage
- Seismic analysis
- Settlement loads
- Shell course thickness
- Cone, dome and umbrella
- Roof thicknesses
- 3D interactive graphics
- Drawing view

Data collection

The menu-driven interface of Aspect Tank (formerly TANK) enables the quick definition of input and functions for the accurate analysis of oil storage tanks to American Petroleum Institute (API) standards.

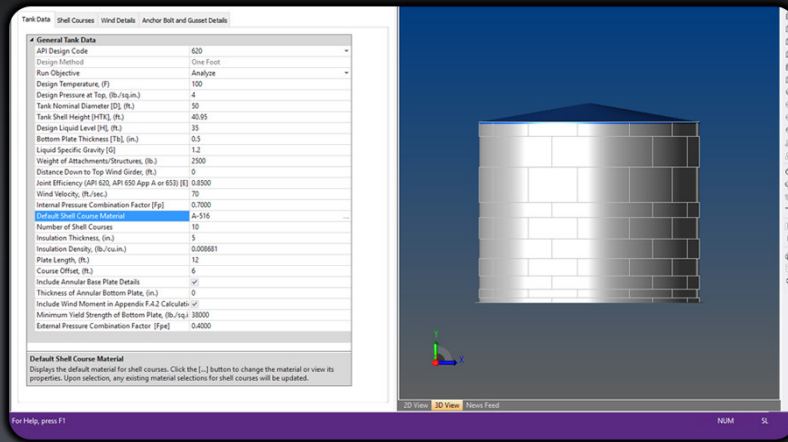
Increased flexibility is provided by allowing you to select any unit combination for analysis or to produce reports. Unit files are completely user-definable, so engineers are not bound by program default settings. Even existing jobs can be converted to any existing unit format.

User interface

The user interface in Aspect Tank presents only what is needed at each point of information gathering. You are not burdened with out-of-sequence requirements for information required for analysis. You are asked only for what is needed when it is needed.

Analysis options and codes

Aspect Tank performs calculations in accordance with the latest API Standards 579, 620, 650 and 653. Analysis can also take into account wind, seismic and settlement conditions, plus calculate air venting requirements to API 2000 Section 4.3.



Aspect Tank's intuitive interface employs user-defined materials and units and produces clear and accurate analysis reports.

Advanced analysis and reporting

After completing an analysis, users can view the results in a tabular report or as a graphic diagram with associated data. For convenience in verifying the results, the output reports reference code sections used where applicable. Quickly send analysis results to output reports or export the file format of your choice (Word, PDF, etc.).

Materials and codes

Aspect Tank includes many databases integral to the package, which makes it easy to select standard data for accurate analysis. A number of U.S. and international structural steel databases are provided. API materials are available.

Quick, context-sensitive help

Aspect Tank's context-sensitive help provides instant technical assistance at the point of input. Pertinent information is presented relative to each selected item, including code references and technical advice. Built-in search makes for rapid navigation.

Graphics

Aspect Tank graphical representation of analysis models helps ensure confidence in the input and results. Within Aspect Tank, users can view and manipulate analysis models with complete ease.

Equations and substitutions

The software provides equations and substitutions, making it effortless for users to verify the accuracy of the calculations presented in the reports.

Technical specifications

- Microsoft® Windows®-compatible

Application areas

Aspect Tank is frequently used in chemical, equipment, petrochemical, piping, power, process, plant design and water treatment projects.

About Octave

Octave is a leader in enterprise software, turning data into decisive action and intelligence into your edge. Our software solves for and simplifies complexity, from the design and build to operations and protection of people, property, and assets— for any scope, at any scale. For decades, we've partnered with customers to sharpen performance, elevate efficiency, and amplify results. From factory floors to entire cities, our solutions are tuned to scale up what's possible from day one onward.

©2026 Intergraph Corporation and/or its affiliates. All rights reserved.