



# Octave InConcert Core Connector for Leica TruView

**The idiom “a picture is worth a thousand words” certainly applies to asset information.** Tasks like locating equipment, identifying isolation points, determining inspection locations and evaluating scaffolding needs become far simpler and more accurate when photorealistic laser scan images are available. These images eliminate ambiguity, minimize risks and reduce errors in day-to-day facility operations. The value of laser scans increases significantly when they’re linked to asset information via interactive hotspots. **This is the role of Octave InConcert Core Connector for Leica TruView (formerly HxGN SDx Connector for Leica TruView).**

The connector consists of a web-based, zero-footprint viewing component and a set of services that connect both of the Leica Geosystems products:

- **Leica TruView Enterprise** (self-hosted web solution for any browser, any platform)
- **Leica TruView Cloud** (Leica Geosystems-hosted software service for any browser, any platform)

With Leica TruView, it’s easy to take full advantage of laser scans in your facility. It allows you to share your data sets with field workers and remote offices with real-time functionality to take measurements, manage, connect and view the GeoTag hotspots, making sure your data (once collected) stays correct.

Rather than describing a pump’s location and issue and trying to figure out tag information, use the combined power of laser scans, GeoTags and InConcert Core to clearly communicate with visual context what could have otherwise been a lengthy, confusing and potentially error-prone conversation or email chain. Online access in the field allows frontline workers to execute tasks with confidence as the correct locations have been identified for isolation and inspection.

Scans from terrestrial, mobile, handheld and aerial scanning devices from the Leica Geosystems product line and third-party sensors are supported. GeoTags published from Cyclone as HotSpots are presented in associated spatial location and in a searchable table with sorting filters and click-through navigation.

Leica TruView connects with InConcert Core, a modular, cloud-based asset lifecycle information management solution that optimizes efficiency, improves profitability and ensures safety throughout the facility lifecycle. Compliant with the Capital Facilities Information Handover Specification, it creates a trustworthy, data-centric digital twin that is intelligently connected to your work processes and interoperable with engineering design tools and other operations systems. This ensures consistent, complete and correct engineering master data. It also provides facility operators a vastly improved way of working.

The greater the interconnectedness of components within your **digital twin**, the higher your confidence in your data will be, leading to enhanced efficiency and safety.

# Frequently asked questions

## What products does this connector work with?

InConcert Core, SmartPlant® Enterprise for Owner Operators (SPO), and SmartPlant Foundation (SPF).

## What if I don't use Leica hardware or Leica files?

Leica TruView is sensor-agnostic and can read data from the Leica Geosystems product line and a wide range of third-party sensors.

## What's the difference between Leica TruView Enterprise and Leica TruView Cloud?

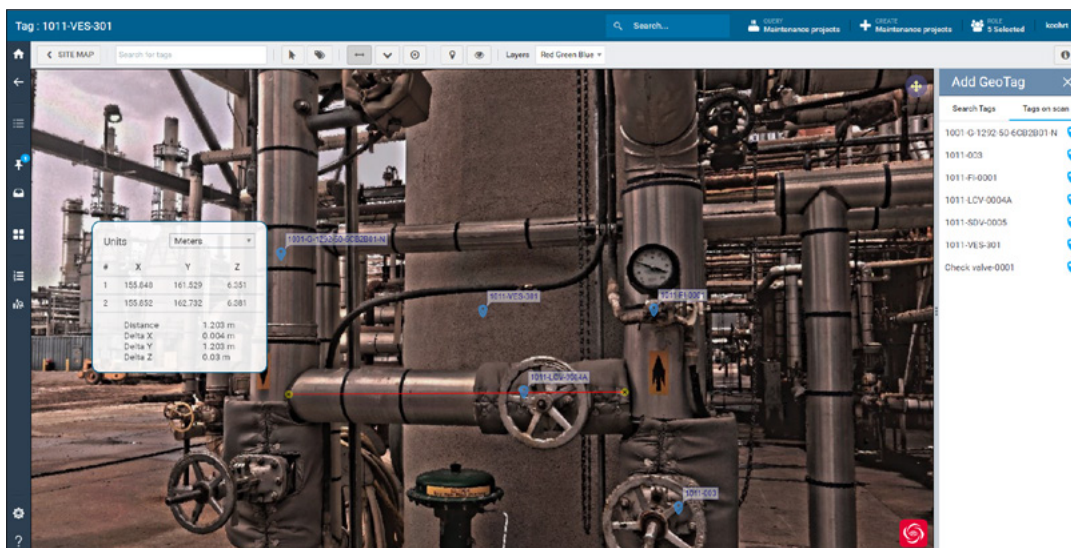
The capabilities are the same, however Leica TruView Enterprise is an on-premise solution while Leica TruView Cloud is delivered via cloud.

## Are Leica's TruView and InConcert Connector for Leica TruView available as part of InConcert Core?

No, they must be purchased separately. Octave is a reseller for Leica TruView Enterprise/Cloud. InConcert Core Connector for Leica TruView is a prerequisite to use Leica TruView with InConcert Core, SPO and SPF.

## Do I need to create a 3D model to take advantage of Leica TruView (as-built) and asset management integration?

No, GeoTags can be created field or in the office to digitally connect as-is conditions with asset intelligence through smart, semi-automated procedures.



## About Octave

Octave is a leader in enterprise software, turning data into decisive action and intelligence into your edge. Our software solves for and simplifies complexity, from the design and build to operations and protection of people, property, and assets— for any scope, at any scale. For decades, we've partnered with customers to sharpen performance, elevate efficiency, and amplify results. From factory floors to entire cities, our solutions are tuned to scale up what's possible from day one onward.

©2026 Intergraph Corporation and/or its affiliates. All rights reserved.